

# International Student Arrival Guide

Edinburgh Napier  
UNIVERSITY



[napier.ac.uk](http://napier.ac.uk)



# Contents

<b>Checklist</b>	<b>4</b>
<b>Before you arrive</b>	<b>5</b>
Get your visa	5
Health and wellbeing	6
Find your accommodation	7
Arrange your travel	8
Complete your registration	9
Get ready to travel	10
<b>In your first few days</b>	<b>11</b>
Arrival	11
Immigration	12
Get settled in	12
<b>In your first week</b>	<b>13</b>
Finance	13
Get started at the University	13
Practicalities	14
<b>Help and support</b>	<b>15</b>
<b>Map</b>	<b>16</b>





# Welcome

We are delighted that you have chosen to study at Edinburgh Napier University.

Studying abroad is exciting but it can also be daunting. We have prepared this guide with your needs in mind, answering practical questions about living and studying at Edinburgh Napier.

The Visa and International Support team is here to support your transition to Edinburgh and the University and to provide you with guidance and support during your studies here. Our trained immigration advisors are here to help you with your visa and immigration questions.

If you have any questions, please don't hesitate to contact us. If you would prefer to speak to us face to face when you arrive, email to make an appointment – you can find details on our website below.

We wish you a safe journey and we look forward to meeting you soon.

## Visa and International Support team

[napier.ac.uk/visas-immigration](https://napier.ac.uk/visas-immigration)



internationalsupport@napier.ac.uk



+44 (0)131 455 2272



# Checklist

## Before you arrive

### 1) Finalise your offer

- ☐ Satisfy the conditions of your offer
- ☐ Accept your offer
- ☐ Pay your tuition fee deposit. Please check your offer email for the amount you need to pay.
- ☐ Receive your Confirmation of Acceptance of Studies (CAS) (if required)

### 2) Get your visa

- ☐ Make sure you have a valid passport
- ☐ Upload your entry clearance, visa decision letter and sharecode to CAS shield (if required)
- ☐ Apply for your visa as soon as you receive your CAS
- ☐ Have medical examinations and vaccinations (if required)
- ☐ Check if you are required to show a Tuberculosis screening certificate
- ☐ Check if you are required to pay the immigration health surcharge when applying for student visa
- ☐ If you have applied for a Student visa, do not travel to the UK until your student visa has been approved

### 3) Find accommodation

- ☐ Search and apply for accommodation as soon as possible (University or private)
- ☐ Pay your accommodation deposit

### 4) Arrange your travel

- ☐ Arrange travel insurance
- ☐ Book your flights/travel

### 5) Complete your registration

- ☐ Read the preparation emails you receive from Edinburgh Napier University. These will start from December 2025. If you have an unconditional offer. Make sure to check your junk mail folders.
- ☐ Complete your online registration and set up a fee payment plan if you wish. You can pay your tuition fees in installments
- ☐ Enrol for the Password Manager Service
- ☐ Complete the Introduction to Computing and Library Services
- ☐ Check the start date and induction schedule for your course and the online International Pre-Arrival events schedule

### 6) Get ready to travel

- ☐ Buy currency
- ☐ Pack your suitcase
- ☐ Pack your essential documents in your hand luggage
- ☐ Pack prescription medication
- ☐ Provide journey and contact details before you travel to the UK

## In your first few days

### 1) Arrival

- ☐ Plan your journey for when you arrive in Edinburgh
- ☐ Collect your accommodation keys
- ☐ Tell your family/friends you have arrived safely
- ☐ Find out how to get around the city
- ☐ Get your passport stamped when you arrive in the UK (if applicable) and keep copies of your boarding pass

### 2) Immigration

- ☐ Apply for Electronic Travel Authorisation (ETA) if required.
- ☐ If you did not apply for a Student Route visa as your course is less than 6 months, upload your boarding pass as part of the registration task

### 3) Get settled in

- ☐ Take part in welcome events
- ☐ Get familiar with the transport system to get to Campus

## In your first week

### 1) Finance

- ☐ Arrange payment of your tuition fees
- ☐ Pay for your University accommodation fees
- ☐ Open a bank account

### 2) Get started at the University

- ☐ Take part in Welcome Week
- ☐ Attend your school academic induction
- ☐ Find out about student support in the University

### 3) Practicalities

- ☐ Find out about emergency services
- ☐ Register for healthcare
- ☐ Arrange contents insurance
- ☐ Get a TV licence (if applicable)
- ☐ Buy a local mobile/UK SIM card
- ☐ Find out about food shops



# Before you arrive

## Get your visa

**Visit our visas and immigration website for more information.**

[napier.ac.uk/visas-immigration](http://napier.ac.uk/visas-immigration)

### Find out if you need a visa

A visa (or entry clearance) gives you permission to enter the United Kingdom (UK).

To check if you need a UK visa, visit the government website.

[gov.uk/check-uk-visa](http://gov.uk/check-uk-visa)

### Different visa types

Depending on the length of your course and plans for your stay, you may need to apply for the Student Route Visa, or a Standard Visitor visa depending on duration of course. Find out about your options on our website.

[napier.ac.uk/visas-immigration](http://napier.ac.uk/visas-immigration)

### Apply for your visa

Visit the visas and immigration section on our website for information and guidance on applying for your visa.

Our dedicated Visa and International Support team are on hand to help you through the process.

### Local representatives

Contact one of our local representatives who can help you through the visa application process. A full list of contacts is available on our website.

[napier.ac.uk/local-representatives](http://napier.ac.uk/local-representatives)

### CAS Shield

If you have received a CAS for your student visa, you will have been using CAS Shield to communicate with the University. You must also upload your eVisa sharecode and your boarding pass/evidence of date of entry to the UK. Please continue to reply to messages from CAS Shield and be sure to update your travel arrangements.

### Check your visa details

When you receive your entry clearance and eVisa (if applicable), check all the details are correct. Please ensure that you travel to the UK with the passport you used during your application process. Check the following details on your entry clearance:

- Start and end date
- Working conditions
- Sponsor licence number: Edinburgh Napier University is **MK65M10G8**

Check the following details on your eVisa:

- Name
- Date of birth
- Nationality
- Student Status
- Visa start and end dates

If you spot any errors, get in touch with the Visa and International Support team by emailing [visacompliance@napier.ac.uk](mailto:visacompliance@napier.ac.uk)

### Visa and International Support team

[napier.ac.uk/visas-immigration](http://napier.ac.uk/visas-immigration)

✉ [internationalsupport@napier.ac.uk](mailto:internationalsupport@napier.ac.uk)

☎ +44 (0) 131 455 2272

### Previous visas

We advise you not to enter the United Kingdom (UK) with a Student Route Visa associated with a course you have already completed, even if the visa is still valid. You may be refused entry to the UK, if the Border Force Officer is not satisfied that you have met the immigration rules for entry as a Student Route student. For further advice, please contact the Visa and International Support team.



# Health and wellbeing

## Vaccines

We advise that you be immunised against Meningitis (MenACWY vaccine) before beginning your studies. The vaccine is available in the UK to new university entrants up to 25 years of age. Register with a doctor when you arrive and request the vaccination, if you have not done so before you arrive.

We also advise that you are vaccinated for Measles, Mumps and Rubella (MMR).

Find out more about student health and wellbeing on myNapier.

We would also advise having updated COVID-19 vaccinations.

**[my.napier.ac.uk/wellbeing-support-and-inclusion](https://my.napier.ac.uk/wellbeing-support-and-inclusion)**

## Medical check

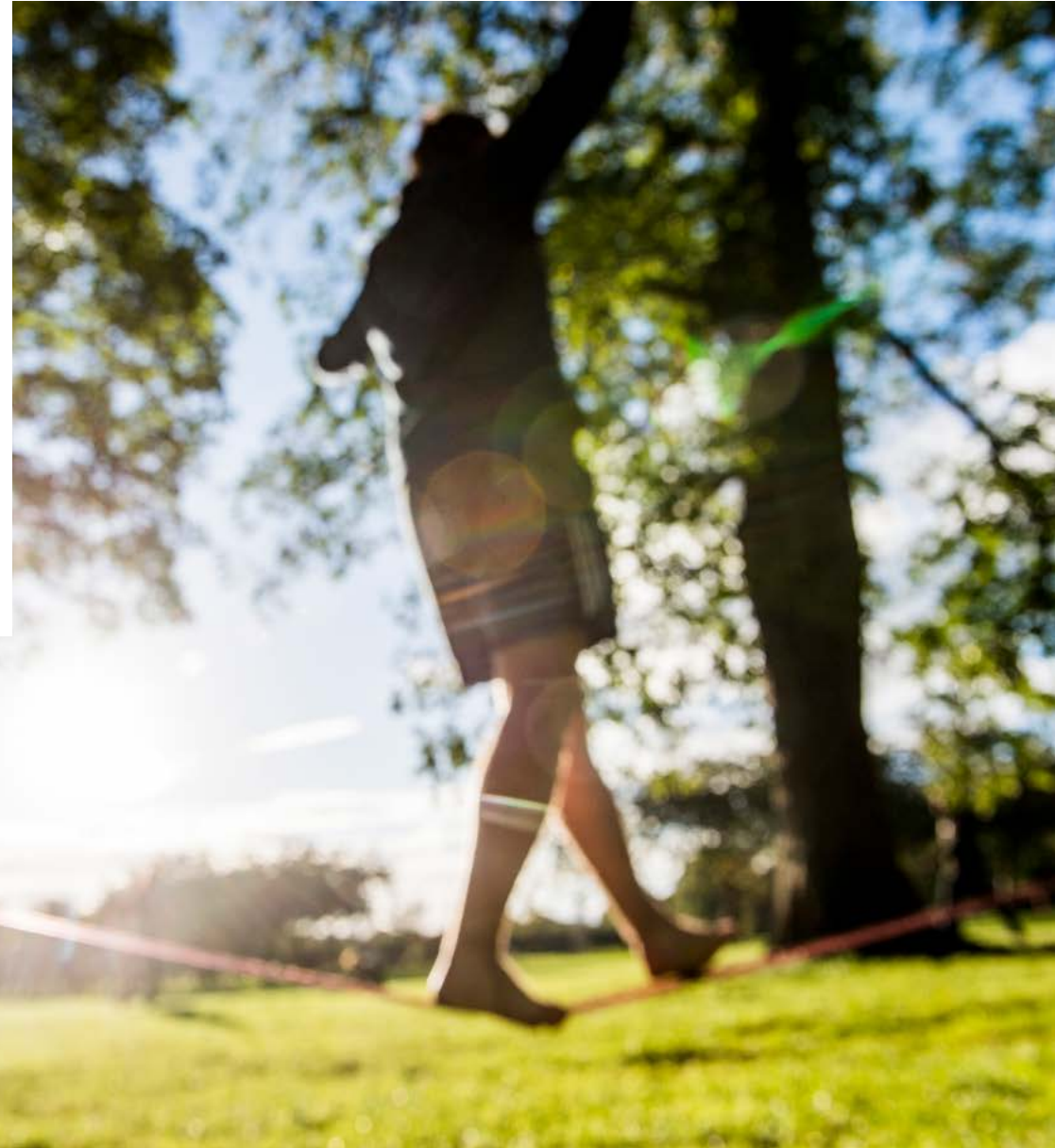
If you are coming to the UK for more than six months and are a resident in a listed country, you will need a medical certificate from an approved clinic confirming that you are clear of Tuberculosis (TB). Visit the UK Government website to find out if you need a medical check. Be sure to carry your medical certificate in your hand luggage when you travel to the UK.

**[gov.uk/tb-test-visa](https://gov.uk/tb-test-visa)**

## Immigration health surcharge

Applications for visas that are more than six months long include an 'immigration health surcharge', which allows you to access most free health services under the National Health Service (NHS) in the UK. IHS now charge £776.00 per year of visa granted, not the duration of your course. The Student Route visa application forms will calculate the amount you need to pay and will request payment before you can complete the application. You can use the immigration health surcharge tool on the UK government website to check how much you will have to pay before you start the application process.

**[gov.uk/healthcare-immigration-application](https://gov.uk/healthcare-immigration-application)**





# Find your accommodation

Edinburgh has a whole host of different accommodation options available to you. There's plenty to think about and it's important you plan ahead, particularly as this may be the first time you've lived away from home.

## University accommodation

The University has 1500 quiet, safe and comfortable rooms over three sites in and around the city centre and many include private bathrooms.

All three locations have 24-hour security, staff available during office hours and a student 'Resident Assistant' who lives on-site. Each location offers central laundry facilities and a TV license at an additional cost.

Rent costs start from £128.59 per week. Visit our website for further information about pricing.

## Apply

You can apply for student accommodation online as soon as you have an unconditional offer of study, and have accepted it.

[napier.ac.uk/accommodation](http://napier.ac.uk/accommodation)

## Pay your accommodation deposit

You will be asked to make a £500 advance rent payment when you submit your application form.

## Private accommodation

Many students choose to live in privately rented accommodation. There is a lot to choose from in Edinburgh, but demand is high too. Our Accommodation team can help you begin your search and make sure you have all the information you need.

[napier.ac.uk/study-with-us/accommodation/private-accommodation](http://napier.ac.uk/study-with-us/accommodation/private-accommodation)

Always check that your private landlord is registered with the local council before signing a letting agreement.

[landlordregistrationscotland.gov.uk](http://landlordregistrationscotland.gov.uk)

We expect all students to live within a commutable distance from their campus. When you arrive to the UK, please update your address as quickly as possible.

## Student Accommodation Office

[napier.ac.uk/accommodation](http://napier.ac.uk/accommodation)

✉ [accommodation@napier.ac.uk](mailto:accommodation@napier.ac.uk)

☎ +44 (0)131 455 3482





# Arrange your travel

## Arrange travel insurance

Before you travel, you should purchase travel insurance to cover your journey to the UK. Most travel insurance will cover any problems such as delays, emergency medical treatment and lost or stolen luggage.

Money Saving Expert is a good resource to get you started.

[moneysavingexpert.com](https://moneysavingexpert.com)

## Book your flights or travel

Once you have arranged your fees, visa and accommodation, you will be ready to book your travel to the UK.

Please arrive before Monday, 19 January 2026 so that you can take part in the Welcome Week activities and academic induction.

## Last date for arrival

The last date for arrival is Friday, 6 February 2026. For information on travelling to Edinburgh, visit our 'Getting here' website.

[napier.ac.uk/getting-here](https://napier.ac.uk/getting-here)

## Arriving via the Republic of Ireland

If you travel to the UK via the Republic of Ireland, you must be aware that there is no immigration control on arrival in the UK, which can cause a problem if you are on a short course and did not apply for a visa before travelling. Find out more on our website.

[napier.ac.uk/study-with-us/international-students/visas-and-immigration](https://napier.ac.uk/study-with-us/international-students/visas-and-immigration)

## Earliest arrival

You can only travel after your visa start date. The earliest a visa will be granted will be a month before your course start date. Depending on your nationality, your entry clearance will be stamped on your entry into the UK. You need to keep evidence of the date you entered the UK. This will either be a stamp in your passport or your boarding pass. You need to upload the date you arrived to CAS Shield.

**Find out what to pack on page 10.**

**For transport from the airport, see page 11.**





## Complete your registration

Once you have accepted an unconditional offer, you will receive a series of emails from the University giving you access to information technology (IT) services and online registration.

### Step 1

You will receive a welcome email with details on your induction session. This is your first appointment with your school and explains when and where you need to be on your first day.

A second email will give you more information on the registration process. This email will be sent from December 2025.

### Step 2

Create your Edinburgh Napier password by following the link in the third email. This will enable your access to all IT services.

### Step 3

The final registration email will give you access to complete the final steps of your registration.

- Complete your online registration
- Enrol for the Password Manager Service
- Complete the Introduction to Computing and Library Services.

### What happens next?

The online registration task will advise if you need to upload your visa information and/or contact our Finance team to confirm your payment plan or to pay your fees in full if you have not done so already. All non British passport holders are required to provide evidence of their right to study in the UK before registration is complete. Once we have this evidence and your tuition fee payments have been made (or appropriate plan set up) your registration will be complete. If you are entering on a Student Route visa, you will need to upload to CAS Shield a copy of your visa decision letter, confirmation of the date you entered the UK i.e your stamped entry clearance or a boarding pass and your sharecode information. You will then get full access to module information online (via Moodle) when you have completed the checks. You will also get access to your student email account.

### Visit our registration FAQs for more guidance

Visit our registration page for more guidance:

[my.napier.ac.uk/new-students/registration](https://my.napier.ac.uk/new-students/registration)

✉ [registrationhelpdesk@napier.ac.uk](mailto:registrationhelpdesk@napier.ac.uk)



# Get ready to travel

## Currency

The currency in the UK is the pound sterling (GBP).

## Pack your suitcase

Deciding what to bring with you can be a difficult decision. We suggest:

- Light clothing that you can layer
- Some warmer clothing, for example jumpers
- A warm coat and a lighter coat
- Boots and shoes for wet weather
- Home comforts or mementos
- Prescription medication
- Adapters for electrical items

**You do not need to buy everything you need before you leave for the UK, you can buy many essentials once you arrive from local shops. Remember to budget for these items:**

- Stationery
- Household items, for example bedding, plates and cutlery
- Additional clothing
- Food

**Visit our section on shopping on page 14.**

## Important information about travel

UKVI are now replacing BRPs with eVisas. All students who have been granted a Student visa should set up an eVisa.

Once the eVisa is created, you need to link your current passport to your eVisa to avoid problems entering the UK. You must ensure you carry this evidence with you as you pass through the UK border. You must carry your passport (must be valid at the time when you travel to the UK).

- You should carry a copy of the decision letter or email that was sent to you from the Home Office. The letter/email should confirm when your visa was granted and the visa expiry date
- You should generate a share code before you travel and also print a copy of your status or have it saved on your device to show Border Force officers if needed.

## Pack your essential documents

You should carry all your important documents with you in your hand luggage. You will need to bring the following:

- Your passport - make sure it's the passport mentioned in your UKVI account.
- Visa/UK immigration permission
- Small amount of money
- Offer from Edinburgh Napier University
- Confirmation of Acceptance for Studies (CAS) number (if applicable)

- Documents used to support your offer as mentioned in your CAS
- Proof of fees paid (if paid in advance)
- Sponsorship letter (if applicable)
- Evidence of finances (for example bank statements)
- Proof of your UK address
- Your medical/tuberculosis certificate (if applicable)

These documents should be easy to access in case you are asked to show them to a Border Force Officer at passport control. Check with your airline before departure about the size and weight of your hand luggage and what items you can/cannot pack.

## Scottish weather!

The climate in Edinburgh is mild. We don't experience extremes in temperature throughout the year. In the summer months (June to August), the average temperature is 15 degrees Celsius (59 Fahrenheit). In winter (December to February) the average temperature is around 4 degrees Celsius (39 Fahrenheit). Factor this in to your packing.

## Electrical items

The electrical voltage in the UK is 240volts/50 Hertz. If you are planning to bring electrical items from your home country, you need to make sure you will be able to use them safely on that voltage or use an adapter.





# In your first few days

## Arrival

### Arrive at Edinburgh International Airport

Edinburgh International Airport is open seven days a week and receives regular flights from international destinations and other UK airports.

It is about 12 kilometres from the city centre and the 30-minute journey can be easily made using the frequent airport bus or tram services, or by taxi. You'll find lots more information on the airport website.

[edinburghairport.com/transport-links](http://edinburghairport.com/transport-links)

### Evidence of your arrival

Depending on your nationality or type of visa you have, your passport may or may not be stamped on your entry into the UK. It is important that if your passport is not stamped that you still keep evidence of the date you entered the UK. This will either be your boarding pass or your flight details. You need to upload the evidence of your arrival date to CAS Shield or if you don't have a student visa, you need to send it to us during your registration.

### Arrive by bus or rail

The rail and bus stations are located in the city centre. You can easily get to your accommodation from these by bus, tram or taxi.

## Accommodation

The Student Accommodation team are looking forward to welcoming you at your hall of residence, if staying at University accommodation.

### Tell your family/friends you have arrived

Your family and friends will want to know that you have arrived safe and well. Call them as soon as you can! There are public payphones located in the arrivals hall at Edinburgh Airport.

### Find out how to get around the city

Edinburgh is a compact city and getting around is easy. All our campuses and student accommodation are well connected by public transport or you may find that you prefer to walk or cycle.

### Student Accommodation Office

[napier.ac.uk/accommodation](http://napier.ac.uk/accommodation)

✉ [accommodation@napier.ac.uk](mailto:accommodation@napier.ac.uk)

☎ +44 (0)131 455 3482

## Bus

Lothian Buses provide an excellent bus service and serve all our campuses and accommodation. If you plan to use buses regularly, we recommend you get the student Ridacard (weekly, monthly or yearly). It will give you access to all regular buses, Airlink to the airport, night buses and all trams.

[lothianbuses.co.uk](http://lothianbuses.co.uk)

## Trams

Edinburgh Trams run frequently between the city centre and the airport, and past our Sighthill campus. The trams work in partnership with Lothian Buses so your ticket will serve both trams and Lothian Buses.

[edinburghtrams.com](http://edinburghtrams.com)

## Trains

The main train stations are Edinburgh Waverley and Haymarket. From these, you can travel across the rest of the UK and on to Europe.

[networkrail.co.uk](http://networkrail.co.uk)

## Walking and cycling

Edinburgh has an extensive network of walking and cycle paths. All three campuses are easily accessible from them. Walking or cycling is a very affordable and environmentally friendly way to travel around the city. The University has secure cycle lockers on all campuses that you can access with your student card.

[edinburgh.gov.uk/info/20087/cycling\\_and\\_walking](http://edinburgh.gov.uk/info/20087/cycling_and_walking)

## Driving

If you choose to drive in the UK, you must hold a valid licence. If you hold a licence in your home country, you can check online if it is accepted here.

[gov.uk/driving-nongb-licence](http://gov.uk/driving-nongb-licence)

Any car you drive must be properly registered, taxed and insured. There are also strict laws against drinking alcohol and driving, speeding and not wearing a seatbelt.

[gov.uk/browse/driving](http://gov.uk/browse/driving)

## Taxis

Taxis are a more expensive way to travel, but they can be useful for short journeys or travelling late at night. Ask the driver for an estimate of the cost before you get in a taxi and always check that it has an official licence plate.

Take a look at our map on page 16.



## Get settled in

### International Student Pre-Arrival

Visa and International Support are hosting events for all new international students. Here you will have the opportunity to learn more about Edinburgh Napier University, meet fellow international students and take the first steps to embracing your university experience in Edinburgh. Our team will also explain the registration process and Student Route visa.

Information on timing and how to access these online events will be provided closer to the time.

### Multi-faith Chaplaincy

The Chaplaincy service is for Edinburgh Napier students and colleagues from all faiths and from none, and provides a listening service designed to offer support and a sense of community. We also work in close partnership with Friends International – a Christian-based charity that works to build community amongst international students from all faiths.

[my.napier.ac.uk/wellbeing-support-and-inclusion/multi-faith-chaplaincy](https://my.napier.ac.uk/wellbeing-support-and-inclusion/multi-faith-chaplaincy)

### Studying in the UK

Studying at University in the UK may be different to what you have experienced before. There is a significant amount of independent study and you will need to be proactive. For example, to contribute in your classes, you are required to prepare beforehand by completing the necessary reading. If you are struggling with your studies, it is important for you to reach out to your tutors to let them know. UKCISA has additional guidance [on study skills for success](#) in the UK. Academic integrity is important in the UK and plagiarism is not acceptable. Further information about academic standards can be found on [MyNapier](#).





# In your first week

## Finance

### Arrange payment of your tuition fees

You can pay your tuition fees in full or in two, three or six instalments. If your fees are being paid by a sponsor, you will be asked to provide evidence at registration.

[napier.ac.uk/internationalfees](http://napier.ac.uk/internationalfees)

### Pay for your University accommodation fees

You will be asked to pay a £500 advance rent payment if you are staying in University accommodation.

You should set up a payment plan for your rent payments within five days of receiving your reservation email. Pay in full to receive a 2% discount, or set up monthly card payments. Please note: this discount excludes first trimester students.

[napier.ac.uk/study-with-us/accommodation/accommodation-faqs](http://napier.ac.uk/study-with-us/accommodation/accommodation-faqs)

### Open a bank account

If you are studying for more than one semester, you can open a bank account. For shorter visits, you will need to find a bank that will accept you.

Money Saving Expert is a good resource to help compare the different types of account available to you as a student.

[moneysavingexpert.com](http://moneysavingexpert.com)

Learn about the different banks and accounts and decide which suits you best. Staff in the local banks can also help find

the right account for you.

### How to open an account

Bring with you:

- Your passport
- A letter from the University confirming your student status and showing your address. To get your letter ask at your School Office.

## Get started at the University

### Get your student identity card

Your student identity (ID) card provides photographic proof of your identity as a current registered student at Edinburgh Napier University. It includes your student number, your photo and the end date of your course.

As part of the online registration process, you will be asked to upload a photo of yourself. Once you are fully registered, your ID card will be posted to your term-time address so make sure you update your address when you arrive.

### Attend your school academic induction

This is your first appointment with your school and explains when and where you need to be on your first day. You will meet your programme leader and fellow students. You will get the timetable for your classes at your induction.

### Attend Welcome Week events

This will be an opportunity to welcome those of you who are new to our community and to get involved in activities. We'll help you find all the services and information you need to succeed, from student wellbeing and inclusion, to careers and academic skills.

Welcome Week will just be the start of a programme of engaging activities we are planning. We have a dedicated team looking at a range of on-campus and virtual events to make sure you enjoy the great student experience that you would expect – both

academic and social – and that we are committed to delivering.

[napierstudents.com](http://napierstudents.com)

Your induction and welcome week timetable can be found here:

[my.napier.ac.uk/new-students](http://my.napier.ac.uk/new-students)

### Find out about student support in the University

We are here to support you throughout your studies. Visit our help and support section on page 15 to find out who to contact if you need to.



# Practicalities

## Register for healthcare

All students on full-time courses in Scotland are eligible for National Health Service (NHS) treatment.

**Register with a doctor soon after your arrival** in case you need medical advice or treatment whilst you are here. You can find your nearest doctor or GP (General Practitioner) on the NHS website. Remember to ask about your meningitis vaccine if you haven't already had it before travelling (see page 7).

**nhsinform.scot**

## How to register

Bring with you:

- Your student ID card
- Proof of identity (passport)
- Proof of address
- Your visa (if applicable)

## Arrange contents insurance

If you are staying in University accommodation, you will have contents insurance included. If you are staying in private accommodation, you will have to arrange this yourself.

Price comparison websites, such as **moneysupermarket.com** or **comparethemarket.com**, will help you find the best package for you.

## Get a TV licence

You need a television (TV) licence to watch or record live TV programmes on any

## Find out about emergency services

Call 999 in an emergency.

You will be connected to the police, ambulance, fire and coastguard services. Call this number if there is a danger to your own or others' lives or if there is a crime being committed.

Dial 111 if you have an urgent medical problem and you're not sure what to do.

For non-emergency minor crimes, you can call 101 to receive help.

channel, as well as to download or watch BBC programmes on the BBC iPlayer. This also applies if you live in University accommodation.

You do not need a TV licence if you do not watch or record live television but you still need to let the TV Licensing office know.

For cost information and payment details, please visit the TV Licensing website.

**tvlicensing.co.uk/studentinfo**

## Arrange council tax exemption

Council tax is set by local councils to pay for local services. As a full-time student, you will most likely be exempt but you will need to confirm your details with the council.

Visit myNapier for more information.

**my.napier.ac.uk/life-on-campus/campus-receptions/council-tax**



## Buy a local mobile phone

<b>Contract</b>	A fixed monthly cost to include phone calls, texts and internet access. Contracts usually last between 12-24 months.
<b>Pay-as-you-go</b>	Pre-pay for phone calls and texts by buying credit. There is no contract so it can be a better option if you will be in the UK for less than a year.

If you decide to have a UK mobile phone, there are many popular companies to choose from. We recommend that you do some research to find the best provider for you.

Price comparison websites, such as **moneysupermarket.com** or **comparethemarket.com**, or phone shops on the high street, can help you find the best deal.

## Find out about food shops

You can buy food from supermarkets and local shops. The main supermarkets in the UK include Tesco, ASDA, Sainsbury's, Morrisons, Lidl and Aldi. You can check products and prices on their websites.

There are many smaller shops that sell food from the local area or from around the world. You may be able to find foods and produce from your country or that you are familiar with.



# Help and support

**We are here to support you to achieve your goals**

## Academic Skills

✉ academicskills@napier.ac.uk  
[my.napier.ac.uk/your-studies/improve-your-academic-and-study-skills](https://my.napier.ac.uk/your-studies/improve-your-academic-and-study-skills)

## Accommodation

✉ accommodation@napier.ac.uk  
 ☎ +44 (0)131 455 3482  
[napier.ac.uk/accommodation](https://napier.ac.uk/accommodation)

## Counselling and Mental Wellbeing

✉ counselling@napier.ac.uk  
 ✉ mentalhealthadviser@napier.ac.uk  
 ☎ +44 (0)131 455 2459

[my.napier.ac.uk/wellbeing-support-and-inclusion/counselling-and-mental-wellbeing](https://my.napier.ac.uk/wellbeing-support-and-inclusion/counselling-and-mental-wellbeing)

## Disability Inclusion

✉ disabilityinclusion@napier.ac.uk  
[my.napier.ac.uk/wellbeing-support-and-inclusion/disability-inclusion](https://my.napier.ac.uk/wellbeing-support-and-inclusion/disability-inclusion)

## Employability & Careers

✉ careers@napier.ac.uk  
[my.napier.ac.uk/careers-support](https://my.napier.ac.uk/careers-support)



## Edinburgh Napier Students' Association (ENSA)

Services, sports and societies, volunteering and advice for students.  
[napierstudents.com](https://napierstudents.com)

## International team

Your local country experts are here to help you prepare to study at Edinburgh Napier.  
[napier.ac.uk/study-with-us/international-students](https://napier.ac.uk/study-with-us/international-students)

## Receptions and School Offices

Your first point of contact for information, advice and support on our campuses.  
[my.napier.ac.uk/life-on-campus/campus-receptions](https://my.napier.ac.uk/life-on-campus/campus-receptions)

## Visa and International Support

Provide specialist immigration advice, welcome and orientation support specific to your needs. Here to ensure you have a smooth transition into Edinburgh Napier and continued support throughout your studies.

[napier.ac.uk/visas-immigration](https://napier.ac.uk/visas-immigration)

✉ internationalsupport@napier.ac.uk  
 ☎ +44 (0)131 455 2272

# Edinburgh

## Getting around our campuses and city



**Bus services** will take you between our campuses and all across the city for a flat fare. Full time students are eligible for a Student Ridacard, making travel even cheaper. [lothianbuses.com](http://lothianbuses.com)



There is an extensive network of **cycle paths** to our campuses and each campus offers secure bicycle storage. [edinburgh.gov.uk/cycling-walking](http://edinburgh.gov.uk/cycling-walking)



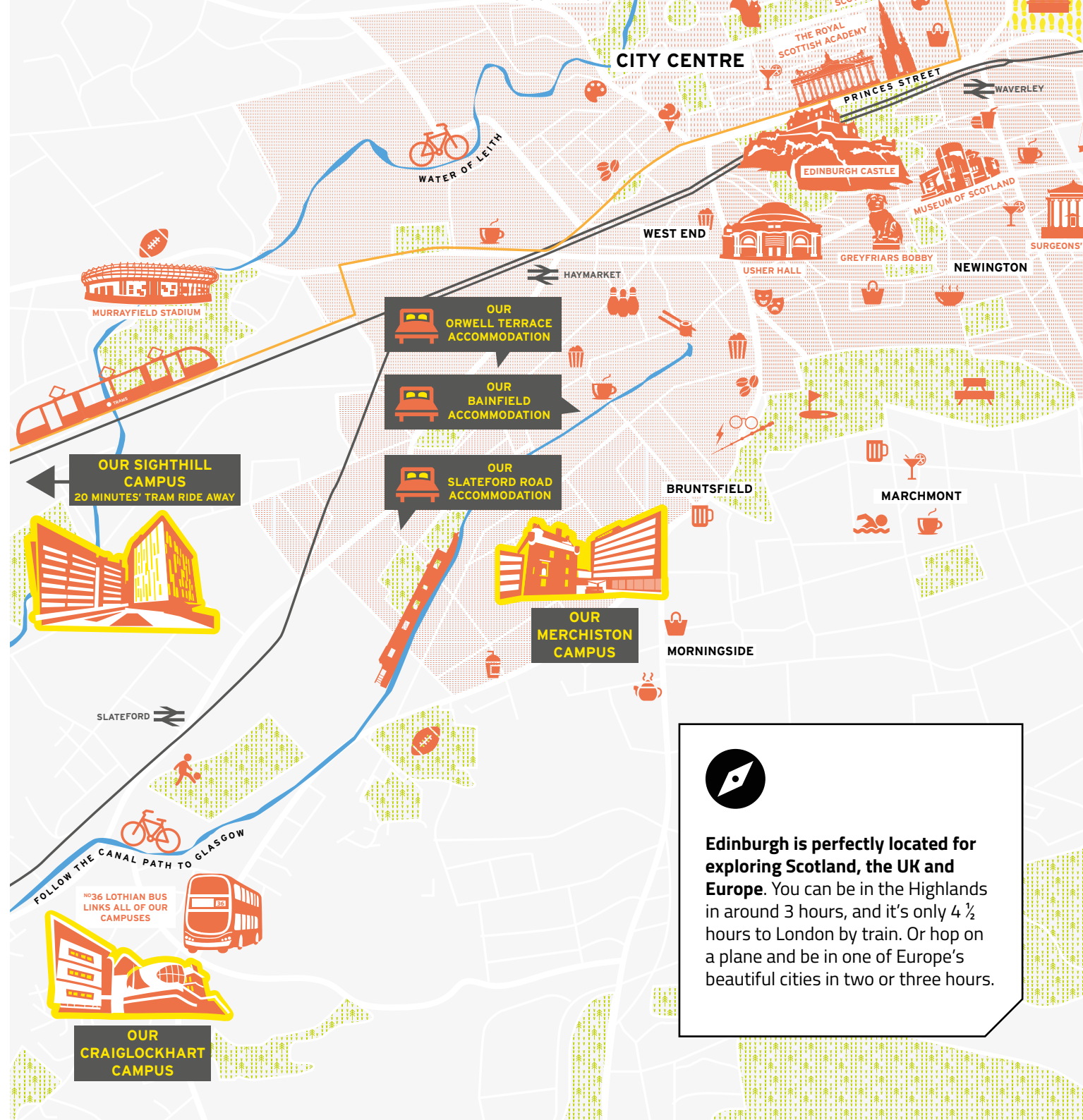
**The tram** is a great way to get across the city and runs through the centre of town, past our Sighthill campus and out to the airport. You can use your Student Ridacard, too. [edinburghtrams.com](http://edinburghtrams.com)



The **airport** is situated west of the city centre and offers flights to more than 150 destinations across four continents. [edinburghairport.com](http://edinburghairport.com)



Waverley and Haymarket **train** stations offer access to the whole of the UK and on to Europe. [networkrail.co.uk](http://networkrail.co.uk)



**Edinburgh is perfectly located for exploring Scotland, the UK and Europe.** You can be in the Highlands in around 3 hours, and it's only 4 ½ hours to London by train. Or hop on a plane and be in one of Europe's beautiful cities in two or three hours.