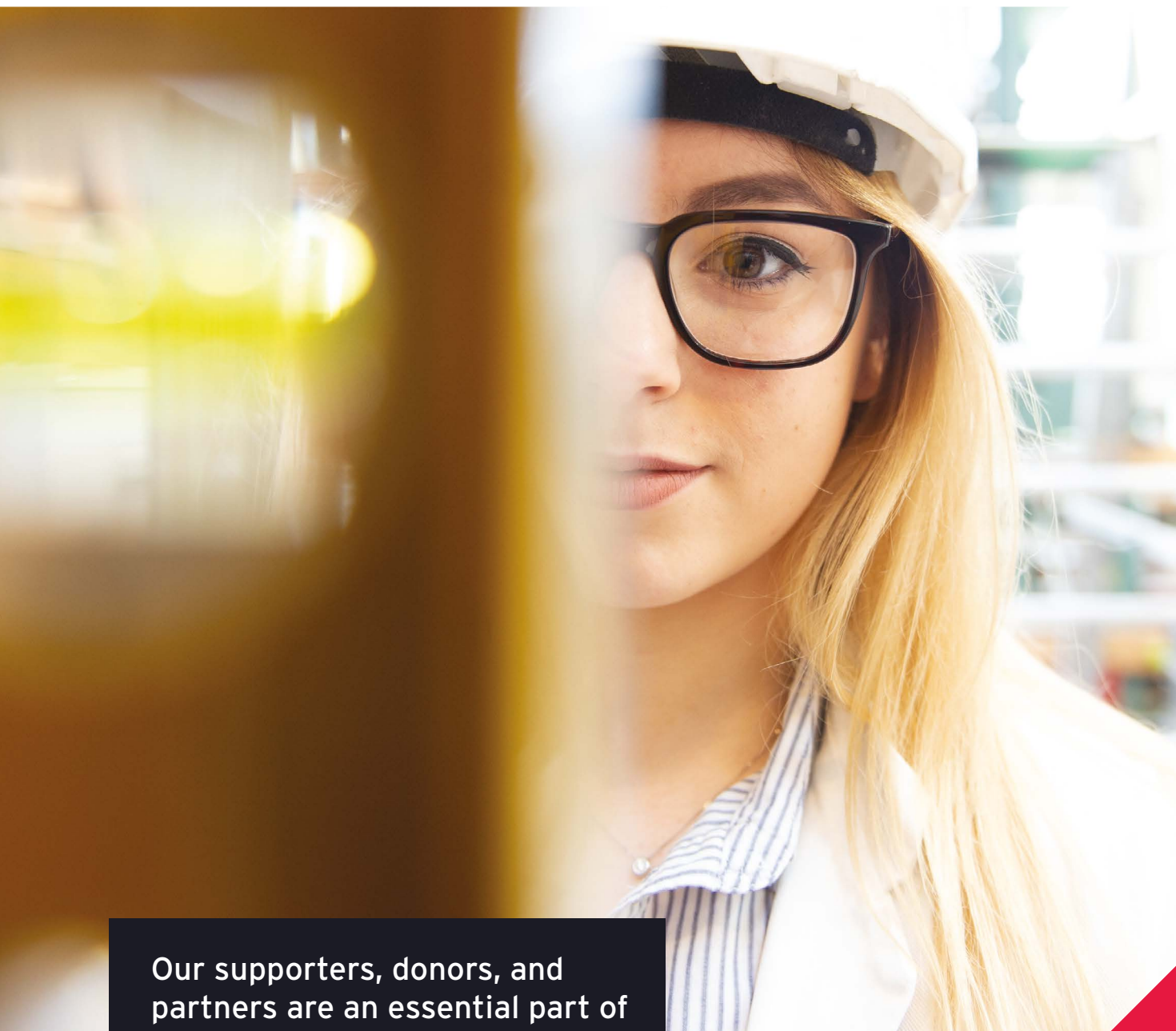




Supporter Impact Report 2025

Your support makes an extraordinary difference



Our supporters, donors, and partners are an essential part of the vitality of the University and together we achieve so much

Your support makes an extraordinary difference



Our supporters, donors, and partners are an essential part of the vitality of the University and together we achieve so much.

However you support us – be that big or small – you enable ambition, strengthen success, shape innovation, and amplify impact.

Together we open doors that might otherwise have remained closed; we drive positive change; and we advance pioneering research. It is your support that enhances the way we achieve things.

This report offers a snapshot of the extraordinary difference you make by supporting our impact for people, place, and planet.



You increase our impact

From Sue Rigby, Principal & Vice Chancellor



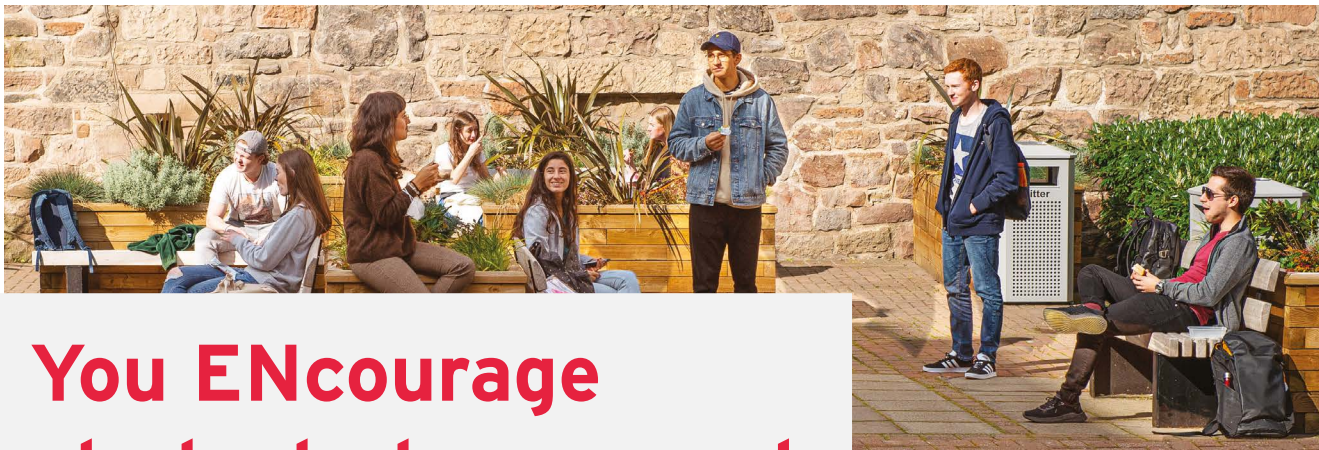
Edinburgh Napier University is an innovative university, inspired by and deeply connected to the world around it. We have a clear understanding of who we are and what we stand for with a strong reputation for ‘getting things done’ and driving action on the ground.

We have been recognised as the number 1 modern university in Scotland (Times Higher Education World University Rankings 2024), and in the past year we won Higher Education Institution of the Year, a Widening Access Award, Research Project of the Year, and an Outstanding Student Contribution award. Your support is a crucial part of these achievements.

As part of our community of donors, co-collaborators and supporters, you increase our impact. You support students to achieve their full potential and change outcomes for learners who have care-experience; you help our applied research to make a tangible difference in areas such as cardiovascular healthcare, conservation and restoration, and sustainable construction; and you enhance our ability to innovate and grow that underpins how we make a difference to people and societies.

Your gifts, whatever their size, are powerful. This Supporter Impact Report celebrates that power to create opportunities and spark discoveries, and comes with heartfelt thanks from the University community.

Sue Rigby
Principal & Vice Chancellor



You ENcourage students to succeed

We are proud to be a University that encourages people from across society to pursue higher education and supports them to be successful. We believe that no-one should have to give up their academic dreams due to financial insecurity, lack of access, or because of conflict and insecurity.

Through your support, we ENcourage ambition and change lives. We are immensely grateful to all donors, past and present, who have helped to open doors and increase opportunity through ENcourage scholarships and bursaries.

“Education is an investment for life. By being part of a community of donors making a regular monthly contribution to the ENcourage Fund I know I am helping to make a difference that will continue to have an impact.”

Jeremy Chittleburgh,
Donor and Chair of Edinburgh Napier Development Trust

Your support transforms lives

It is a worsening reality that increasing numbers of students* are facing severe financial pressures due to the rising costs of food, transport, rent, and energy. The struggle to secure financial wellbeing is putting many seriously at risk of losing out on the benefits of higher education.

A scholarship can be life changing. For each recipient it makes an immediate and lasting difference. Your support has enabled many students to receive scholarship support and through it realise their academic aspirations.

We want to do much more to help those who need this kind of support.

Currently, we are only able to offer scholarships to 1 in 6 of the applications we receive from students struggling with financial hardship challenges.



“We recognise that nursing students can face the additional challenge of juggling learning with demanding work placements, often involving significant travel. We hope to alleviate some of their financial stress, so they can concentrate fully on their training, through our support.”

Roger and Jean Miller Trust

* In the most recent Student Finance and Wellbeing Study 2023/24 half or more of students reported that they had experienced financial difficulty (50% of postgraduates, 56% of HN/undergraduates, 61% of FE students and 66% of students from under-represented groups).



How opportunity from generosity has transformed the lives of students who have received a scholarship:

Effie Donaldson received an Albert Morris Undergraduate Scholarship to help her study a BA in Journalism.

“I’m not sure I can convey quite how much this scholarship means to me. The opportunities it opens up feel endless to me, from purchasing equipment to being able to pay my rent without stress; it eases my mind considerably and I am so grateful.”

Tiernan Leake is being supported by a Baillie Gifford Scholarship, helping him study a BSc Biological Sciences.

“My financial situation meant I doubted I could stay afloat after I’d calculated all the costs involved. Receiving this scholarship removed that financial burden and let me put all of my focus on my studies, so I could enjoy my course, be enabled to take it all in, and develop my interests as I build towards a successful career. I want to say a huge thank you.”

Claire Bird is studying BM Midwifery through the support of a Roger and Jean Miller Nursing Scholarship.

“The scholarship is easing a great many financial worries for me. I gave up a full-time post within the NHS to pursue my dream to become a midwife, but I have two young children and a mortgage. I knew it would be challenging, and particularly difficult to do supplementary work alongside my placement hours. I am so grateful for this support.”



Student Gemma Taylor was enabled to study gentoo penguins

You enhance student success

Broadening horizons through learning outside of the campus can be incredibly stimulating, putting a student on a pathway to success. Your generosity is making opportunities like this accessible to those students who don't have the financial means to embark on these life-changing experiences.

Hear how opportunity from generosity made a difference:

"This support immediately took a weight off my shoulders and allowed me to conduct a research project by supporting my travel costs and research pass for a study of gentoo penguin courtship behaviours at Edinburgh Zoo for my honours project. It was an experience I will take into my future conservation-based career and I'm very thankful."

Gemma Taylor
Animal & Conservation Biology
Student Grant Initiative

"This support allowed me to complete a placement as part of my Professional Graduate Diploma in Education (PGDE) to become a high school maths teacher. I couldn't afford the travel costs, and without the bursary I would have needed to postpone my studies. My placement went really well, and I grew my abilities. I am so thankful for this support."

Andrew Norby
Professional Graduate
Diploma in Education (Maths)
Student Placement
Travel Bursary



"I would like to thank you for supporting my exchange to New York where I took part in two weeks of blended experiences. I learnt about the different ways people experience design in their day to day lives, which was indispensable knowledge that I don't think I could have gained otherwise."

Kai Menzies
Graphic Design
Student Grant Initiative



The difference your support can make

Alistair's story

Alistair Stewart is an inspirational individual. A care-experienced student, he has demonstrated considerable resilience and courage to achieve a first-class honours degree while committing to a range of projects working to improve things for others.

Supported by a Santander Scholarship in 2021 and a Trimble Scholarship in 2022, Alistair was also supported by the HUB for SUCCESS, for which he continues to work as a Student Ambassador. As a past president and founder of the Edinburgh Napier Disabled Students Society, he advocated for inclusion and support of disabled students in higher education. His commitment to diversity and inclusion was recognised through the 2024 Best Diversity, Equality & Inclusion Focused Student award by the Association for Events Management Education.

I attended two primary schools, went to three high schools, and had nine starts at college. The reason – because I am care-experienced. I grew up being supported by my grandmother, and by the local authority.

My care-experience meant that my education was very disrupted. I later discovered that I am neurodivergent and dyslexic. My determination to succeed meant I eventually found a route to university, or rather, Edinburgh Napier found me. Having been uprooted, bounced from school to school, and place to place, finally I felt safe and supported. This is something every care-experienced person wants, and it's something that Edinburgh Napier gifted to me.

I was lucky to be awarded scholarships to help me through my undergraduate studies. They meant I was able to buy an iPad, textbooks, and some furniture. But they meant more than that; for me it was fitting in with my peers and their latest tech, feeling at home in my home, putting down roots, and being enabled to access studying and realise my abilities.



University was a challenging yet enlightening path that not only tested my limits but also unveiled my strengths and guided me towards my true direction. I am filled with gratitude to everyone who played a part in getting me to where I am today, whether that was funding support or believing in me.

When I graduated with first-class honours it was especially sweet after so many false starts, wrong turns, and countless challenges.

University also taught me my identity is allowed to keep growing. My journey has been transformative, teaching me resilience, adaptability, and the power of education. Through the support I received I've been enabled to go forward to begin my next educational journey at Heriot-Watt University, pursuing an MSc in International Marketing and Consumer Psychology. This marks a new era, one where dreams take flight and aspirations become reality."



Your support is giving all students the opportunity to fulfil their potential

Charitable trust and donor support helps care-experienced individuals to access education.

The HUB for SUCCESS is an award-winning collaborative partnership hosted by Edinburgh Napier that is transforming lives. Its mission is twofold: helping care-experienced individuals to access or remain in education and advocating for systemic change.

Care-experience is one of the most under-represented groups in higher education, but conversely care-experienced graduates from full-time degree university courses are “more likely to be in work or further study after completing their course than their non care-experienced peers”^{*} demonstrating the positive impact of post school education as a route to success.

Traditional widening participation programmes have not been reaching care-experienced students effectively, but the HUB is proving to be a game changer. A recent



independent evaluation found it was delivering huge value and making a significant impact. In the academic year 2022-23, the number of care-experienced learners studying across the HUB’s partner institutions increased by approximately 400%, double the growth experienced in other areas of Scotland.

The HUB’s Student Ambassador programme has been fundamental to this impact. The HUB employs just five staff and coordinates a team of 26 care-experienced students as part of its paid Student Ambassador programme. Championed by the Vardy Foundation and Ernst Maas Education Trust, these student ambassadors are instrumental in the design, development, and delivery of all of the HUB’s projects, ensuring its work is driven by a deep understanding of the issues and concerns effecting care-experienced learners.

While core funding for the HUB comes from its education partners^{**} it is reliant on philanthropic support for aspects of its crucial work across Edinburgh and South East Scotland. In 2024 it secured £224,572 from CORRA Foundation through The Promise Partnership, to help scale its reach, including working with colleges and higher education institutions in Glasgow to cascade the model to support care-experienced learners in South West of Scotland.

The Educational Opportunity Foundation and Ernst Maas Educational Trust, along with the generous support from a wide range of individual donors, has supported the HUB’s impactful outreach to junior and secondary schools across the Edinburgh region, inspiring and engaging children from Primary 7 upwards.

“We were impressed by the innovative model delivered by the small team at Hub for Success, and particularly by the engagement of care-experienced students to champion and deliver the change that is needed.”
Vardy Foundation




^{*} Scottish Funding Council report
^{**}The HUB is a multi-partnership between the City of Edinburgh Council and eight universities and colleges in the city and surrounding areas.

Shared Purpose

Development of donor and philanthropic support at Edinburgh Napier is not just about generating impactful funding but how relationships can further shared purpose.

Increasingly, we are finding that donors and corporate partners are eager to collaborate with us to ensure their support creates positive change – Edinburgh Napier’s applied approach is highly attractive to those looking to see real impact happen on the ground. As companies look to align their ESG and CSR strategies, supporting applied research adds value not only to their business goals, but their philanthropic ones as well.

As a team, we seek to engage supporters in areas of interest to them so that philanthropy becomes a conduit for impactful joint initiatives that leverage collective resources – shared purpose drives impact.



Barbara Kidd, Head of Development

Working together

The next part of this report highlights how companies, charitable trusts, and investors are working together to meet the needs of the present, tackling global challenges, and addressing sustainability issues through support of the University’s work.

Some truly transformative action is happening through applied research within the Centre for Conservation and Restoration, while the University’s pioneering timber technology engineering and modern methods of timber construction are helping to drive the construction sector to smarter transformation. Tackling some of the key barriers to the effective deployment of care options is being championed by our Centre for Cardiovascular Health. Working with our donors we are enhancing the impact of these initiatives, delivering innovation, and reaping the benefits of shared purpose.

“Philanthropic donor support that champions early career researchers in cardiovascular healthcare is helping to deliver lasting impact. It is encouraging talented healthcare professionals to pursue a career in research. Through the research led by Professor Lis Neubeck and the team at Edinburgh Napier University, patients across Scotland and beyond, are empowered to manage their disease and live with confidence.”

Catherine Ross,
Chief Scientific Officer for Scotland

“Napier helped us explore the options available to optimise our funding partnership so it could deliver the greatest level of impact for the students we wanted to support. Through the Appin Awards we empower and encourage the next generation of entrepreneurs, providing them with the best opportunities to kick start their business.”

Damien O’Looney and Bing Li, Founders of Appin Sports and the Appin Entrepreneurship Awards

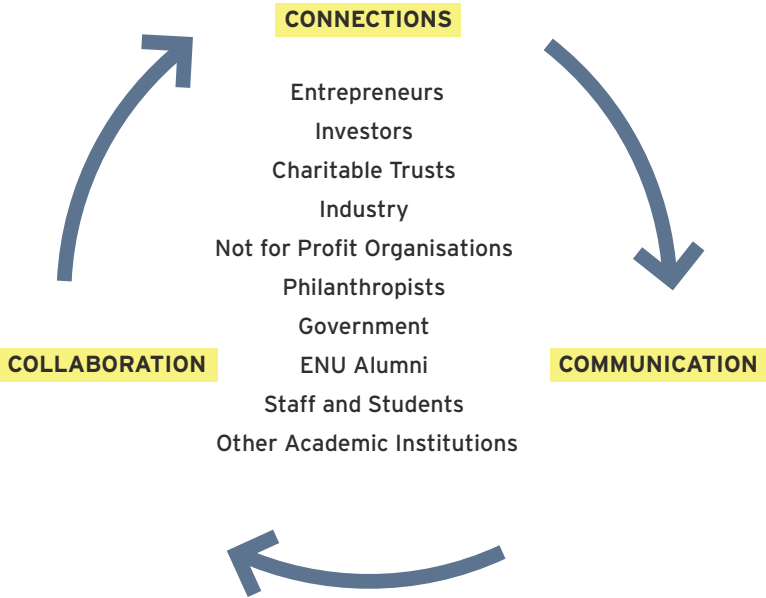
“Investing in research is the right thing to do on two fronts: not only does it help determine the right business decision, it also ensures we make the right decisions to support local communities and protect the environment.”

Balfour Beatty


A catalyst for connection, communication, and collaboration

The Development team acts as a catalyst to connection, communication, and collaboration with supporters and donors of all shapes and sizes; across entrepreneurs, investors, charitable trusts, industry, not for profit organisations, and philanthropists - many of whom are University alumni.


We share knowledge, promote projects, and present proposals, to engage interest and develop partnerships that can drive change, collaborating with like-minded partners and funders to enhance impact.




AREAS OF PRIORIY FOCUS



Student support & scholarships
ENcourage initiatives



Innovative engagement events
To support knowledge-exchange and inform research development



Applied research
Including: sustainable construction, conservation and restoration, healthcare



Trimble partnership
shaping the net zero future

We continue to grow our ground-breaking work with globally leading company Trimble, extending our prestigious Trimble Technology Laboratory facilities

Our world-leading applied research in sustainable construction, industrialised timber, and offsite construction solutions led to our pioneering researchers developing a long-standing relationship with Trimble. One of the first applications saw the embedding of research data within Trimble’s Tekla Tedds software which is used by civil and structural engineers around the world.

Recognising the continuing impact we could make together, Trimble partnered with us to launch the first UK Trimble Technology Lab (TTL) in 2019. By gifting equipment and software to establish state-of-the-art technology labs for architecture, engineering, and construction (AEC), Trimble is enabling us to cultivate highly trained graduates and to make a significant contribution to the net zero transition agenda.

“Our collaboration with Edinburgh Napier University is impactful. The shared focus on education and sustainability aligns with Trimble’s mission of transforming the way the world works.”

Amy Northcutt,
Director of Education
& Outreach, Trimble



The innovative bamboo-timber composite gridshell

In 2022, Trimble’s on-going support allowed the expansion of our TTL facilities to include a suite of rooms at Merchiston Campus within the School of Computing, Engineering, and Built Environment. More recently, Trimble has pledged a further £10.9million of in-kind support for the next five years, which will allow more students to access the latest tools and digitally empower our innovation for the built environment in new and exciting ways.

In addition, further impact has been achieved via the funding generated through the partnership, which has allowed 13 scholarships of £1,000 to be awarded to deserving students.

“Our partnership with Trimble has delivered tremendous benefits, helping us to excel in addressing the construction industry’s 21st century challenges by harnessing technological innovation. Together we are shaping the future delivery of the sustainable built environment through digital enablement.”

Professor Robert Hairstans,
Head of the Centre for Offsite Construction
& Innovative Structures

Using Trimble’s augmented reality technology a group of 30 students built Europe’s first bamboo-timber composite gridshell at Edinburgh Napier in September 2024. The structure was completed in just four days. Supported by Construction Industry Council of Hong Kong and the British Council, alongside partners: Built Environment - Smarter Transformation, Xylotek - Advanced Timber, Glenalmond Timber, and Intelligent Wood Systems.

Trimble has pledged a further £10.9million of in-kind support for the next five years



Your support is driving the evolution of ESG: Adopt, Adapt, and Advance

Focus on Sustainable Forestry and Allied Industry

Research at Edinburgh Napier has developed internationally recognised expertise and technical capabilities to support the delivery of innovative timber solutions for the built environment. Timber is a naturally renewable resource with many benefits over steel and concrete with regard to greening the construction industry. Our research is providing both the essential understanding of the characteristics of homegrown timber, and the engineering expertise, to support the creation of timber products for use in the design, manufacture, and construction of high-performance sustainable buildings.



Donor support facilitates crucial shared learning on the road to sustainability

Our 2024 Impact Investment Symposium, supported by Greenbank Investments and CGI – one of the largest IT and business consulting services companies in the world – brought together senior level decision makers from across industry, government, and the third sector, along with leading philanthropists, investors, and entrepreneurs, to look at how best to collaborate to enhance the future of sustainable forestry. Addressing crucial sector issues, such as combatting deforestation, enhancing biodiversity, and developing investment, the participants focused on how strategically driven funding support can maximise the potential of top-tier education and applied research, such as that championed by Edinburgh Napier, to deliver solutions.

“This convergence of global minds will foster progress. At Greenbank we aim to encourage investors to take the necessary steps to align their investments with the needs of the planet: the symposium provided an excellent platform to collaborate and further this objective in an important local context - the future of Scotland’s forests.”

Craig Leslie
Investment Director, Greenbank Investments

Dr David Brand, Founder and Executive Chair of New Forests, which manages more than £8bn in sustainable forestry assets, gave the keynote address and panel members including Dame Susan Rice (Chair of Forth Green Freeport), Dr Jim McCormick (CEO, The Robertson Trust), Simon Comer (Scottish National Investment Bank), Ross Hampton (Executive Director, International Sustainable Forestry Coalition), Paulus Geraedts (International Partnerships, European Commission), David Gardner (Chief Investment Officer, Forestry, Gresham House), Stuart Glen (Scottish Forestry Trust) and Anna Lisa McSweeney (UK Networks Lead, Built by Nature) discussed social, environmental, and economic routes to greater impact and how best to align investment to support sustainable forestry innovation.



Dr Wendy Wu, lead for the Investing for Impact Hub welcomes sector leaders

Roadmap for future impact

Recognising the importance of the symposium’s discussions, contributors to the event came together to fund a research assistant post specifically to assimilate all that had been shared. The postholder is devising a roadmap for further collaboration, centred around a number of prioritised projects which will advance progress towards net-zero, facilitate homegrown timber production and associated allied industry development.

New Investing for Impact Hub

A new Investing for Impact Hub was also launched at the symposium. It aims to drive a green and prosperous future for all by supporting on-going collaboration among industry leaders, innovators, and community advocates, with a focus on the integration of community wellbeing and sustainable forestry growth initiatives. We secured Royal Society funding for an Entrepreneur in Residence to support the next steps of this project.



The Symposium keynote was given by David Brand, Founder and CEO of New Forests (second left), with Prof Nick Antonopoulos, Dr Wendy Wu and Dr Paul Atkinson

“We are committed to bringing together expertise to enable positive climate change action. The collaboration between CGI and Edinburgh Napier University enables the development of innovative solutions and significant advancements in sustainable development to tackle complex societal issues.”

Mattie Yeta,
Chief Sustainability Officer,
CGI UK and Australia

“Through the Impact Investment Symposium we are facilitating meaningful collaborations and establishing partnerships to tackle some of the most pressing challenges we face.”

Paul Atkinson,
Chairman of Par Equity Investment and
Chair of the Impact Investment Symposium



Your support is enhancing crucial environmental and biodiversity initiatives

Providing the science and solutions to combat nature’s decline is a complex task and our Centre for Conservation and Restoration Science (CCRS) brings together biologists, computer scientists and engineers, as well as expertise in social sciences, psychology, the creative industries and business to deliver innovative science and solutions to help conserve, rebuild, and enhance biodiversity and ecosystems regionally and internationally.

Supporting authentic, peer reviewed research provides a way for funders and corporates to demonstrate their contribution to help address social and environmental issues responsibly.

National Highways and Balfour Beatty support evaluation of brownfield sites

‘Mind the Gap’ is an innovative study assessing the environmental importance of brownfield sites, building understanding of their unique biodiversity value. Scientists from our Centre for Conservation and Restoration Science (CCRS) have partnered with National Highways and Balfour Beatty to deliver this groundbreaking project. Using specialist sound surveys and site eDNA testing alongside more traditional techniques, the research will provide cutting edge assessment of five Historic Railway Estate brownfield sites in Scotland. The programme of work is also being used to develop an outreach education programme into schools through the National 5 syllabus.

“This impactful project provides us with an opportunity to reset and reframe how we think about and manage biodiversity.”
Robert Robertson, Balfour Beatty Project Manager

“The study will help us adapt and enhance our work to repair and maintain our land assets to help play a part in reducing the current global biodiversity crisis.”
Colin McNicol, National Highways HRE civil engineer

William Grant Foundation facilitates West of Scotland Herring Hunt (WOSHH)

The William Grant Foundation is supporting a three-year CCRS research project which will help to identify, conserve, and potentially restore essential herring spawning habitat. Herring are one of the most important fish in the seas around Scotland, and rebuilding resilient populations will deliver positive social and economic impact as well as improving biodiversity in the wider marine ecosystem. The project findings will help to inform policy decisions to support the future sustainability of herring.

Kilchoan Melfort Trust funds rewilding PhD

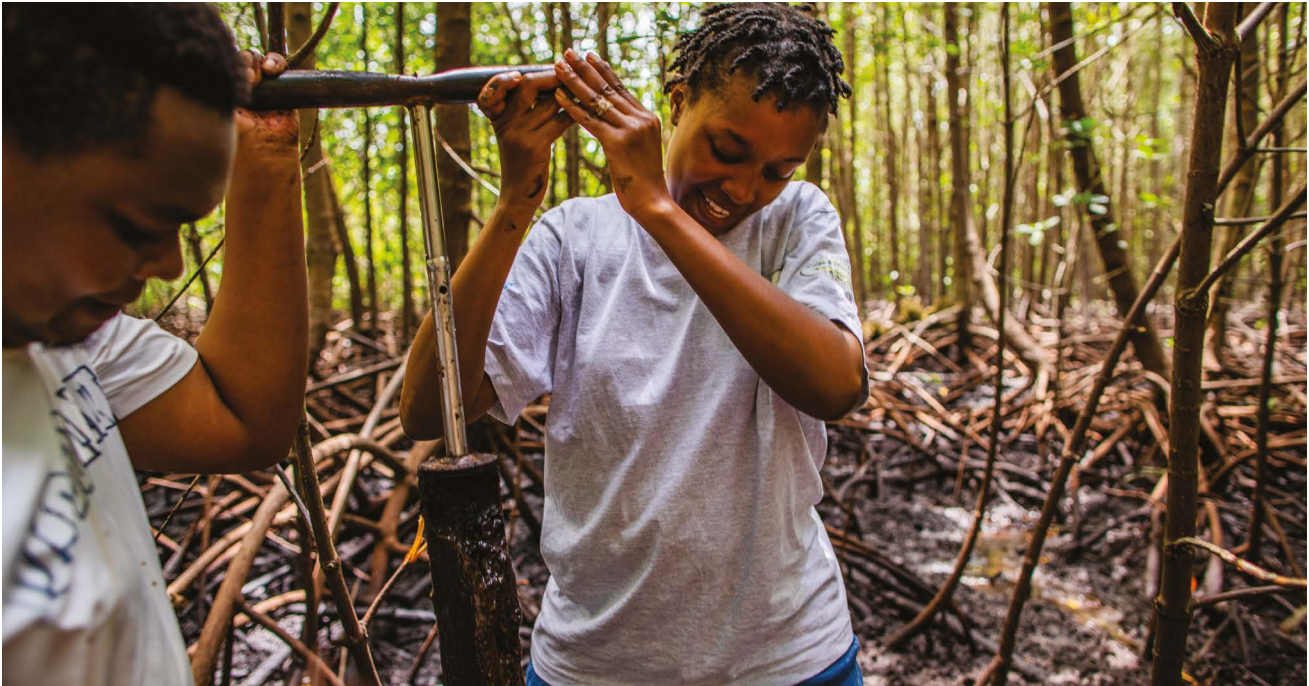
A PhD to advance understanding of wild mammal community responses to rewilding has been funded by the Kilchoan Melfort Trust in partnership with the CCRS. As well as generating new, critically important knowledge of endangered mammal species and how best to conserve and monitor them in the context of rewilding, the findings of this PhD project could serve as a blueprint for mammal monitoring at other rewilding sites across the country and internationally. Our undergraduate scientists have also been supported by the Trust, conducting soil biodiversity appraisal and monitoring using ecoacoustics techniques on a three-week field trip at the Kilchoan Estate.

Dona Bertarelli Philanthropy supports community-led conservation

Dona Bertarelli Philanthropy has been a critical partner in the work of Professor Mark Huxham of CCRS, supporting two separate projects that are demonstrating the impact of community-led conservation and restoration of blue carbon ecosystems.

Edinburgh Napier is the lead partner in Nnaa Saama Mankolou (Mangroves for Our Future), a community-led mangrove conservation and restoration project in The Gambia, one of the most vulnerable countries to the impacts of climate change. The project has investigated multiple methods for mangrove restoration, including active planting and the exploration of assisted natural regeneration methods, with the aim of halting deforestation and mitigating desertification across the Sahel.

Nnaa Saama Mankolou builds on the success of the ambitious Vanga Blue Forest mangrove conservation project in Kenya, led by Edinburgh Napier, which enabled the protection of 460 hectares of mangroves and the creation of community development projects supporting the livelihoods of nearly 9,000 people. The participating communities in this project are now extending their conservation efforts to the local seagrass meadows through a new project which will enhance local coastal resilience and biodiversity, while delivering sustainable community benefits.



Lilian Mugi, a PhD student in action in the mangrove forest



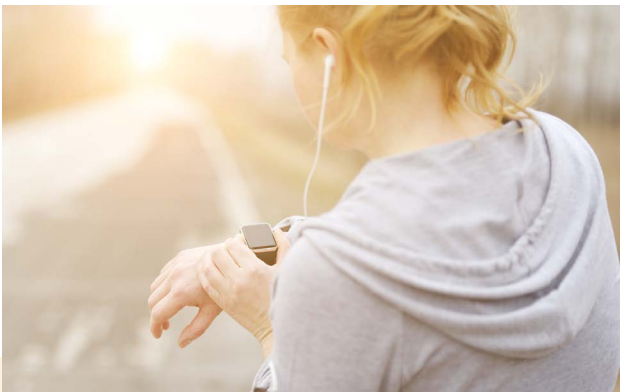
Your support is saving lives

Enhancing innovative cardiovascular healthcare projects

Research by allied healthcare professionals to complement the effective rollout of new treatment programmes into community settings is a significant area of growth for improving patient care. Our donors are significantly enabling Scotland, and other countries, to scale up their capabilities by supporting pioneering research and boosting numbers of early career researchers.

For example, Edinburgh Napier’s Centre for Cardiovascular Health led on the establishment of Scotland’s first SCAD clinic to support patients who have survived spontaneous coronary artery dissection. This rare heart condition mainly affects women under the age of 60, and currently these patients are not being well served by cardiac services. The SCAD clinic is working to improve understanding of the condition, develop effective treatments, and design safe and effective recovery programmes for SCAD survivors.

Recognising the urgent need to boost early career research to progress advances, individual donors such as Elizabeth Brown, and corporates such as Amarin – one of the world’s largest independent biotechnology companies – are currently supporting early career research aligned to the SCAD clinic. Their generosity is ensuring we can encourage and harness the ambition and aptitude of our brightest minds to tackle an issue that particularly needs championing.



“I support early career researchers within the Centre for Cardiovascular Healthcare because I recognise the considerable impact they consistently achieve with relatively small amounts of funding.”

Elizabeth Brown

“Amarin recognises the excellent research work being progressed by the Centre for Cardiovascular Healthcare. By supporting early career researchers who engage women in cardiac rehabilitation, we enable women with heart disease to manage their condition with confidence and get on with living.”

Amarin UK

“Edinburgh Napier is creating a national linked dataset to understand rehabilitation delivery in Scotland incorporating digital technology for people living with cardiovascular disease.”

Chest Heart Stroke Scotland



Your generosity is enhancing the potential of heritage to develop new visions for the future

Donations of all sizes are hugely important to our outstanding and distinctive heritage collections including our War Poets Collection, Edward Clark Collection, Mehew Stevenson Collection, Jim Haynes Archive, and John Napier of Merchiston Collection.

Heritage is not just a door to the past but can serve as an invaluable knowledge base for creating new futures: learning from the past can help scholars, researchers, and others, to create important and transformative work that addresses the challenges society faces today.



More relevant than ever

For example, our War Poets Collection – which contains many unique items pertaining to Wilfred Owen and Siegfried Sassoon, two of the country’s greatest war poets, and to their contemporaries – continues to have important social value, particularly as the world grapples with on-going armed conflict taking place throughout the Middle East, North Africa, and in various other territories.

Highlighting the brutal facts of conflict and suffering, the War Poets can help to educate us in the human cost of war while probing some of the most important questions of life, such as identity, innocence, guilt, loyalty, courage, and compassion. In this way, their work can both inform and inspire audiences, focusing attention on the need to reflect on what is happening around us in order to drive positive change.

All of our collections open doors to the future and each of them needs protecting. Your support enables their impact across engagement, learning, teaching, and research to continue.



Supporting educational journeys with Santander

Santander Universities is one of our most valuable partnerships, worth £50k a year, which has seen over £1.3million of support being provided to our students and academics since the relationship began.

The focus of Santander’s support is employability and entrepreneurship, plus facilitation of global mobility, with the aim of allowing more students, and businesses begun at the University, to prosper. The generosity of this programme has been transformational, and we are delighted to be a partner in the Santander network.



Transformational support



Undergraduate nursing student, Ekereobong Mark, is the current recipient of the Santander Universities’ Scholarship of £10,000. Providing three years of support, including an additional non-financial package of personal development and career support, this scholarship is life changing.

“It has assisted me immensely in completing my studies and fulfilling my dreams.”

Eke, who is now in her final year of a BSc Nursing.

Inspirational overseas experience

The Santander Universities Mobility scholarships support students wishing to participate in an overseas exchange who would ordinarily be unable to do so.

“It gave me the opportunity to experience Eastern Asia and the media community there, broadening my understanding of my field.”

Explains Gordon Barbour a BSc Digital Media and Interaction Design student.

“This support reduced my anxiety about the financial stress of managing while away at Queensland University of Technology, Australia - a priceless experience to develop my skills and gain valuable cultural and societal knowledge.”

Comments Marcin Bednarek who is studying a BA Film.

Boosting employability

We have recently agreed 26 Santander Universities Employability awards of £300 to support students to boost their employability. Covering costs such as travel, food, or formal work clothes, this funding helps to remove barriers for students participating in placements or work experience and is targeted at those who have the greatest need for support.

26 Santander Universities Employability awards of £300 to support students to boost their employability.

Enhancing entrepreneurship

The Santander Universities Entrepreneurship Fund of £15,000 facilitates awards to budding entrepreneurs who use our Bright Red Triangle (BRT) hub for extracurricular innovation, enterprise, and entrepreneurship practice.

£15,000 facilitates awards to budding entrepreneurs who use our Bright Red Triangle.

Brighter futures

The Santander Universities Brighter Futures Grant of £10,000 allows ten awards of £1,000 to be available to our students to spend on a variety of goods and services via the Santander Aspire webstore, including laptops, headphones, e-books, sports and fitness clothing and equipment and much more.

Ten awards of £1,000 to be available to our students.





Remarkable regular giving

Our committed regular donors are hugely important to us. No matter the size of the donation, regular giving makes a real difference, helping us to improve the lives of our students and make their academic aspirations a reality.

To leverage the impact of your regular gifts, we partner with the Robertson Trust and ICAS Foundation to offer a number of enhanced student scholarships for students who face barriers to higher education. In addition to receiving a funding award, scholars benefit from bespoke mentoring, networking, and career development opportunities.

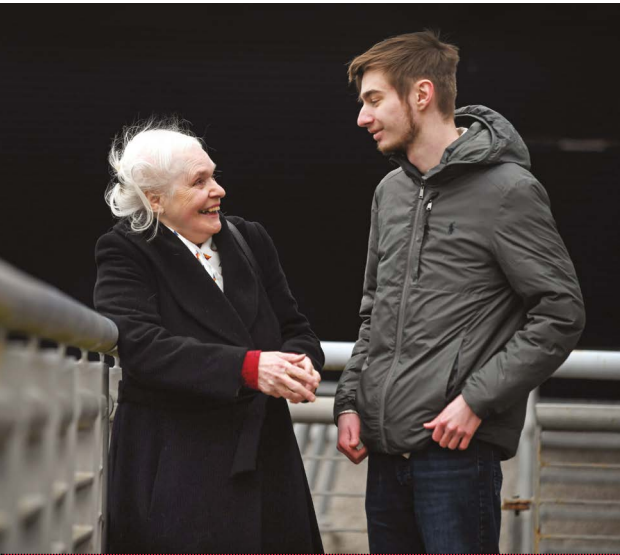
LEGACIES AND LONG-TERM IMPACT

Legacies and long-term impact

Legacies have the power to make a lasting impact for future generations of students and researchers at the university. It is an honour to receive this type of donation, and we are deeply grateful to those who choose to support to us in this way.

Philanthropist Ian Tomlin bequeathed us a very significant legacy gift of £750k which supports annual Music School scholarships and is assisting our plans for a new performance space. The Eileen Brown Scholarship was a legacy gift to support nursing students from the Edinburgh area gain a degree qualification which has benefitted four students to date.

Photo on right: Teresa Morris – wife of Albert Morris, the highly regarded Scottish journalist – created scholarships in his memory to support journalism students at Edinburgh Napier.



"I find it reassuring to know that through the legacy commitment Albert and I have made, we will continue to help journalism students to achieve their potential."

Teresa Morris

We are hugely grateful to our donors for their generosity and support of our students, research, and innovation...



- ICAS Foundation Matched Scholarships
- Robertson Trust Scholarship
- Robertson Trust Matched Scholarships
- Fife College and ENU Associate Student Scholarship
- Albert Morris Scholarship
- Albert Morris MA Scholarship
- Clements Family Scholarship
- Ian Tomlin PhD Music Scholarship
- Ian Tomlin Scotland Music Scholarship
- Balmoral Group Scholarship
- Dodyk Postgraduate Scholarship
- BSW Timber Group Scholarship
- Bill Taylor Scholarship (BEAR Scotland)
- Naysmith Scholarship
- Sean Mackenzie Scholarship
- ISC2 Scholarship
- Eileen Brown Scholarship
- Roger & Jean Miller Nursing Scholarship
- Cuminga Trust Nursing Grant
- Progeny Scholarship
- Thistle Seafoods Scholarship
- Santander Brighter Futures Grant
- Santander Universities Mobility Scholarship
- Santander Universities Entrepreneurship Grants
- Baillie Gifford Edinburgh Napier Access Scholarship
- ENU Hong Kong Scholarships Trust
- Harilela Scholarship
- Ian Kay Scholarship
- Lawrence Ho Scholarship
- Springford Family Scholarship
- Thomas and Margaret Roddan Trust Scholarship
- Appin Entrepreneurship Grant
- Moffat Trust (Centre for Entrepreneurship) Grants
- Leverhulme Trade Charitable Trust
- Karen Fretwell Prize
- Meteorology Prize for Best Environmental Sustainability Project
- Studio LR Graphic Design Prize

It gives me great pleasure to take this opportunity to thank all our donors who have generously supported us. Every donor is a partner in our on-going success and we hugely value the contribution you make to the University community.

I'm proud to share this report on all that your support has enabled us to achieve in recent times, and I hope you have enjoyed learning more about the difference it makes.

Thanks to you we can widen access to higher education, enrich the educational experience we offer, and apply ground-breaking research to support critical global challenges.

Every gift makes an impact: each one has the power to deliver positive change – be that to an individual student, wider society, or the environment around us. You transform the future for everyone.

**With grateful thanks,
Barbara Kidd, Head of Development & Alumni Relations**

- | | | |
|---------------------------------------------------|-----------------------------------------------------------------------------|----------------------------------------|
| The Clements Family Prize for Journalism | Fiona Carver Memorial Prize | Alzheimer Society |
| The Clements Family Prize for TV Production | Joanne Sharp Memorial Prize | The Bailey Thomas Charitable Trust |
| Michelle Rodger Memorial Prize | Simon Pullin Prize | Social Enterprise Scotland |
| Anjool Maldé Memorial Prize | The Progeny Prize | Royal College of Nursing Foundation |
| NVT Group Creative & Social Informatics Prize | JBTC Undergraduate Prize | Scottish Natural Heritage |
| NVT Group Postgraduate Prize | John Troy Memorial Prize (part of Progeny Prizes) | Royal Society of Edinburgh |
| NVT Group Security & Networking Prize | NatWest Group Outstanding MSc HRM Student Award | William Grant Foundation |
| NVT Group Software Engineering & Technology Prize | The Heath MSc HRM Knowledge Transfer Award | Royal Society |
| John Morton MacDonald Prize | Gerry Webber Graduation Prizes (Undergraduate and Postgraduate Awards) | Chest Heart Stroke Scotland |
| Axiom Prize | Educational Opportunity Fund (formerly British and Foreign Schools Society) | British Heart Foundation |
| Capita Symonds Prize | CGI | CORRA for The Promise Fund |
| CarbonStore Prize | Greenbank | Vardy Foundation |
| Doig & Smith Prize | Trimble Inc | Educational Opportunity Foundation |
| Jonathan Clark & Dunn Prize | James Jones and Sons | Armed Forces Covenant Fund Trust |
| Scottish Timber Trade Association (STTA) Prizes | Carnegie Trust for Universities Scotland | Royal Academy of Engineers |
| HCI Skills Gateway Dissertation Prize | Marie Curie Cancer Care | Burdett Trust for Nursing |
| Ann Cumming Prize for Dementia Care | | Balfour Beatty |
| | | Dona Bertarelli Philanthropy |
| | | ...and donors who wish to be anonymous |



**Help students reach their
potential at Edinburgh
Napier University.**



napier.ac.uk/single-gift

Edinburgh Napier Development Trust

Through Edinburgh Napier Development Trust, Charity Reg No. SC030225,
you can support students and their research so they can achieve even
more for the benefit of society and the environment we live in.

development@napier.ac.uk