

Edinburgh Napier
UNIVERSITY



MUST BE NAPIER



Undergraduate
COURSE GUIDE 2026



YOU'VE MET US ALREADY

MUST BE NAPIER



WELCOME

In these pages you'll find information about who we are, our courses and campuses, and why being part of Edinburgh Napier University could be exactly right for you.

Helping people get careers they love is what we're all about.

You may not know yet what you want to do but our **work-focused courses** will ensure that you'll be ready to make a difference whatever path you follow.

Learn from **expert academics** with up-to-date business and industry knowledge and gain opportunities to experience the **real world of work**. Our focus is to enhance your employability by developing the skills you need to succeed.

We know there's lots to think about when considering courses, so remember, we're here to help every step of the way.

With us, you come first.

www.napier.ac.uk/UG-Hello



CONTENTS

WHY YOU BELONG AT EDINBURGH NAPIER

4

Must be Napier

6

STUDY IN THE BEST LOCATION

8

Edinburgh

10

Scotland

14

Campuses

16

Accommodation

22

STUDENT LIFE AT EDINBURGH NAPIER

26

Become who you
want to be

28

Your learning environment

34

How we support you

36

Access for all

38

Ways to study

40

Financial support

42

International students

44

Edinburgh Napier

Students' Association

46

STUDY AREAS

48

Accounting & Finance

50

Acting

56

Biological Sciences

62

Building & Surveying

68

Business Management

74

Computing

80

Criminology, Psychology
& Social Sciences

88

Design & Photography

94

Engineering

100

English

106

Film, Journalism & Media

112

Law

118

Marketing

124

Music

130

Nursing & Midwifery

136

Sport & Exercise Sciences

142

Tourism, Hospitality, Festival
& Events Management

148

APPLYING TO EDINBURGH NAPIER

154

What you need to know

156

How to apply

158

Alternative qualifications

160

Fees and finance

162

Admissions information

166

WHY YOU BELONG AT EDINBURGH NAPIER UNIVERSITY

We are all about student employability.

We're the top-ranked Scottish modern university (THE World University Rankings 2025) with 97% of our undergraduate students in work or further study 15 months after graduation (HESA 2021/22). We're also a top 5 UK modern university for career prospects (The Guardian University Guide 2025) and a top 5 UK modern university for graduate prospects (Times/Sunday Times Good University Guide 2025).

We put you at the heart of what we do.

Our students have voted us the number one university in Edinburgh for overall satisfaction five years in a row (National Student Survey 2020, 2021, 2022, 2023 & 2024).

We give you the skills and experience that matter.

With over 120 undergraduate courses, a dedicated Student Futures team to guide you through work placements and study abroad opportunities, and an enterprise incubator for budding entrepreneurs, an Edinburgh Napier degree is your route into a career you love.

We offer variety, flexibility and the chance to explore.

We have three state-of-the-art campuses across the city of Edinburgh, flexible learning opportunities, and over 60 diverse student clubs and societies to choose from.

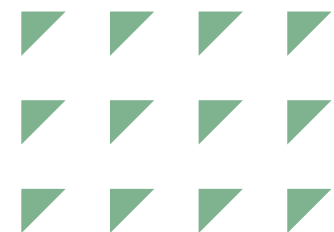
Get ready to feel at home at Edinburgh Napier



MUST BE NAPIER

We were the **first university in Scotland** to receive a gold award from the MOD's Defence Employer Recognition Scheme for our educational support and commitment to the armed forces community.

Our enterprise incubator, Bright Red Triangle, has supported **more than 700** student, alumni and staff start-ups.

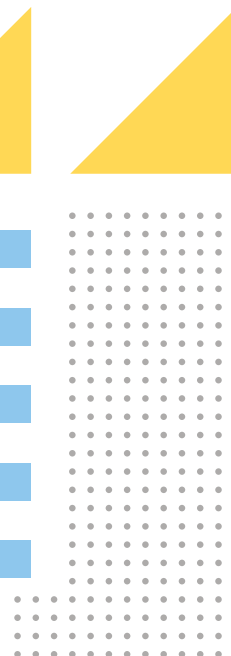


We are the **top modern university in Scotland** for research power and impact (Research Excellence Framework 2021).

We were the **first UK university** to have both undergraduate and postgraduate course options certified by the National Cyber Security Centre (NCSC) and we've received an NCSC Gold award for our contributions to cybersecurity.



We are a **top 10 UK university** and second in Scotland for generating successful spin-out companies (Octopus Ventures 2023).

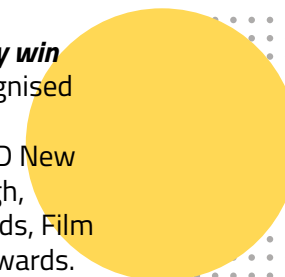


We won the **top award of Higher Educational Institution of the Year** at Scotland's 2024 Herald Higher Education Awards.

We co-founded the world leading Mikoko Pamoja conservation and restoration project in Kenya which won a 2023 United Nations honour.



Our students **consistently win top awards** and are recognised by industry before they graduate, including D&AD New Blood, DMA Breakthrough, Creative Conscious Awards, Film G and Royal Television Awards.



We were the **first university in the UK** to offer a board placement programme to our students, where they contribute to decision-making processes and network with top professionals through a placement on the board of a charity, voluntary organisation or public body.



We are the **lead partner** in the Edinburgh-based award-winning project, HUB for SUCCESS, which helps people with care experience get into or return to education.





MUST
BE
NAPIER

EDINBURGH

One of the best student cities in the world

Being a student at Edinburgh Napier makes you part of this amazing city. World-renowned for heritage, culture, festivals and tourism, Edinburgh has it all.

It's a special place, unlike anywhere else in the UK: a capital city with loads going on but small enough that you can get to know it well and find the areas and activities that best fit with what matters to you.

Filled with green spaces, incredible architecture, world-class restaurants and ghosts – in Edinburgh you can enjoy the beach, climb hills, discover independent shops, and experience art. The buzzing bar and music scene offers something for everyone. And of course, there are world-famous festivals and remarkable events, from the Edinburgh Fringe to Hogmanay.

As a student here you'll be part of a big community; Edinburgh welcomes thousands of students from near and far every year. It's a safe city too and easy to get around. You'll feel at home wherever you come from.

We love contributing to the city's dynamism through our students, staff, researchers and graduates. Join us and become part of it – we think studying here will make your student life a truly memorable experience.



Head to **www.napier.ac.uk/UG-Edi** for more about our magical city.



Each year, the QS Best Student Cities index looks at various aspects of a city, such as the student mix, quality of living and affordability, to identify the best student cities worldwide. Edinburgh is ranked 13th in the world and 2nd in the UK. Quite simply, it's a great place to be a student. (QS Best Student Cities 2025)

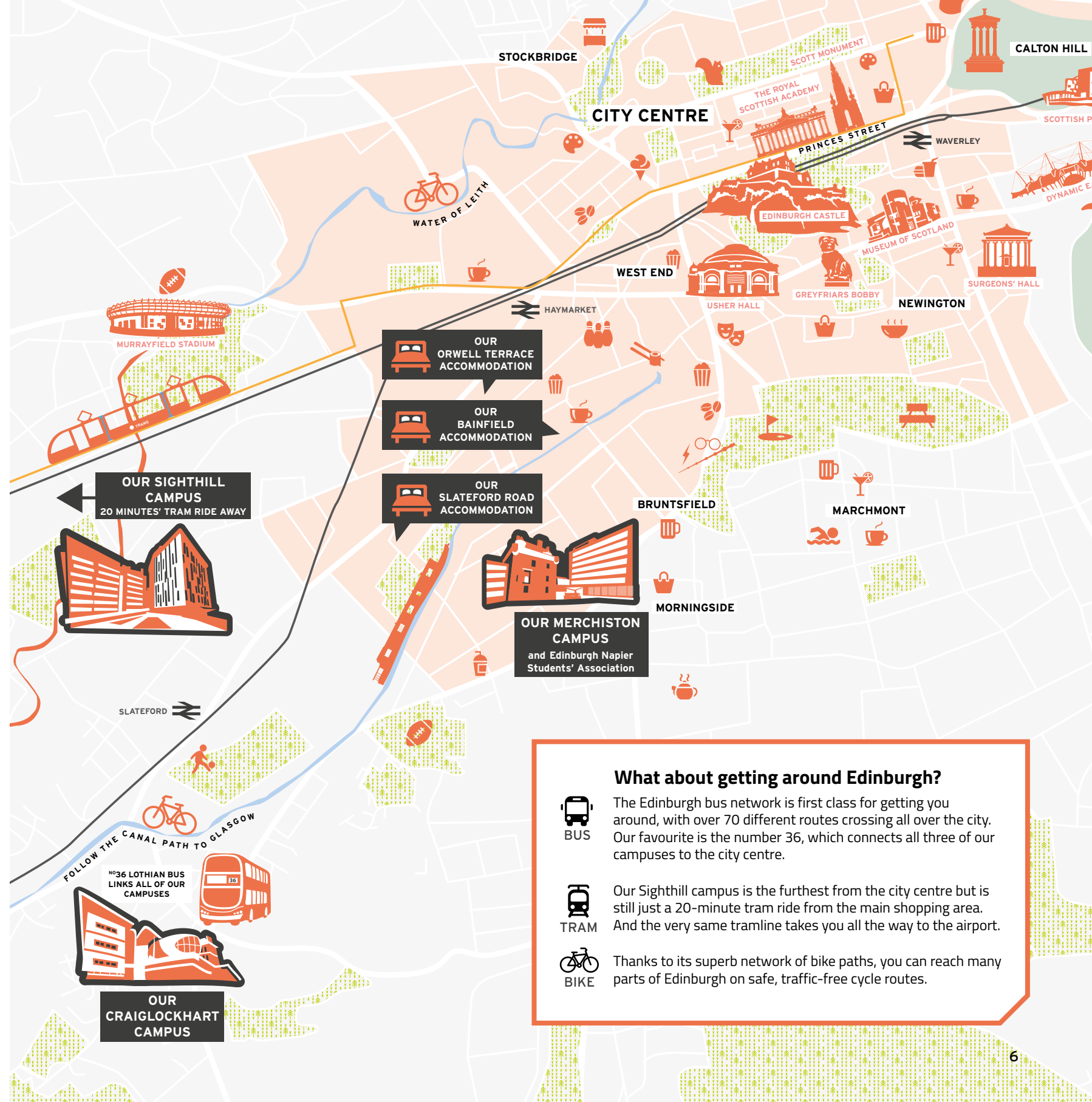
EDINBURGH

MAPPING THE CITY

Study in the best location

Wherever you are in the world, Edinburgh is closer than you might think.

- 25-minute train from Livingston
- 35-minute train from Dunfermline
- 45-minute train from Stirling
- 45-minute train from Glasgow
- 90-minute train from Newcastle
- 50-minute flight from London
- 50-minute flight from Belfast
- 75-minute flight from Dublin



SCOTLAND

There's nowhere like it

Let Scotland bring another dimension to your student experience. Offering stunning scenery, vibrant cities and world-class attractions – you'll never be stuck for something to do when you want to take a break from your studies.

Whatever you're into, you can do it here: cycling, ziplining, kayaking or white-water rafting; walk a scenic hiking trail, climb a mountain, or head to the ski slopes of Glencoe. You can dolphin and seal watch at nearby South Queensferry, or go further afield to hunt for the infamous Loch Ness Monster! We've local beaches at Portobello and Silverknowes or head to North Berwick or St Andrews for stunning sands.

If history is your thing, there are famous castles, legendary battlegrounds, standing stones and more. Or visit the iconic landscapes featured in films and TV from James Bond and Harry Potter to Outlander. Scotland's cities are all easy to reach: jump into vibrant cultural experiences from Glasgow's legendary music scene to dynamic design in Dundee.

In Scotland you're never far from something new and exciting to do.



To find out more check out www.napier.ac.uk/UG-Scotland

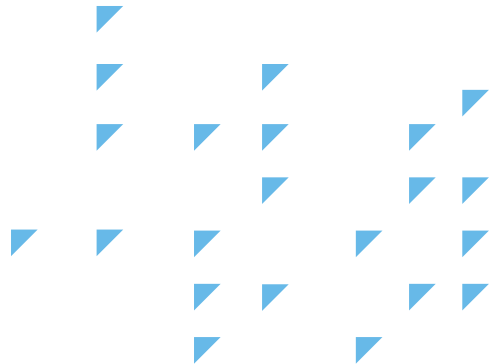


OUR CAMPUSES

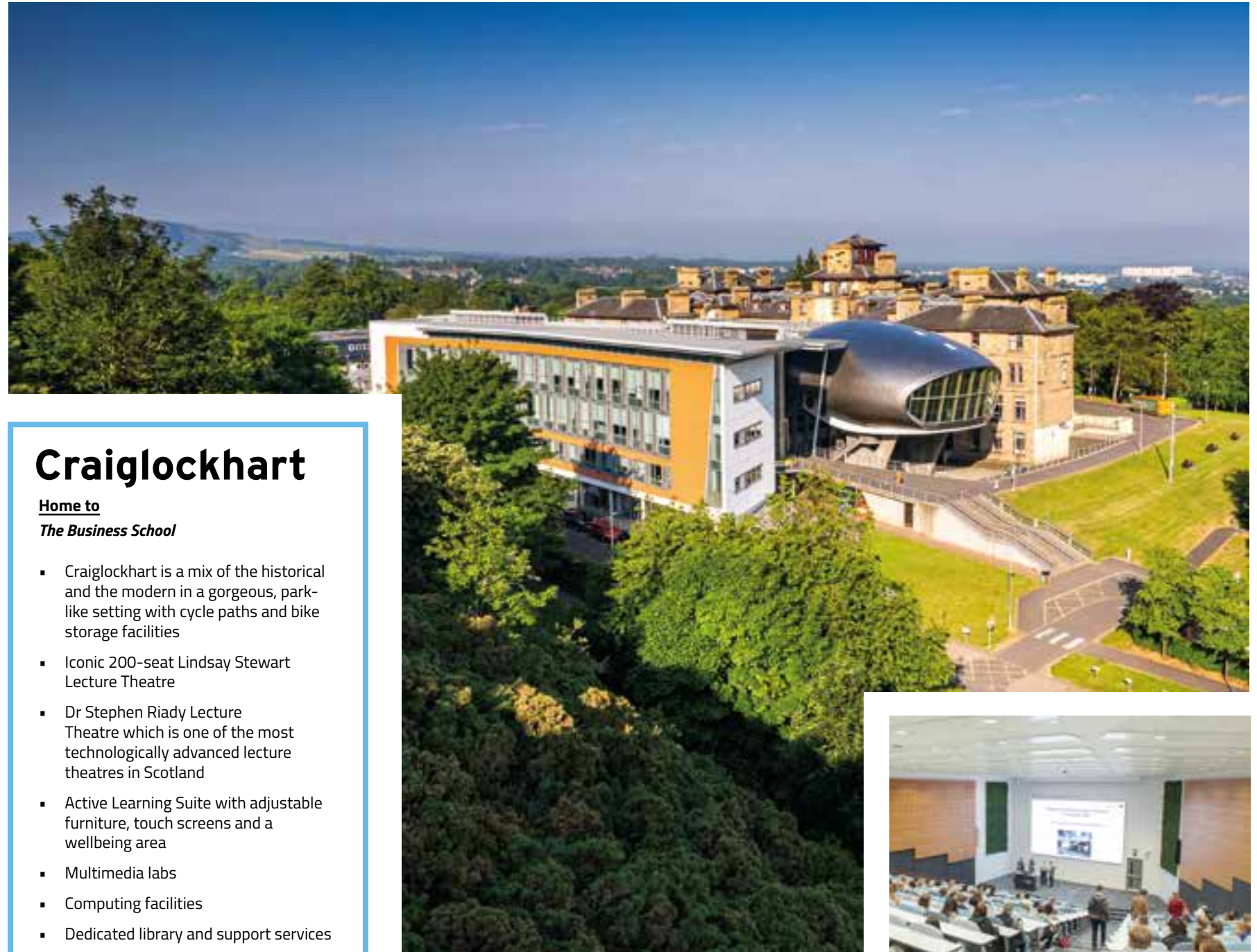
We have three campuses, each defined by distinctive features and course-specific facilities, as well as by the people (like you!) who study with us.

Our campuses are much more than where you go to class. Each is set up to be a second home for you while you study, with free unlimited Wi-Fi, Espresso Lab cafes providing ethically sourced coffee, tea and more, lots of great study spots and plenty of space to meet up with friends.

All of our campuses are within 20 minutes of each other and the city centre, so it's easy to access facilities or connect up with friends, wherever you are based.



Head to **www.napier.ac.uk/UG-campus** for the full low-down about each campus.



Craiglockhart

Home to
The Business School

- Craiglockhart is a mix of the historical and the modern in a gorgeous, park-like setting with cycle paths and bike storage facilities
- Iconic 200-seat Lindsay Stewart Lecture Theatre
- Dr Stephen Riady Lecture Theatre which is one of the most technologically advanced lecture theatres in Scotland
- Active Learning Suite with adjustable furniture, touch screens and a wellbeing area
- Multimedia labs
- Computing facilities
- Dedicated library and support services
- Coffee shop and cafeteria
- Walking distance to local cafes, restaurants and bars, and well served by public transport



Merchiston

Home to

The School of Arts & Creative Industries

The School of Computing, Engineering & the Built Environment

- The 16th century tower at the centre of the campus is where mathematician John Napier was born
- 500-seat Jack Kilby Computing Centre open 24/7 in trimesters 1 and 2
- Professional music, TV, radio, design and photography studios
- Industry-standard newsroom
- Specialist CodeLab with games development kits and NVIDIA-enhanced machines
- User Experience Sensorium lab, with eye tracking and facial expression analysis software
- Digital media labs, an Internet of Things lab and a Cisco networking lab
- Robotics and Automated Manufacturing lab
- Coffee shop and cafeteria
- Situated in the lively neighbourhood of Bruntsfield, surrounded by independent cafes, restaurants and bars, and close to popular hangout spot The Meadows





Explore our campuses
virtually at [www.napier.
ac.uk/virtual-tours](http://www.napier.ac.uk/virtual-tours)

Sighthill

Home to

The School of Applied Sciences

The School of Health & Social Care

- Sighthill campus is filled with smart spaces and awesome views over the city
- Recently expanded and newly constructed specialist labs
- State-of-the-art industry-relevant equipment
- Dedicated student research spaces
- Environmental chamber to simulate high-altitude conditions
- Simulation and Clinical Skills Centre
- Five-storey Learning Resource Centre
- [EN]GAGE gym and sports hall
- Coffee shop and cafeteria
- Well served by public transport

ACCOMMODATION

A supportive community

One big change when you join Edinburgh Napier might be living away from home. It's an exciting part of student life and in student accommodation, you'll be in it together, sharing space and experiences with new friends.

Living in our student accommodation you become part of a supportive community: our dedicated team of Accommodation staff and Resident Assistants are here to help you, providing guidance, advice, and out-of-hours assistance. They'll help you to settle in and get to know your neighbours through activities and events.

Our accommodation

Student accommodation at Edinburgh Napier is affordable, modern and purpose-built, located in and around the city centre, and within easy access of our campuses. Most rooms are en-suite, and you'll have a double bed, a desk and high-speed Wi-Fi. You'll share a kitchen and living space with a communal smart TV and have access to a central laundry.

All our accommodation is comfortable and convenient – you'll find supermarkets, bars, restaurants, and sometimes cinemas, are all nearby.

Private accommodation

Of course, you might choose to live in a private rented flat and we can help with that, with advice from how to deal with tenancy agreements to making sure you choose a great neighbourhood.



Our accommodation guarantee

We guarantee an offer of accommodation to all first year and direct entrant undergraduate students who:

- have accepted an unconditional offer
- live out with the City of Edinburgh (defined as EH1 to EH17)
- apply before the deadline
- are staying for the full academic year.

Head to www.napier.ac.uk/UG-home for full details.



ACCOMMODATION



What you need to know

How do I secure a place?

You'll be guaranteed a room if you're in your first year of studying, you live out with the EH1 to EH17 postcode area, you're staying for the full academic year, and you're applying before the August deadline.

When should I apply?

We usually start to accept applications for September 2026 intake from March 2026. You can apply online for a place via www.napier.ac.uk/accommodation

What is the cost?

It depends on your choice of accommodation. You'll find advice on costs and discounts online.

Will I feel safe?

Your comfort and safety are a top priority for us with support available 24hrs a day: from our full CCTV system and regular patrols to our Resident Assistants who live on site and are available every night. They can help if you're locked out, need advice or even just a chat. They are also trained in first aid, mental health first aid and conflict management.

Where can I find out more?

Head to www.napier.ac.uk/UG-home for videos of life in our accommodation, virtual tours of our sites, information about what's included and fees, and how to get in touch with our Accommodation office for further support.

The background is a vibrant yellow with a diagonal white band running from the top-left to the bottom-right. The white band has a fine, textured pattern of small dots. Various geometric shapes are scattered across the yellow background: blue plus signs in the top-left, orange squares in the top-right, a blue triangle with a diagonal line in the top-right, a cluster of blue squares in the bottom-left, a green square with a diagonal line in the bottom-right, and a red circle in the bottom-left. The text 'WE'RE EVERYWHERE' is prominently displayed in the center, with 'WE'RE' in red and 'EVERYWHERE' in black.

**WE'RE
EVERYWHERE**

MUST BE NAPIER

BECOME WHO YOU WANT TO BE

How we develop tomorrow's difference makers

At Edinburgh Napier we not only teach you the vital knowledge that underpins your chosen subject but ensure you have essential 'employability' skills too.

Employability is all about being 'work-ready'. It goes beyond academic learning to focus on the key skills that will help you to succeed in the workplace: skills such as initiative, confidence, being a team player, and the ability to manage people and projects.

Our focus on employability means that 97% of our undergraduate students are in work or further study 15 months after graduation (HESA 2021/22).

With us you'll gain the employability skills you need

One of the main ways we develop your employability is through real-world work experience.

We embed work placement opportunities, or other work-related experiences, as part of our courses, and you'll have access to a dedicated Placements team too. They'll work with you to find an opportunity that's right for you and which will enhance your degree studies.

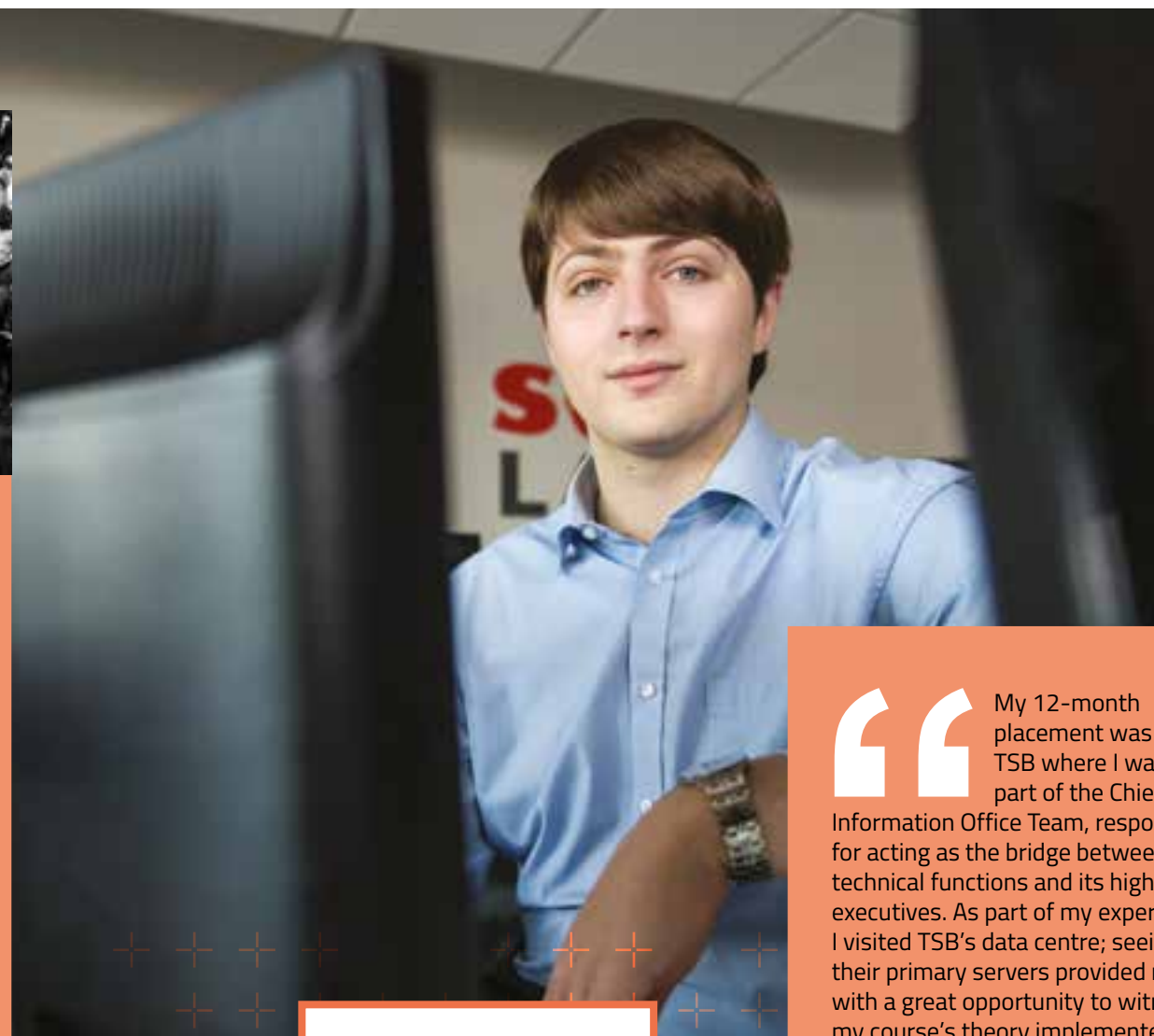


Being able to complete a degree that enabled me to gain industry experience was a leading factor in my choice to come to Edinburgh Napier. I undertook a six-month placement with the International Congress and Convention Association (ICCA), Amsterdam. Through it **I learnt how to professionally interact with customers, stakeholders, and co-workers, that included people from just about every country where the cultural-business etiquette varied, which was really interesting.** The experience increased my contacts and my skillset, and I learnt what kind of work I enjoy.”

Jessica McClure, BA International Festival & Event Management



Over 90% of full-time undergraduate students engage in work-related learning opportunities each year



My 12-month placement was with TSB where I was part of the Chief Information Office Team, responsible for acting as the bridge between TSB's technical functions and its high-level executives. As part of my experience I visited TSB's data centre; seeing their primary servers provided me with a great opportunity to witness my course's theory implemented on a large scale. **Through the placement I enhanced my soft skills and improved my understanding of how industry works.** I now know that I enjoy incident management related roles, so I am considering this as my future career.”

Andrew Beck, BEng Computer Systems & Networks*

*now BEng Network Engineering & Cybersecurity

BECOME WHO YOU WANT TO BE

Find the right path for you

Choosing to study at university is a big decision and you want to be sure it will help you become who you want to be. At Edinburgh Napier we aim to guide you towards work that you will not only excel at but truly enjoy, so our teaching and learning, and comprehensive range of support, ensures you gain the knowledge and skills that can take you where you want to go.

Get a head start with industry-led learning

All our courses are designed in consultation with business and industry, which means what we teach you will always be valuable to the employers you will seek out after graduating. For example, if you study Policing & Criminology, the course has been created through direct input from Police Scotland. Our lecturers are not only expert academics and researchers but have strong links to industry. For example, Computing Professor Bill Buchanan OBE is regarded as one of the top 100 people in Technology in Scotland and won Most Innovative Teacher of the Year at the Times Higher Education Awards 2023.

Make yourself distinctive

It's not just work placements that can develop the valuable skills you need to stand out. We can help you find a volunteering placement that will not only give you the buzz that comes from knowing you're making a difference, but also help you to develop communication and organisational skills that you'll need to ace interviews and make an impact in the world of work.

Get a global perspective

Spending time studying at one of our international exchange partners, from Austria to Australia, will help you to understand world issues and other cultures, which can give you a real edge in today's globalised job market.



“The capacity to learn new technologies and methodologies is the key skill you need to work in the ever-changing digital world. It quickly became a habit when I studied at Napier. **We had 24/7 access to first-class equipment and total support from our professors to explore new tech for our projects. I now manage a team of 20 web experts at France's leading private education provider,** and all the skills I learned help me to collaborate easily, whether I need to speak UI with a designer or data security with a developer.”

Michael Cesneau, Web Project Manager, IONIS Education Group

To learn more about how some of our alumni achieved their career aspirations, visit www.napier.ac.uk/alumni-stories



BECOME WHO YOU WANT TO BE

With us you'll be future-ready

Student Futures is our dedicated group of employability experts who can provide advice and support to kickstart your future. With their expertise you can explore career options, work out the best strategy to get started in your chosen field, begin your professional development and hone the skills you need to impress employers.

Our digital platforms are open to all students at any time: you can browse online resources, advice and support, or use them to arrange one-to-one meetings with our Career Development Consultants, book a place at one of our many employer events, or search for part-time and graduate vacancies.

Start your own business

Maybe your aspirations lie in creating your own world of work by starting a new business. Our Bright Red Triangle business incubator gives you access to our expert entrepreneur advisors and specialist business advice, as well as free office space. Bright Red Triangle has supported nearly 700 student start-ups since 2004. Yours could be next.



I'd recommend to any student at Napier that they use all the resources that are available, I undertook a placement at Barnardo's Visitor Centre at HMP Edinburgh which helped to enhance my employability skills, and then **the Graduate Recruitment Team (within Student Futures) supported me in a number of ways, providing useful guidance which helped me strengthen my application to Sacro.** Never be too scared to ask for help!"

Isla Toner, BA (Hons) Criminology, Click Support Worker, Sacro.



YOUR LEARNING ENVIRONMENT

Our expert teaching and leading facilities will enhance your learning

At Edinburgh Napier our learning environment will help you to realise your potential and become a highly employable, confident individual with the knowledge and skills to make a difference.

Purpose-built facilities

Whatever you choose to study, we teach you using fantastic facilities and equipment. You'll be able to surround yourself with the latest technology and resources no matter what field you're interested in. Our leading facilities include:

- NHS simulation wards
- Replica digital news centre with broadcasting booths
- Sports and exercise science suite with the largest environmental chamber in Scotland
- Professional photography, music and design studios
- Specialist engineering laboratories, a heavy structures lab, and the Trimble Lab
- Purpose-built life sciences laboratories

We continually update our facilities to reflect changes in technology and industry.

Top-ranked learning resources

Our learning resources, including IT and libraries, received an 89% positivity score in the National Student Survey 2024. Our 500-seat computer centre on the Merchiston campus is just one of the reasons why. Open 24/7 during trimesters 1 and 2, it means you always have access to the resources you need.

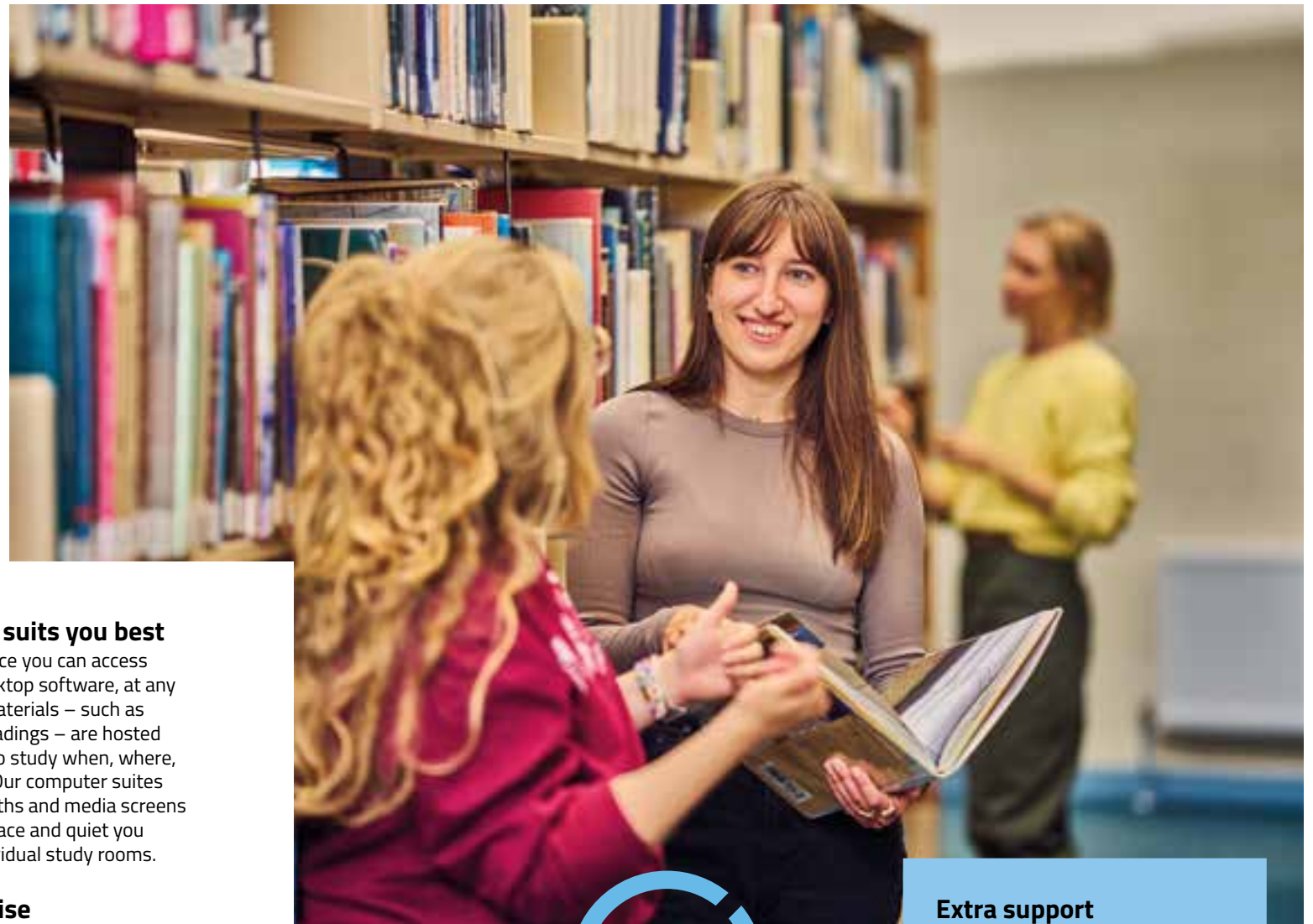
Study in the way that suits you best

With our virtual desktop service you can access your files and the leading desktop software, at any time, any place. Your study materials – such as lecture slides and required readings – are hosted online, giving you the ability to study when, where, and however suits you best. Our computer suites and libraries have shared booths and media screens for group projects, or if it's peace and quiet you need, there are plenty of individual study rooms.

World-leading expertise

When you study with us, you will learn from lecturers who are experts in their fields. Not only do they have unique links to business and industry that will maximise your employability, they are also nationally and internationally recognised for their research, working with organisations such as the United Nations, European Commission, Greenpeace and Medical Research Scotland.

Check out www.napier.ac.uk/UG-research to find out more about our academics' world-leading research.



Extra support

With laptop loans, free IT support and subject-specific librarians, you'll find the learning environment at Edinburgh Napier has everything you need to succeed.

Head to www.napier.ac.uk/UG-tools to check out the different facilities at our campuses.



HOW WE SUPPORT YOU

*It's important to us that you know
help is available when you need it*

When you join us you become part of our community and we pride ourselves on helping our community to flourish by providing the very best support that we can.

Through student-focused services and caring staff, we offer responsive and personalised support. Our 'open-door' policy means you can seek out advice, guidance and support from both our student support services and our academics whenever you need to.

Personal Development Tutor

We assign every student a Personal Development Tutor (PDT) during the first few weeks. You can check in with them and ask questions confidentially about study, life, or anything else. Whatever you may need, your PDT will help you find the right support.

Academic Skills support

From managing your new workload to essay writing and exam preparation, we'll support you to become an effective, independent learner, so you can get the most out of your studies. We offer regular skills tutorials and online workshops, or you can arrange a personal advice session with an Academic Skills Adviser. There are also online resources and our Get Ready website with tips and advice from our students, all of which will help to build your academic and study skills.

ENSA advice

Edinburgh Napier Students' Association (ENSA) provides a free, independent, confidential and professional advice service for Edinburgh Napier students. It offers one-to-one advice on welfare rights issues such as accommodation, funding and fees as well as issues relating to your course, such as academic appeals and University rules and regulations.

www.napierstudents.com/advice



Disability inclusion

We offer dedicated support if you have a disability or a specific learning difficulty. Our experienced, expert staff provide guidance and assistance, working with you to arrange support before you start your course and throughout your entire university journey.

Counselling and mental wellbeing

We have qualified counsellors, CBT practitioners and mental health advisers who can offer a range of support, including counselling, mental health advice, wellbeing advice and mindfulness drop-ins.

 my.napier.ac.uk/wellbeing-support-and-inclusion

English language support

If English isn't your first language, we offer English for Academic Purposes (EAP) pre-session courses prior to you starting, and English support throughout the year. We also have academic skills classes to prepare you as the UK education system can be different from what you are used to.



It's always good to know that guidance is on hand when you're feeling unsure.

Head to www.napier.ac.uk/UG-help to see all the help that's available.



ACCESS FOR ALL

We believe anyone with the potential to succeed should have the opportunity to study with us

Our community is one that welcomes anyone interested in developing their future through higher education. We recognise students are individuals and that not everyone's journey to, and through university is the same.

Here to help

As part of our admissions process we take into consideration the context in which you have achieved your grades, which may have meant you faced more challenging circumstances. With our 'Contextual Admissions Policy' if you meet certain criteria, such as living in a certain area, going to a particular school, have been in care or are an unpaid carer yourself, you may be eligible for an offer based on our minimum entry requirements.

Find out more at www.napier.ac.uk/UG-all

Adult returners

We welcome adult returners and know that sometimes the standard selection process doesn't allow you to demonstrate all the skills you've acquired during employment or other experience. To ensure we can make an informed decision on your application we may ask you to provide more information, so you can tell us all about your potential.

Care experienced

If you've been in care we have extra help for you. We offer the one-on-one support of a Student Adviser from pre-entry advice all the way through your time with us. Help we can offer includes a guaranteed year-round accommodation tenancy option and access to additional funding (including a bursary providing up to £1,000 per year of study).



Armed Forces community

We are committed to greater access to education for those leaving military service or in active service. We'll help you transition into university life or study while in service, including providing support through the Armed Forces Network. We are a recognised learner provider for the MoD's Enhanced Learning Credits Scheme.



My prior learning and qualifications were accepted as entry criteria for the BA Business & Enterprise programme. The support from the Edinburgh Napier staff is fantastic. Delivery of training is at an RAF Station in my region. This makes getting to lessons hassle free and 'comparing notes' with other Service people in the cohort is a peer support aspect that should not be underestimated."

Alwyn Jones, Engineering Manager, Royal Air Force.



Disabled applicants

Our Disability Inclusion team is here to support students with health conditions, disabilities and specific learning difficulties. Telling us about your support requirements in your application means we can contact you to review what to arrange before you join us. We can also help you check whether you might be eligible for additional Disabled Students' Allowance funding.

Coming from college

We welcome applications from students who are currently, or have previously studied at College on either an HNC/D or Access programme. We provide pre- and post-transition guidance and you'll have a dedicated Coming from College Adviser who will support you right through to graduation.



Our Enquiry and Outreach teams are here to help no matter your background. We can provide information, advice and guidance. You can contact us on **0333 900 6040** or via the enquiry form at: www.napier.ac.uk/ask

ESTABLISH is our team of dedicated Widening Participation Student Ambassadors who host an online community of incoming widening access students, supporting them to get the most out of student life at Edinburgh Napier. ESTABLISH provides support in a year-long induction programme and looks to help students through times of increased pressure.

WAYS TO STUDY

Our flexible provision means you can find a way to study that best suits you

We have a proud history of supporting our students to achieve a degree whatever their circumstances.

Full-time and part-time courses

For UK students, many of our full-time courses can also be studied part-time – same great professors, same relevant programme – just studying fewer modules at a time over a longer period than full-time study, to suit your life circumstances.

Online learning

Wherever you are in the UK, or across the globe, our online courses give you access to an Edinburgh Napier degree and the opportunity to achieve an internationally-recognised qualification. All your learning will take place online but you'll still benefit from our supportive community. For full details go to www.napier.ac.uk/online.

Apprenticeships

An apprenticeship is a great opportunity to undertake work-based learning that can boost your application to university or enhance your employability. Foundation Apprenticeships can be taken in S4 or S5 and will build your skills and bolster your application to university, while Modern Apprenticeships offer paid work opportunities so you can gain vital skills while studying for a qualification up to HND level. Both types offer progression opportunities into Graduate Apprenticeships of which we offer a range in business, computing and engineering subjects. We have over 440 graduate apprentices working with 144 employer partners to earn a wage at the same time as studying for their degree. Go to www.napier.ac.uk/apprenticeships for full details.

Associate Student Scheme

Our Associate Student Scheme allows you to study for your Higher National Diploma (HND) at one of our partner colleges while guaranteeing you a place with us in the third year. This guarantee is offered on a number of degree courses across computing, business, engineering and the built environment. You'll feel like an Edinburgh Napier student even while you're at college, with access to all our facilities and resources.



Head to www.napier.ac.uk/UG-study for more information on all of our ways to study.

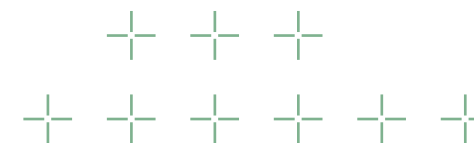


FINANCIAL SUPPORT

We offer a range of scholarships, bursaries and funding to help you study with us



Head over to www.napier.ac.uk/UG-funding to see exactly what you are eligible for and how to apply.



UK (from outside Scotland) and Republic of Ireland Students

Students from England, Northern Ireland, Wales, the Channel Islands, the Isle of Man and the Republic of Ireland are generally classified as Rest of UK/ROI for fees purposes, and are able to access specific support including:

Access and Merit bursaries

We provide a generous bursary package offering a cash award of up to £3,000 per year (dependent on your financial circumstances and/or your academic achievement).

Fee Waiver

The majority of undergraduate degrees in Scotland last four years (compared to three years elsewhere in the UK), providing greater breadth and opportunities within your course. When studying with us this means, for example, that there is usually the opportunity to undertake work-related experience as part of your course. All eligible students on courses of four years or more in length will automatically receive a single year fee waiver. This will typically be applied in your final year of studies, except where you undertake an exchange abroad or work placement where the fee waiver will be applied during the year this takes place.

Access to other funding

Our team of Student Funding advisers work to support all eligible students to apply for additional sources of funding, including Discretionary and Childcare, and can provide advice on how best to manage on a budget.

Through a scholarship or a bursary award, you can receive a sum of money to support you while you study with us which you won't need to pay back.

Depending on the specific award's eligibility criteria, funding can support living costs, childcare expenses, tuition fees or a specific project that is beneficial to your academic and personal development. So it is well worth checking out what financial assistance you might be eligible for.

Here's an idea of what financial support can do:

- Cover the costs of course fees.
- Help with living costs.
- Enable travel, research or aid personal development.
- Help you take a passion further, such as sports or the arts.
- Support a start-up business dream.

Bursaries and scholarships explained

A bursary will be given to you automatically if you meet certain criteria; for example, if you come from a low-income household. You don't need to apply for these bursaries, we will let you know if you are eligible when you confirm you will be starting your course with us.

To receive a scholarship, you may have to submit a separate application and the process can be competitive or distributed on a first-come first-served basis, so it's important to apply early.

There are special scholarships available to help with specific projects as part of your course, such as if you decide to study abroad, or do a research project locally. There are also elite athlete and country-specific scholarships available.

INTERNATIONAL STUDENTS

We are dedicated to advising and supporting you

For students joining us from across the globe, our International team is here to help. We know that moving to a different country to study is a big decision but we can support you every step of the way.

Our team is here to assist with pre-arrival information, orientation programmes, immigration and visa advice, English language classes, workshops to prepare you for studying here and loads more.

With us you will join an international community of students from 140 countries, either learning on campus, online, or with one of our overseas partners.

Internationally recognised

We are ranked in the top 600 in the World University Rankings by Times Higher Education and have an overall score of 4.4 stars according to student reviews on Studyportals which rates study and living experience at universities from all over the world.

Studying at Edinburgh Napier you will gain an internationally-recognised qualification based on leading academic theory and professional know-how, so you'll be ready to make an impact wherever you base your career.

Connect with us

Our International Team is based in Scotland and across our regional offices in China, India, Malaysia, Nigeria, Pakistan and the USA, so you can contact us here in Edinburgh or talk to someone who is closer to where you are.

We also have local representatives overseas who can provide information and advice. Head to our website to see if there is a representative working in a city close to you. Our staff also travel the world to attend educational events and there might be one happening near you soon. Find out when we're next in your country on our website.



For all the information you need, head to www.napier.ac.uk/UG-international



EDINBURGH NAPIER STUDENTS' ASSOCIATION

Make the most of your student experience

Edinburgh Napier Students' Association (ENSA) works all year round to help you make the most of your student experience – from providing a whole host of fun extra-curricular activities to representing your interests through our campaigns – and we're also here to directly support you with any academic or personal issues.

Join our community

ENSA offers a variety of events, sports clubs and student societies covering a broad range of activities, interests and hobbies. Being part of a sports club or society is a great way to meet new people, make friends and feel part of our student community.

Pursue your interests

ENSA Societies offer lots of opportunities to have fun and throw yourself into new experiences. With musical, cultural, performing arts, academic and hobby-based societies, there's lots to choose from. You can even start up your own if your interest isn't already covered!

Get into sports

Getting involved with ENSA Sports can be a really valuable part of your student experience. Lots of our clubs are open to complete beginners who just want to play for fun but if you want to take things more seriously, most of our clubs also play in inter-university competitions. Wednesday afternoons are typically dedicated to playing in leagues against other universities around the UK.

Make a difference

ENSA works to raise awareness of the issues affecting our student community and there are lots of ways to get involved, from taking part in our campaigns or joining one of our Student Forums, to being elected as a Programme Rep or even aiming for Student President! Through ENSA you can build relationships, drive improvements across the University, and make a real difference for the student community – skills which can also help to build your CV!



Want to see the full list of sports and societies that you could get involved with once you're here? Head to www.napierstudents.com to check out everything you need to know about the Students' Association.





LEADING THE CHARGE

MUST BE NAPIER

ACCOUNTING AND FINANCE

- **We are the #1 UK modern university for Accounting & Finance** (Times/Sunday Times Good University Guide 2025).
- Our accounting courses are accredited by major UK accounting institutes, providing exemptions from many of their exams, so you'll be professionally qualified sooner than most.
- We are the only Scottish university to offer an undergraduate degree in Financial Services.



www.napier.ac.uk/do-finance



“ You will learn from tutors with backgrounds in accountancy or financial services, giving you the benefit of their understanding of the business world. **Our Financial Services programme offers a 24-week work placement in year three – an ideal way to gain insight into the industry and become work-ready. Our Bright Red Triangle business incubator offers you an opportunity to develop your entrepreneurial spirit and get your business idea off the ground through expert advice and mentoring.”**

Dr Sarah Borthwick Saddler,
Lecturer, Accounting.

“ One of the reasons I chose Edinburgh Napier was because of its strong emphasis on employability. Furthermore, to have a devoted career development team on hand to give guidance and support for CVs, cover letters and interviews is incredibly valuable as I begin looking for graduate positions. Ever since I joined in first year, I have felt like I have had a very strong support base around me. Being assigned a personal development tutor who sticks with you throughout your university progression is an aspect I have really appreciated as they get to know me and my journey personally, and it is incredibly valuable to have that person that you are familiar with on the academic team who you can turn to.”

Jason Beaumont-Balman, Year 4,
BA (Hons) Accounting.



“

My favourite aspect of my course has been the number of collaborative projects with my peers.

This has meant I have been able to meet a lot of new people during my time at university. **I've also found the range of future career support – including visits to company offices, and talks from professionals in the subject I study – particularly useful in my studies.**”

Cameron Sainsbury, Year 4, BA (Hons) Accounting with Corporate Finance.

“

Studying at Napier shaped the path I chose, provided the career support to land a job which suited me, and provided me with the initial skills to get off to the right start. I was supported thoroughly in the job hunt process. The course gave me the core skills and knowledge to succeed in the industry, as well as freedom to focus on areas of interest to me by allowing me to tailor certain modules. **When I moved into my Financial Accountant role, the skills I gained across all qualifications have turned out to be very transferrable and I still refer back to all of my notes on a regular basis.**”

Leanne Wilson, Financial Accountant, Baxters Food Group. Graduated 2018, BA (Hons) Accounting.

CAREERS

GET INTO WHAT YOU'RE INTO

Risk Manager

Investment Banker

Independent Financial Adviser

Fund Manager

Stockbroker

Accountant

Tax Adviser

Paraplanner

Actuarial Analyst

Finance Manager

Compliance Consultant

Consultant

Company Secretary

Business Analyst

Business Adviser

Auditor

(After you've graduated, specialist vocational training or postgraduate study may be required to enter some of these professions).

COURSES

- BA (Hons) Accounting
- BA (Hons) Accounting with Corporate Finance
- BA (Hons) Financial Services
- BA (Hons) Accounting and Finance (Advanced Entry)



www.napier.ac.uk/do-finance

UNDERGRADUATE ENTRY REQUIREMENTS

	YEAR 1 ENTRY			YR 2 ENTRY	YR 3 ENTRY
	SQA (standard)	SQA (minimum) [†]	A-level		
BA (Hons) Accounting (N400)	BBBB	BCCC	BCC	✓	✓
BA (Hons) Accounting with Corporate Finance (N4N3)					
BA (Hons) Financial Services [#] (N340)					
BA (Hons) Accounting and Finance (Advanced Entry) (NN43)	N/A	N/A	N/A	N/A	✓

✓ Entry into a later year is possible; for example with specific college qualifications, please check the course-specific webpage for full details www.napier.ac.uk/do-finance.

[#] Placement available.

Some courses are available for part-time study. Please check the course-specific webpage.

[†] Access for all
 Applicants that meet our Widening Access policy will be given an offer based on our minimum entry requirements. Please check your eligibility at www.napier.ac.uk/UG-entry

Coming from college
 For specific HNC/HND entry requirements please check the course-specific webpage. To find out more about coming from college please visit www.napier.ac.uk/UG-comingfromcollege

Coming from outside the UK?
 To check your specific country's academic and English language requirements go to www.napier.ac.uk/your-country

ACTING

- **We are the #1 UK modern university for Drama, Dance and Cinematics** (The Complete University Guide 2025) **and a top 10 UK university for drama** (The Daily Mail League Table 2025) **and offer the only combined actor-training and English degree in the UK.**
- We are in the top 5 for teaching in the UK for both Drama and English (National Student Survey 2024).
- Our curriculum develops versatility, intellectual curiosity, entrepreneurialism and leadership, as well as providing a high level of acting and performance training for both stage and screen.



www.napier.ac.uk/do-acting



With us you'll learn from industry-recognised tutors aiming to provide a wide range of experiences alongside vocational training in acting. Our close ties with leading Scottish theatre companies ensure your training is as diverse as it is contemporary. While there is a focus on performance skills, you will also undertake in-depth textual analysis, learn about directing, and gain important skills for working in the business, including budgeting and marketing. Your learning experience will be unique in the UK with an opportunity to present a fully supported show at the world's largest arts festival, the Edinburgh Festival Fringe."

Ian Dunn, Lecturer in Acting.



Edinburgh Napier prepares you for the real world and the hard graft, and I wouldn't be getting the opportunities I currently am without the education I received here. The academic support, on both the acting and English sides of my degree, was brilliant."

Isla Campbell, Actor/Writer. Graduated 2023, BA (Hons) Acting & English.



“

The entire course has been extremely enjoyable. Getting to perform a full run at the Edinburgh Fringe Festival was a highlight. It's just been a fantastic opportunity to perform, learn about the industry, and have the chance to be seen by industry professionals. I can't speak highly enough of the tutors and lecturers: each has a wealth of knowledge in their craft and a passion to pass that knowledge on.”

Jordan Monks, Year 2, BA (Hons) Stage & Screen Acting.

“

You learn about acting, directing and writing and the variety of skills you develop is very useful. One of the best things about the Acting & English degree is the time and flexibility to explore different pathways within drama and find out what you're really passionate about.”

Marli Siu, Actor. Graduated 2016, BA (Hons) Acting & English. Marli Siu is a leading Scottish actress winning 'Best Actress' at the 2021 Scottish BAFTA awards. She was also named a Screen International Star of Tomorrow in 2018 and was nominated for the prestigious Ian Charleson Award. She appeared in the 2022 BBC drama, Everything I Know about Love, and Amazon Prime series Alex Rider.

CAREERS

GET INTO WHAT YOU'RE INTO

Actor

Theatre Director

Creative Producer

Production Manager

Presenter

Arts Administrator

Theatre Stage Manager

Playwright

Artistic Programmer

Box Office Manager

Project Director

Participation Director

Drama Teacher

Journalist

Voice Over Artist

(After you've graduated, specialist vocational training or postgraduate study may be required to enter some of these professions).

COURSES

BA (Hons) Acting & English
BA (Hons) Stage & Screen Acting
(advanced entry)



www.napier.ac.uk/do-acting

UNDERGRADUATE ENTRY REQUIREMENTS

	YEAR 1 ENTRY			YR 2 ENTRY	YR 3 ENTRY
	SQA (standard)	SQA (minimum)†	A-level		
BA (Hons) Acting & English (QW34)	BBCC* (incl. English)	BCCC* (incl. English at Grade C)	CCD* (incl. English at Grade C)	N/A	N/A
BA (Hons) Stage & Screen Acting (advanced entry) (W411)	N/A	N/A	N/A	N/A	✓*

✓ Entry into a later year is possible; for example with specific college qualifications, please check the course-specific webpage for full details www.napier.ac.uk/do-acting.

* Audition is required.

† Access for all
Applicants that meet our Widening Access policy will be given an offer based on our minimum entry requirements. Please check your eligibility at www.napier.ac.uk/UG-entry

Coming from college
For specific HNC/HND entry requirements please check the course-specific webpage. To find out more about coming from college please visit www.napier.ac.uk/UG-comingfromcollege

Coming from outside the UK?
To check your specific country's academic and English language requirements go to www.napier.ac.uk/your-country

BIOLOGICAL SCIENCES

- **We are #1 for teaching in the UK for Biosciences** (National Student Survey 2024) **and a top 10 UK modern university for Biology** (The Guardian University Guide 2025).
- Our courses provide a solid foundation in the biological sciences, building your understanding of key issues and allowing you to specialise if you wish to.
- All courses are taught in an applied way, developing the skills you need to be work-ready on graduation, and are accredited by the Royal Society of Biology, ensuring you gain the subject-specific knowledge employers are looking for.



www.napier.ac.uk/do-science



You will learn in a dynamic environment and be taught by lecturers who are pushing the boundaries of knowledge. Our purpose-built facilities feature the latest equipment, including a confocal microscope and an Aqualab facility for marine research. Some courses include fieldwork experience in a range of different environments and all have a strong emphasis on development of practical skills. Our microplacement scheme offers internship opportunities to gain invaluable work experience.”

Professor Mark Huxham, Teaching and Research in Environmental Biology.

“What I enjoyed most were the people who taught it. The passion of the lecturers for their subject areas was palpable. And I found that Napier highly encouraged discussions and cooperation between its students which nurtured tight-knit class communities who were friendly and approachable, both inside and outside of the classroom.

The course was structured so that we covered a wide range of topics across multiple biological sciences initially before focussing in on our selected subject area. It also covered modules in a range of environmental sciences, and studying these I attained some of the crucial knowledge that my employers were looking for.”

Emma Marriott, Conservation Assistant at the Scottish Seabird Centre, North Berwick. Graduated 2020, BSc (Hons) Animal Biology.



I really enjoy the experience and contacts we gain as we study. All the lecturers have different experience in the world of science and conservation, so they offer us diverse **learning opportunities** and can put us in touch with knowledgeable individuals from across the world to aid our studies and experience as a whole. They have all been fantastic in the support of our learning and growth as students."

Munro Kerr, Year 3, BSc (Hons)
Animal & Conservation Biology.



I enjoy the flexibility of my degree because I had no idea what I wanted to do when I first started. It was really nice to have the option to choose modules that weren't part of a typical path and I figured out what I enjoy the most - Biodiversity and Ecology. **The lecturers really care about the topics they teach, which really matters when you're learning something new. Their passion comes across, which makes it far more interesting. Furthermore, whenever I had a question or didn't understand something, I felt encouraged to ask questions** or send an email after the lecture. They have never gone unanswered!"

Cristina Gabriela Roibu, Year 3, BSc
(Hons) Biological Sciences.

CAREERS

GET INTO WHAT YOU'RE INTO

Research Scientist

Biomedical Scientist

Biotechnologist

Healthcare Scientist

Environmental Consultant

Zoo Keeper

Conservation Manager

Environmental Protection Officer

Science Writer

Academic Researcher

Pharmaceutical Scientist

Ecologist

Fishery Manager

Laboratory Technician

(After you've graduated, specialist vocational training or postgraduate study may be required to enter some of these professions).

COURSES

BSc (Hons) Animal & Conservation Biology

BSc (Hons) Applied Microbiology

BSc (Hons) Biological Sciences

BSc (Hons) Biomedical Science

BSc (Hons) Marine & Freshwater Biology



www.napier.ac.uk/do-science

UNDERGRADUATE ENTRY REQUIREMENTS

	YEAR 1 ENTRY			YR 2 ENTRY	YR 3 ENTRY
	SQA (standard)	SQA (minimum)†	A-level		
BSc (Hons) Animal & Conservation Biology* (CC11)	BBBB (incl. Biology, Human Biology, Chemistry OR Physics)	BBCC (incl. Grade C in a Science - Biology, Human Biology, Chemistry OR Physics)	BCC (incl. Biology, Chemistry, Physics OR Applied Science)	✓	✓
BSc (Hons) Applied Microbiology* (C510)					
BSc (Hons) Biological Sciences* (C121)					
BSc (Hons) Biomedical Science * (B941)					
BSc (Hons) Marine & Freshwater Biology* (C161)					

✓ Entry into a later year is possible; for example with specific college qualifications, please check the course-specific webpage for full details www.napier.ac.uk/do-science.

* Placement available.

† Access for all
Applicants that meet our Widening Access policy will be given an offer based on our minimum entry requirements. Please check your eligibility at www.napier.ac.uk/UG-entry

Coming from college
For specific HNC/HND entry requirements please check the course-specific webpage. To find out more about coming from college please visit www.napier.ac.uk/UG-comingfromcollege

Coming from outside the UK?
To check your specific country's academic and English language requirements go to www.napier.ac.uk/your-country

BUILDING & SURVEYING

- **We are a top 10 UK modern university for Building**
(The Times and Sunday Times Good University Guide 2025).
- All students studying our Surveying courses will have the opportunity to spend their entire third year on a credit-bearing work placement.
- Surveying courses are accredited by the Royal Institution of Chartered Surveyors (RICS). The Architectural Technology course is accredited by the Chartered Institute of Architectural Technologists (CIAT) and the Chartered Institute of Building (CIOB).



www.napier.ac.uk/do-building



Our degrees are highly regarded within the industry and companies approach us to take on our graduates for immediate employment. Many of our students achieve placements with professional surveying firms, national and local building contractors and specialist consultancies. **You'll be taught by staff who have worked in industry and hold RICS, CIAT or COIB membership, and will benefit from access to leading industry software. There are opportunities to take part in relevant fieldwork, and students on our surveying courses can take a credit-bearing work placement module in year three.**

Mike Thomson, Programme Leader, Surveying.



That the course is RICS accredited was a huge factor in my choice of Edinburgh

Napier. Also, the lecturers have industry experience, so you know that your learning will be of real benefit in the real world. The wide variety of topics covered broadened my understanding of other professional areas I'm likely to work with in a future career. The third year placement was a high point, as was my nomination for the Women in Property National Student Awards Programme 2023."

Amy Matteo, Year 4, BSc (Hons) Real Estate Surveying.



“

I feel I have learned so much, including the awareness and skills needed to work in industry. My lecturers supported my learning, and pushed me to further my understanding, so I feel confident about the skills and knowledge I've gained. **One of the most exciting opportunities was visiting China as part of the team that constructed the world's first composite timber and bamboo grid shell which has been put forward for an award.**”

Mark Cawley, Year 4, BSc (Hons) Architectural Technology.

“

Being able to study so many avenues of surveying in the initial years of the course, and then specialising further in the latter years, allowed me to gain invaluable knowledge for my career. **I learnt how all manner of built environment professionals collaborate in the real world. This has given me a more holistic view of different areas of the industry which really prepared me for working at Savills.**”

Chris Smith, Graduate Commercial Surveyor, Savills. Graduated 2022, BSc (Hons) Real Estate Surveying.

CAREERS

GET INTO WHAT YOU'RE INTO

Architectural Technologist

Building Surveyor

Quantity Surveyor

Real Estate Surveyor

Valuation Surveyor

Property Asset Manager

Property Management Surveyor

Development Surveyor

Commercial Agency Surveyor

Construction Project Manager

Chartered Surveyor

Contracts Manager

Construction Cost Manager

Commercial Building Surveyor

(After you've graduated, specialist vocational training or postgraduate study may be required to enter some of these professions).

COURSES

BSc (Hons) Architectural Technology

BSc (Hons) Building Surveying

BSc (Hons) Quantity Surveying

BSc (Hons) Real Estate Surveying



www.napier.ac.uk/do-building

UNDERGRADUATE ENTRY REQUIREMENTS

	YEAR 1 ENTRY			YR 2 ENTRY	YR 3 ENTRY
	SQA (standard)	SQA (minimum)†	A-level		
BSc (Hons) Architectural Technology (K236)	BBBC + National 5 Grade C in Maths	CCCC + National 5 Grade C in Maths	CCC + GCSE Grade C/4 in Maths	✓	✓
BSc (Hons) Building Surveying* (With Work Placement) (K231)				✓	N/A
BSc (Hons) Quantity Surveying* (With Work Placement) (K242)					
BSc (Hons) Real Estate Surveying* (With Work Placement) (N231)					

✓ Entry into a later year is possible; for example with specific college qualifications, please check the course-specific webpage for full details www.napier.ac.uk/do-building.

* Placement available.

Some courses are available for part-time study. Please check the course-specific webpage.

† Access for all
Applicants that meet our Widening Access policy will be given an offer based on our minimum entry requirements. Please check your eligibility at www.napier.ac.uk/UG-entry

Coming from college
For specific HNC/HND entry requirements please check the course-specific webpage. To find out more about coming from college please visit www.napier.ac.uk/UG-comingfromcollege

Coming from outside the UK?
To check your specific country's academic and English language requirements go to www.napier.ac.uk/your-country

BUSINESS & MANAGEMENT

- **We are a top 10 UK modern university for Business, Management and Marketing** (The Times/Sunday Times Good University Guide 2025).
- Our courses are developed in line with employers' needs to ensure you have the applied knowledge to make you highly employable.
- Our on-campus courses are flexible, allowing you to focus on specialist areas and explore possibilities for a joint degree.



www.napier.ac.uk/do-business

“ Studying any of our business and management programmes will give you an excellent grounding for what's ahead. Our courses offer great flexibility and choice – you can choose a work placement, study abroad, or take specialist modules. **International Business Management students spend the third year of their programme studying abroad. Bright Red Triangle, our business incubator, supports innovation and enterprise among students, staff and local businesses, so it's a great place to develop ideas and connections.**”

Dr Sarah Sholl, Programme Director, Business School.



“ I like the different varieties of module topics that are offered which really allows you to tailor your studies and has given me a more independent and personalised experience. **My favourite aspect of the University is the people: all the staff, lecturers and students are very welcoming and kind. It's making my experience very enjoyable.**”

Samrat Khatri Chhetri, Year 3, BA (Hons) Business Management with Entrepreneurship.



“

I chose Edinburgh Napier because of the expansive module choices that

I could select from during my course. And what I'm enjoying the most is the positive learning environment. **I have been pushed out of my comfort zone, which has been good for me, allowing me to learn more while also gaining confidence in myself.**”

Niall Monon, Year 4, BA (Hons) Business Management with Marketing.

“

My programme within The Business School gave me the freedom to choose my modules

and build knowledge in the topics that interest me the most, as well as helping me in building my business. **Edinburgh Napier was my first choice because it ranked higher for modern practices, had the most interesting course structure, and Craiglockhart as a campus is hard to match!**”

Lu Castello, Year 4, BA (Hons) Business Management with Human Resource Management.

CAREERS

GET INTO WHAT YOU'RE INTO

Graduate Trainee

Commercial Officer

Business Entrepreneur

Human Resources Adviser

Recruitment Consultant

Pensions Adviser

Sustainability Manager

Fraud Adviser

Pensions Consultant

Fund Accountant

Management Consultant

Project Manager

Business Adviser

Risk Manager

Financial Consultant

International Marketing Manager

(After you've graduated, specialist vocational training or postgraduate study may be required to enter some of these professions).

COURSES

BA (Hons) Business Management

BA (Hons) Business Management
with Entrepreneurship

BA (Hons) Business Management
with Human Resource Management

BA (Hons) Business Management
with Marketing

BA (Hons) International Business
Management

BA (Hons) Intercultural Business
Communication & Marketing
Management

BA (Hons) Intercultural Business
Communication & Tourism
Management



www.napier.ac.uk/do-business

UNDERGRADUATE ENTRY REQUIREMENTS

	YEAR 1 ENTRY			YR 2 ENTRY	YR 3 ENTRY
	SQA (standard)	SQA (minimum)†	A-level		
BA (Hons) Business Management* (N200)	BBBB	BCCC	BCC	✓	✓
BA (Hons) Business Management with Entrepreneurship* (N2N1)					
BA (Hons) Business Management with Human Resource Management* (N2NP)					
BA (Hons) Business Management with Marketing* (N2N5)					
BA (Hons) International Business Management* (N1R2)				✓	N/A
BA (Hons) Intercultural Business Communications & Marketing Management* (N801)	BBBC	BCCC	CCC	✓	N/A
BA (Hons) Intercultural Business Communications & Tourism Management* (N802)	BBBC	BCCC	CCC	✓	N/A

✓ Entry into a later year is possible; for example with specific college qualifications, please check the course-specific webpage for full details www.napier.ac.uk/do-business.

‡ Placement available.

Some courses are available for part-time study. Please check the course-specific webpage.

† Access for all
Applicants that meet our Widening Access policy will be given an offer based on our minimum entry requirements. Please check your eligibility at www.napier.ac.uk/UG-entry

Coming from college
For specific HNC/HND entry requirements please check the course-specific webpage. To find out more about coming from college please visit www.napier.ac.uk/UG-comingfromcollege

Coming from outside the UK?
To check your specific country's academic and English language requirements go to www.napier.ac.uk/your-country

COMPUTING

- **We are the #1 UK modern university for Computer Science**

(The Times/Sunday Times Good University Guide 2025).

- Our diverse range of degree programmes are at the forefront of emerging and exciting industries and will equip you for professional roles that are in high demand across a wide variety of sectors.
- We have some of the most impressive computing lab facilities of any UK university and you'll be taught by staff who are industry experts.



www.napier.ac.uk/do-computing



You'll be taught by world leading specialists and professors who are industry experts and gain first-hand industry experience before you graduate. We pride ourselves on our one-year paid work placement and study abroad options. Our facilities include a dedicated games development lab, specialist digital media and sound facilities, alongside a range of platforms and technologies for cloud-based virtualisation and security environments. The Sensorium is a high spec UX lab including eye tracking and facial expression analysis software. Our creative courses range across Sound Design to User Experience and Digital Media, while our Cybersecurity and Forensics course is certified by the National Cyber Security Centre – the first undergraduate course in the UK to achieve this. All our computing courses give you the practical skills needed by industry and freedom to pursue your own path.”

Dr Peter Chapman, Head of Computer Science.



I chose Edinburgh Napier because it has an excellent reputation for its computer science and software engineering programmes. What I'm most appreciating is the practical nature of the curriculum: not just learning theories and concepts but actively applying them to real-world projects, which is key to understanding

how software development works in practice. **The tutors are really knowledgeable and supportive, always willing to help and to clarify things – it's a supportive and inclusive academic environment.”**

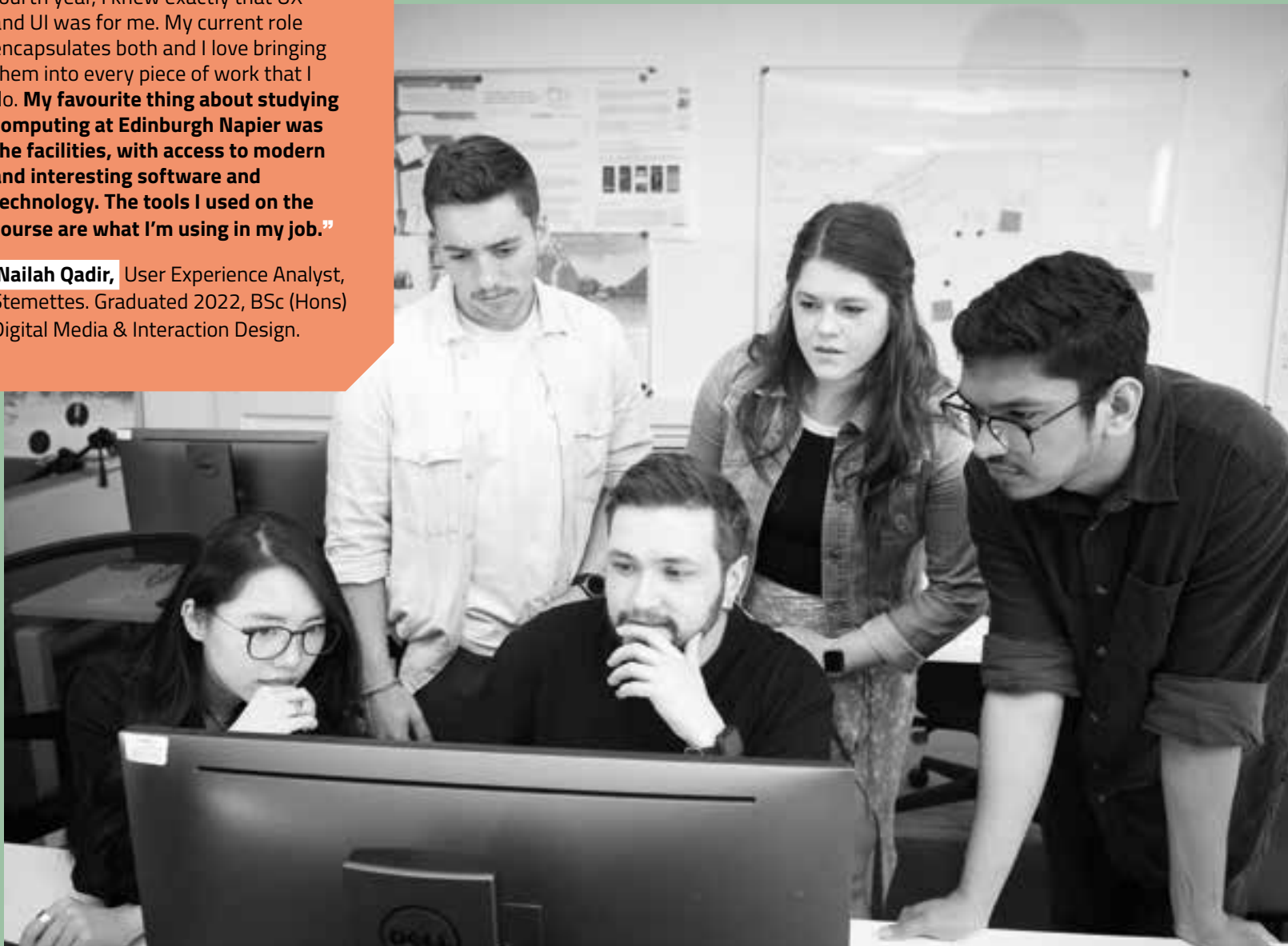
Oleksandr Beichuk, Year 2, BEng (Hons) Software Engineering.



“

I would definitely recommend studying here; I was given the opportunity to develop my interests and grow a passion for something that I had no idea about! By fourth year, I knew exactly that UX and UI was for me. My current role encapsulates both and I love bringing them into every piece of work that I do. **My favourite thing about studying computing at Edinburgh Napier was the facilities, with access to modern and interesting software and technology. The tools I used on the course are what I'm using in my job.**”

Nailah Qadir, User Experience Analyst, Stemettes. Graduated 2022, BSc (Hons) Digital Media & Interaction Design.



CAREERS

GET INTO WHAT YOU'RE INTO

Software Developer

Cybersecurity Analyst

User Interface Designer

Front-end Engineer

Artificial Intelligence Specialist

Software Analyst

User Experience Researcher

2D/3D Animator

Augmented Reality Engineer

Game Designer and Developer

Web Developer

Digital Service Manager

Business Analyst

Network Engineer

Sound Designer

Interactive Audio Designer

(After you've graduated, specialist vocational training or postgraduate study may be required to enter some of these professions).

COURSES

BSc (Hons) Animation for Games

BSc (Hons) Computer Science / Computer Science (Artificial Intelligence)

BEng (Hons) Computing

BEng (Hons) Cybersecurity & Forensics

BSc (Hons) Data Science

BSc (Hons) Digital Media & Interaction Design

BSc (Hons) Games Development

BEng (Hons) Network Engineering & Cybersecurity

BEng (Hons)/MEng Software Engineering

BSc (Hons) Sound Design

BSc (Hons) User Experience (UX) Design

BSc (Hons) Web Design & Development



www.napier.ac.uk/do-computing



“

I am enjoying the collaboration within the course, bouncing ideas off of my peers and generating new ideas with others. Going to New York for the professional internship module made me realise how important sound design is within user experience and let me work with students from the US, creating contacts for future endeavours. **The academic support I have received through the course has been amazing. I also appreciate the mental health support you can access at Napier, which has been very beneficial for me.**”

Keri Kilbride, Year 4, BSc (Hons) Sound Design.

UNDERGRADUATE ENTRY REQUIREMENTS

	YEAR 1 ENTRY			YR 2 ENTRY	YR 3 ENTRY
	SQA (standard)	SQA (minimum)†	A-level		
BSc (Hons) Animation for Games (Top Up) (G444)	BBBB to incl. at least one of Design and Manufacture, Art & Design, Media, Music, Photography, Graphic Communication	BBCC to incl. at least one of Design and Manufacture, Art & Design, Media, Music, Photography, Graphic Communication	BCC to incl. at least one of Design & Technology: Product Design, Art & Design, Music, Photography, Media, Graphic Communication, Moving Image Arts	✓	✓
BEng (Hons) Network Engineering & Cybersecurity* (H602)	BBBC + National 5 Grade C in Maths	BCCC + National 5 Grade C in Maths	CCC + GCSE Grade C/4 in Maths	✓	✓
BSc (Hons) Computer Science* (I101)	BBBB (incl. Maths OR Science/ Technical subject at Grade B) + National 5 Grade C in Maths	BBCC (incl. Maths OR Science/Technical subject at Grade B) + National 5 Grade C in Maths	BCC (incl. Maths OR Science/Technical subject at Grade B) + GCSE Grade C/4 in Maths	✓	N/A
BSc (Hons) Computer Science* (Artificial Intelligence) (I105)					
BEng (Hons) Computing* (G401)	BBBC + National 5 Grade C in Maths (incl. Lifeskills)	CCCC + National 5 Grade C in Maths (incl. Lifeskills)	CCC + GCSE Grade C/4 in Maths	✓	✓
BEng (Hons) Cybersecurity & Forensics* (GG57)	ABBB + National 5 Grade C in Maths	BBCC + National 5 Grade C in Maths	BBC + GCSE Grade C/4 in Maths	✓	✓
BSc (Hons) Data Science* (G445)	BBBB (incl. Maths OR Physics) + National 5 Grade C in Maths	BBCC (incl. Grade B in Maths OR Physics) + National 5 Grade C in Maths	BCC (incl. Maths OR Physics) + GCSE Grade C/4 in Maths	✓	✓
BSc (Hons) Digital Media & Interaction Design* (G455)	BBBB (incl. at least one of Design and Manufacture, Art & Design, Media, Music, Photography, Graphic Communication)	BBCC (incl. at least one of Design and Manufacture, Art & Design, Media, Music, Photography, Graphic Communication)	BCC (incl. at least one of Design & Technology, Product Design, Art & Design, Music, Photography, Media, Graphic Communication, Moving Image Arts)	✓	✓
BSc (Hons) Games Development* (G443)	BBBB + National 5 Grade C in Maths	BBCC + National 5 Grade C in Maths	BCC + GCSE Grade C/4 in Maths	✓	✓

	YEAR 1 ENTRY			YR 2 ENTRY	YR 3 ENTRY
	SQA (standard)	SQA (minimum)†	A-level		
BEng (Hons) Software Engineering* (G600)	BBBB + National 5 Grade C in Maths	BBCC + National 5 Grade C in Maths	BCC + GCSE Grade C/4 in Maths	✓	✓
MEng Software Engineering* (G603)	ABBB (incl. Maths)	ABCC / BBBC (incl. Maths)	BBC (incl. Maths)	N/A	N/A
BSc (Hons) Sound Design* (5G7B)	BBBB (incl. at least one of Design & Manufacture, Art & Design, Music, Music Technology, Photography, Media or Graphic Communication) + National 5 Grade C in Maths	BBCC (incl. at least one of Design & Manufacture, Art & Design, Music, Music Technology, Photography, Media OR Graphic Communication) + National 5 Grade C in Maths	BCC (incl. Art and Design & Technology, Product Design, Fine Art, Music, Music Technology OR Performing Arts) + GCSE Grade C/4 Maths	✓	✓
BSc (Hons) User Experience* (UX) Design (I104)	BBBC + National 5 Grade C in Maths	BCCC + National 5 Grade C in Maths	CCC + GCSE Grade C/4 Maths		
BSc (Hons) Web Design & Development* (7Y7X)	BBBC + National 5 Grade C in Maths	BCCC + National 5 Grade C in Maths	CCC + GCSE Grade C/4 Maths		

✓ Entry into a later year is possible; for example with specific college qualifications, please check the course-specific webpage for full details www.napier.ac.uk/do-computing.

Science, technology or maths subjects: Biology, Chemistry, Physics, Psychology, Engineering Science, Computing, Information Technology, Software Systems Development, Digital Technology, Maths or other science.

* Placement available.

† Access for all

Applicants that meet our Widening Access policy will be given an offer based on our minimum entry requirements. Please check your eligibility at www.napier.ac.uk/UG-entry

Coming from college

For specific HNC/HND entry requirements please check the course-specific webpage. To find out more about coming from college please visit www.napier.ac.uk/UG-comingfromcollege

Coming from outside the UK?

To check your specific country's academic and English language requirements go to www.napier.ac.uk/your-country

CRIMINOLOGY, PSYCHOLOGY & SOCIOLOGY

- **We are a top 5 UK modern university for Psychology** (The Times/Sunday Times Good University Guide 2025) **and are ranked in the top ten in the UK for teaching in Psychology** (National Student Survey 2024).
- **We are a top 5 UK modern university for Sociology** (The Complete University Guide 2025).
- Study in a multidisciplinary school where programmes are informed by our staff's active research in the fields of criminology, social sciences and psychology.



www.napier.ac.uk/do-soc



Study criminal behaviour (criminology), understand society, culture and human interaction (sociology), or gain insight into individuals and their unique behaviour (psychology), through these exciting and relevant areas of study. All of these subjects explore a broad range of sociological, psychological, cultural, and political issues. **You'll develop a range of practical, intellectual and transferable skills, including psychological or social research methods, group working, communication, critical thinking and problem solving. We offer Scotland's longest established degree programme in Policing and Criminology.**

Dr Christine Haddow, Programme Leader and Lecturer in Criminology.



I chose to study at Edinburgh Napier because it offered me the ability to study a wide range of subjects instead of just one discipline. **Being able to develop my understanding in areas I am interested in with the support of tutors has been amazing, and the mixed approach to subjects and research methods has allowed me to learn in a way that suits me. I've found tutors will go above and beyond to help us.**

Eilidh Gough, Year 4, BA (Hons) Social Sciences.



The environment created by the lecturers was great. I found the courses interesting and the tutors approachable. I made great

connections and really enjoyed the Sighthill campus. I still frequently use the content that I learned through my degree studies in my work. I believe my experience at Edinburgh Napier helps me to think dynamically and from a more analytical perspective, which allows me to better support those I work with.”

Kirsty Galloway, Independent Domestic Abuse Advocate (Women’s Aid East and Midlothian). Graduated 2018, BA (Hons) Criminology.



I’ve really enjoyed the Psychology course due to the range of interesting topics, including forensic and educational psychology, that are covered. **It is a friendly environment and the lecturers are always happy to help you. I would recommend studying here to anyone looking to be part of a close-knit supportive learning community.”**

Tabitha James, Year 4, BSc (Hons) Psychology.

CAREERS

GET INTO WHAT YOU’RE INTO

Police Officer

Probation Officer

Prison Officer

Teacher

Social Worker

Youth Worker

International Development Consultant

Life Coach

Pollster

Counsellor

Psychologist

Social Researcher

Policy Analyst

Marketing Insight Manager

Human Resources Officer

(After you’ve graduated, specialist vocational training or postgraduate study may be required to enter some of these professions).

COURSES

BA (Hons) Criminology

BSc (Hons) Policing & Criminology

BA (Hons) or BSc (Hons) Psychology

BA (Hons) Psychology with Sociology

BA (Hons) Social Sciences



www.napier.ac.uk/do-soc

UNDERGRADUATE ENTRY REQUIREMENTS

	YEAR 1 ENTRY			YR 2 ENTRY	YR 3 ENTRY
	SQA (standard)	SQA (minimum)†	A-level		
BA (Hons) Criminology (M900)	BBBB (incl. English or other literary subject°)	BBCC (incl. Grade C in English or other literary subject°)	BCC (incl. English or other literary subject°)	N/A	N/A
BA (Hons) Psychology* (C800)	BBBB (incl. English or other literary subject°) + National 5 Grade C in Maths	BBCC (incl. Grade B in English or other literary subject°) + National 5 Grade C in Maths	BCC (incl. English or other literary subject°) + GCSE Grade C/4 in Maths	N/A	N/A
BSc (Hons) Psychology* (C801)					
BA (Hons) Psychology with Sociology (CL84)	BBBC (incl. Grade B in English or other literary subject°) + National 5 Grade C in Maths	BBCC (incl. Grade B in English or other literary subject°) + National 5 Grade C in Maths	CCC (incl. English or other literary subject°) + GCSE Grade C/4 in Maths	✓	N/A
BA (Hons) Social Sciences (LC38)	BBBB (incl. English or other literary subject°)	BBCC (incl. Grade B in English or other literary subject°)	BCC (incl. English or other literary subject°)	✓	✓
BSc (Hons) Policing & Criminology* (M901)				✓	N/A

✓ Entry into a later year is possible; for example with specific college qualifications, please check the course-specific webpage for full details www.napier.ac.uk/do-soc.

° Literary subjects include: Modern Studies, History, Geography, Psychology, Sociology, RMPS, ESOL Grade A. A-level literary subjects include Modern Studies, History, Geography, Psychology, Sociology, RMPS, Government and Politics, Classical Civilisation.

‡ Placement available.

† Access for all

Applicants that meet our Widening Access policy will be given an offer based on our minimum entry requirements. Please check your eligibility at www.napier.ac.uk/UG-entry

Coming from college

For specific HNC/HND entry requirements please check the course-specific webpage. To find out more about coming from college please visit www.napier.ac.uk/UG-comingfromcollege

Coming from outside the UK?

To check your specific country's academic and English language requirements go to www.napier.ac.uk/your-country

DESIGN & PHOTOGRAPHY

- **We are a top 5 UK modern university for Film Production and Photography** (The Guardian University Guide 2025) **and a top 10 UK modern university for Art and Design** (The Times/Sunday Times Good University Guide 2025).
- Our programmes are at the leading edge of creativity while our excellent industry contacts ensure your learning is as contemporary as it is relevant.
- Our multi disciplinary academic staff and industry-based practitioners will help you to develop the professional knowledge and critical thinking skills to succeed.



www.napier.ac.uk/do-design



“Our courses are supported by designated studio spaces, workshops and a specialist photography facility, as well as excellent computing facilities with industry-standard software. We offer opportunities to gain experience on live projects with clients like the National Museum of Scotland and you'll benefit from partnerships, placement and mentoring opportunities through our alumni and industry networks. Our connections with many of the UK's best design agencies and professional photographers mean you'll be work-ready when you graduate.”

Dr Matt Sinclair, Programme Leader, Graphic Design.



“I started on an entirely different course, but after walking past the design studios I switched to product design; it felt like this was the course I belonged on. **It gave me the creative freedom to follow what I was passionate about in design, and to develop a well-rounded portfolio of my interests upon graduation, ready for employment.** The course is led by great tutors who both nurture and challenge you to deliver your best.”

Jasmine Nicholson, Model Maker, Bjarke Ingels Group (BIG) Architecture. Graduated 2022, BDes (Hons) Product Design.



Edinburgh Napier felt like a close-knit community, which meant I built strong connections

with my colleagues, lecturers and the technicians. The range of lecturers, each with their own unique perspective, really gave my education a fresh and diverse perspective. What made the course stand out for me was how hands-on it was – practical learning and technical skills development. I gained extensive experience with various types of cameras, including medium format digital, which is a requirement for my current role.”

Laura Prieto, Photography Assistant, Digitisation Team, National Galleries of Scotland. Graduated 2018, BA (Hons) Photography.



Our students have had recent successes in the RSA Student Design Awards, YCN, D&AD New Blood Awards, Jill Todd Photographic Award and Sony World Photography Awards.



Currently I’m a print magazine designer but I’m also heavily involved in a lot of digital design aspects within the company. **My university experience definitely put in the foundations which helped me bag a job just before my graduation. If you don’t have a clear career path in mind, the course provides a great taster for different pathways within the industry.”**

Adele Juraza, Designer, Beer52.com/ freelance designer. Graduated 2019, BDes (Hons) Graphic Design.

CAREERS

GET INTO WHAT YOU’RE INTO

Graphic Designer

UX Designer

Motion Graphics Designer

Packaging Designer

Interior Designer

Spatial Designer

Museum & Exhibition Designer

Product Designer

Industrial Designer

Design Researcher

Brand Consultant

Design Manager

Commercial Photographer

Fine Art Photographer

Documentary Photographer

Advertising Creative

(After you’ve graduated, specialist vocational training or postgraduate study may be required to enter some of these professions).

COURSES

BA (Hons) Photography

BDes (Hons) Graphic Design

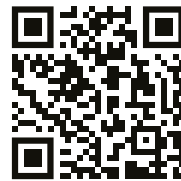
BDes (Hons) Interior & Spatial Design

BDes (Hons) Product Design

BSc (Hons) Digital Media & Interaction Design

BSc (Hons) Sound Design

BSc (Hons) User Experience (UX) Design



www.napier.ac.uk/do-design

UNDERGRADUATE ENTRY REQUIREMENTS

	YEAR 1 ENTRY			YR 2 ENTRY	YR 3 ENTRY
	SQA (standard)	SQA (minimum)†	A-level		
BA (Hons) Photography* (W640)	BBBC*	BCCC*	CCC*	✓*	✓*
BDes (Hons) Graphic Design* (W210)	BBBC* Preferred subjects: Art and Design OR Design and Manufacture. We can also accept Creative Thinking as part of the Daydream Believers project	BCCC* Preferred subjects: Art and Design OR Design and Manufacture. We can also accept Creative Thinking as part of the Daydream Believers project	CCC* Preferred subjects Art and Design/Design and Technology: (Product Design)	✓*	✓*
BDes (Hons) Interior & Spatial Design* (W251)					
BDes (Hons) Product Design* (W241)					
BSc (Hons) Digital Media & Interaction Design* (G455)	BBBB (incl. at least one of Design and Manufacture, Art & Design, Media, Music, Photography, Graphic Communication, Design and Manufacture) + National 5 Grade C in English	BBCC (incl. at least one of Design and Manufacture, Art & Design, Media, Music, Photography, Graphic Communication, Design and Manufacture) + National 5 Grade C in English	BCC (incl. at least one of Design & Technology: Product Design, Art & Design, Music, Photography, Media, Graphic Communication, Moving Image Arts) + GCSE Grade C/4 in English	✓	✓
BSc (Hons) Sound Design* (5G7B)	BBBB (incl. at least one of Design and Manufacture, Art & Design, Music, Music Technology, Photography, Media or Graphic Communication) + National 5 Grade C in Maths (incl. Lifeskills) & English	BBCC (incl. at least one of Design and Manufacture, Art & Design, Music, Music Technology, Photography, Media or Graphic Communication) + National 5 Grade C in Maths (incl. Lifeskills) & English	BCC (incl. Art and Design & Technology; Product Design, Fine Art, Music, Music Technology or Performing Arts) + GCSE Grade C/4 in English & Maths	✓	✓
BSc (Hons) User Experience (UX) Design* (I104)	BBBC + National 5 Grade C in Maths (incl. Lifeskills) & English	BBCC + National 5 Grade C in Maths (incl. Lifeskills) & English	CCC + GCSE Grade C/4 Maths & English	✓	✓

✓ Entry into a later year is possible; for example with specific college qualifications, please check the course-specific webpage for full details www.napier.ac.uk/do-design

* Entry requirements also include a portfolio of creative work. We will send full details after receiving your UCAS application.

‡ Placement available.

† Access for all

Applicants that meet our Widening Access policy will be given an offer based on our minimum entry requirements. Please check your eligibility at www.napier.ac.uk/UG-entry

Coming from college

For specific HNC/HND entry requirements please check the course-specific webpage. To find out more about coming from college please visit www.napier.ac.uk/UG-comingfromcollege

Coming from outside the UK?

To check your specific country's academic and English language requirements go to www.napier.ac.uk/your-country

ENGINEERING

- We are the **#1 UK modern university for Mechanical Engineering** and a **top 5 UK modern university for Civil Engineering** (The Times/Sunday Times Good University Guide 2025). We are also a **top 5 UK modern university for Energy Engineering** (The Daily Mail League Table 2025).
- Strong industry links ensure our programmes are highly relevant and up to date, providing professional insight and crucial knowledge for success.
- Our courses are fully accredited by the leading engineering, transport and energy related institutions and organisations.



www.napier.ac.uk/do-engineering



“Your studies will focus on engineering practices, computing skills and principles of design relating to a wide range of civil, mechanical, electrical and electronic, and energy systems. You will learn how to integrate your knowledge of mathematics, science, information technology, design and management and apply it to solve complex engineering problems. **You'll learn in purpose-built specialist labs with industry-relevant equipment, and with work placements an intrinsic part of every course, you'll gain valuable industry experience too.**”

Dr Debbie Meharg, Associate Professor, School of Computing, Engineering & the Built Environment.

“The staff are fantastic, the facilities are great, and it's a really welcoming environment. I really enjoyed my time studying here. If you don't know what industry you want to go into, then mechanical engineering is a really good area to study because it's the most varied and broad of the engineering subjects. You get a split between classroom-based activities and practical work that really helps to bring course content to life, and I think that's preparing me well for a career.”

Jordan McCormick, Year 4, BEng (Hons) Mechanical Engineering.



“

I was drawn to the Energy & Environmental Engineering course here because it was different

to what other universities offered.

The course provides a broad range of theoretical and practical knowledge about mechanics, energy systems, building services, maths, management, product design and so much more. There are amazing lecturers with plenty of professional experience who are always ready to help and support you.”

Andrea Garcia Sanchez, Year 4,
BEng (Hons) Energy & Environmental
Engineering.

“

Edinburgh Napier offers a unique course which combines civil and transportation

engineering in an MEng programme. **I gained a range of skills through field and laboratory experiments and industry experience work. In addition, I was able to study abroad in the USA and The Netherlands during my third year. The diverse range of course options allowed me to learn and prepare for working in various roles within the construction industry.”**

Ammar Ibrahim, Civil Engineer.
Graduated 2019, MEng (Hons) Civil &
Transportation Engineering.

CAREERS

GET INTO WHAT YOU'RE INTO

Aerospace Engineer

Transport Engineer

Product Designer

Mechanical Engineer

Engineering Analyst

Civil Engineer

Power Engineer

Marine Engineer

Geotechnical Engineer

**Renewable Energy
Consultant**

Electronics Engineer

Energy Engineer

Infrastructure Manager

Electrical Engineer

Utilities Engineer

**International Engineering
Consultant**

(After you've graduated, specialist vocational training or postgraduate study may be required to enter some of these professions).

COURSES

BEng (Hons) Civil Engineering

MEng Civil Engineering

MEng Civil & Transportation Engineering

BEng (Hons) Energy & Environmental Engineering

BEng (Hons) Electrical & Electronic Engineering

MEng Electrical & Electronic Engineering

BEng (Hons) Mechanical Engineering

MEng Mechanical Engineering



www.napier.ac.uk/do-engineering

UNDERGRADUATE ENTRY REQUIREMENTS

	YEAR 1 ENTRY			YR 2 ENTRY	YR 3 ENTRY
	SQA (standard)	SQA (minimum)†	A-level		
BEng (Hons) Civil Engineering (H203)	BBBB (incl. Maths)	BCCC (incl. Maths)	BCC (incl. Maths)	✓	✓
BEng (Hons) Electrical & Electronic Engineering* (H606)	BBBB (incl. Maths AND a science subject (excl. Biology) OR technical subject °)	BCCC (incl. Maths AND a science subject (excl. Biology) OR technical subject °)	BCC (incl. Maths AND a science subject (excl. Biology) OR technical subject °)		
BEng (Hons) Energy & Environmental Engineering (HJ69)					
BEng (Hons) Mechanical Engineering (H300)					
MEng Civil Engineering (H202)	ABBB (incl. Grade B in Maths)	BBBC (incl. Grade B in Maths)	BBC (incl. Maths)		
MEng Civil & Transportation Engineering (H290)					
MEng Electrical & Electronic Engineering* (H6H0)	ABBB (incl. Maths AND a science subject (excl. Biology) OR technical subject °)	BBBC (incl. Grade B in Maths AND a science subject (excl. Biology) OR technical subject °)	BBC (incl. Maths and a science subject (excl. Biology) OR technical subject °)		
MEng Mechanical Engineering (H301)					

✓ Entry into a later year is possible; for example with specific college qualifications, please check the course-specific webpage for full details www.napier.ac.uk/do-engineering.

Some courses are available for part-time study. Please check the course-specific webpage.

° Science and Technical subjects include: SQA Higher - Physics, Engineering Science, Design & Manufacture, Chemistry, Environmental Science, Graphic Communication, Computing Science; A-Level - Physics, Chemistry, Design & Technology, Environmental Science.

Placement available.

† Access for all

Applicants that meet our Widening Access policy will be given an offer based on our minimum entry requirements. Please check your eligibility at www.napier.ac.uk/UG-entry

Coming from college

For specific HNC/HND entry requirements please check the course-specific webpage. To find out more about coming from college please visit www.napier.ac.uk/UG-comingfromcollege

Coming from outside the UK?

To check your specific country's academic and English language requirements go to www.napier.ac.uk/your-country

ENGLISH

- **We are the #1 UK modern university for English** (The Times/Sunday Times Good University Guide 2025), **and we are ranked in the top 5 for teaching in the UK for English** (National Student Survey 2024).
- Our courses build an understanding of the way literature and film foster better engagement with the modern world, with opportunities to take options in creative writing, TV studies and much more.
- Study topics from classic literature to contemporary film, poetry and drama to graphic novels and popular genres, and gain the skills that will prepare you for a career in a range of cultural and creative industries.



www.napier.ac.uk/do-english



“You will learn in dynamic and engaging ways on our programmes, interpreting writing, film, and other narrative media and discussing the cultural issues they are concerned with. **Our modules offer you opportunities to produce a wide range of forms of assessment in addition to traditional essays, such as blogs, video essays, creative pieces, and reflective responses. You can gain extra experience through study abroad schemes at universities in countries such as Canada, and the chance on final year module Crime in Text and Film to participate in an award-winning partnership with the Scottish Prison Service to enhance literacy.**”

Dr Emily Alder, Associate Professor in Literature and Culture.

“The tutors and academic support staff are what make this course outstanding. The lecturers are so well versed within their subject fields and learning about their passions is so inspiring. Lectures and tutorials are transformed into a space of laughter and sharing of ideas, and learning becomes personal and organic; something that I feel is unquestionably very ‘Napier’ in ethos. The cultivating and shaping of our creative voices demonstrates the lecturers’ unwavering support of students as individuals, helping each of us to grow, and has made me feel seen, heard, and most importantly understood.”

Molly Walker, Year 2, BA (Hons) English.



“ I found the module options really varied and interesting. I also experienced a lot that I might not have chosen myself, such as film-based modules, certain genres of literature and authors. It really developed me as a communicator and, I think, improved my listening skills. Research skills have also been really important in all of my jobs since I graduated and I gained a really strong foundation in those on the course.”

Lucy Crabb, Information Officer,
National Library of Scotland.
Graduated 2020, BA (Hons) English.

“ Working with English & Film students as well as Acting & English students has given me a broader understanding of the different mechanisms utilised within the Humanities and Arts, allowing me to see a wider variety of careers and roles just through conversations and perspectives in lectures and tutorials. **The conversations I've had with staff have been extremely helpful and motivational. Every time I have reached out for support I have always been met with such consideration and helpful advice. I really enjoy the flexibility and creative freedom we get when picking our modules to fine-tune things into something we will individually enjoy. This transfers to the assessment briefs as well, as they're open-ended, and allows us to explore our creativity in an honest and engaging way. It's helped me gain confidence in my own writing abilities.**”

Zara Khan, Year 4, BA (Hons) English.

CAREERS

GET INTO WHAT YOU'RE INTO

Teacher

Journalist

Writer

Records Manager

Academic Librarian

Arts Administrator

Publisher

Copy Editor

Digital Copywriter

Editorial Assistant

Film Producer

Scriptwriter

Marketing Manager

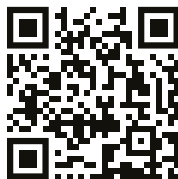
Press Officer

Corporate Blogger

(After you've graduated, specialist vocational training or postgraduate study may be required to enter some of these professions).

COURSES

- BA (Hons) Acting & English
- BA (Hons) English
- BA (Hons) English & Film



www.napier.ac.uk/do-english

UNDERGRADUATE ENTRY REQUIREMENTS

	YEAR 1 ENTRY			YR 2 ENTRY	YR 3 ENTRY
	SQA (standard)	SQA (minimum)†	A-level		
BA (Hons) Acting & English (QW34)	BBCC* (incl. English at Grade B)	BCCC* (incl. English at Grade C)	CCD* (incl. English at Grade C)	√*	N/A
BA (Hons) English (Q300)	ABBB (incl. English at Grade B)	BBBC (incl. English at Grade B)	BBC (incl. English)	N/A	N/A
BA (Hons) English & Film (QP33)					

* Audition is required.

† Access for all
Applicants that meet our Widening Access policy will be given an offer based on our minimum entry requirements. Please check your eligibility at www.napier.ac.uk/UG-entry

Coming from college
For specific HNC/HND entry requirements please check the course-specific webpage. To find out more about coming from college please visit www.napier.ac.uk/UG-comingfromcollege

Coming from outside the UK?
To check your specific country's academic and English language requirements go to www.napier.ac.uk/your-country

FILM, JOURNALISM & MEDIA

- **We are a top 5 UK modern university for Film Production and Photography and a top 10 UK university for Journalism** (The Guardian University Guide 2025).
- **We are a top 5 UK modern university for Communication and Media Studies** (The Complete University Guide 2025).
- Our industry-relevant courses provide in-depth knowledge and hands-on experience to prepare you for a career in the film, media and creative sectors.



www.napier.ac.uk/do-media



“With the right tools at your disposal to put your creative thinking into action, our courses ensure you gain all the technical know-how and capabilities to get ahead. **Our specialist facilities with industry-standard equipment include everything from professional level radio and TV studios to editing suites and Mac laboratories. You'll work on live briefs with a range of creative media partners and through our wide network of industry contacts we will help you to find placements in your chosen field.**”

Damien Swarbrick, Lecturer in Film Practice and Television.

“I have loved having so much hands-on experience with state of the art equipment. The practical workshops and creative elements of the course really allow students to express themselves and the academic support is great. I feel my writing skills have improved massively as well as my knowledge of the film industry as a whole.”

Emma Leask, Year 2, BA (Hons) Film.



Mass Communications is a brilliant course: it's modern, you get to learn skills you can use

in everyday life or in a future career, and you get to dip your toes into lots of different aspects, including podcasting, blogging, and social media. You get to try everything out and then by third year you can specialise. I loved the Social Media and Analytics module, which is one of the Journalism modules. You really get to incorporate your interests into the courses."

Sarah McIntosh, Year 4, BA (Hons) Mass Communications.



What I enjoyed the most is how practical and creative this course is. It helped me to get hands-on experience as well as dive into the different realms of the media industry. During my studies I completed numerous internships at the local news studios in Edinburgh, and also had the opportunity to go on an exchange programme at the University of Missouri's School of Journalism. The course has offered me a wide range of transferrable skills useful in any industry and I'm planning to pursue a career in investigative or crime journalism."

Oleksandra Gumeniuk, BA (Hons) Journalism, graduated 2023.

CAREERS

GET INTO WHAT YOU'RE INTO

Journalist

Screenwriter

Researcher

TV Producer

Production Designer

Cinematographer

Editor

Sound Designer

Curator

Picture Editor

TV Presenter

Video Archivist

Content Editor

Multimedia Manager

Film Producer

Freelance Photographer

Communications Manager

(After you've graduated, specialist vocational training or postgraduate study may be required to enter some of these professions).

COURSES

BSc (Hons) Digital Media & Interaction Design

BA (Hons) English & Film

BA (Hons) Film

BA (Hons) Journalism

BA (Hons) Marketing with Digital Media

BA (Hons) Mass Communications

BA (Hons) Mass Communications, Advertising & Public Relations

BA (Hons) Photography

BA (Hons) Television (advanced entry)



www.napier.ac.uk/do-media

UNDERGRADUATE ENTRY REQUIREMENTS

	YEAR 1 ENTRY			YR 2 ENTRY	YR 3 ENTRY
	SQA (standard)	SQA (minimum)†	A-level		
BSc (Hons) Digital Media & Interaction Design (G455)*	BBBB (incl. at least one of Design and Manufacture, Art & Design, Media, Music, Photography, Graphic Communication, Design and Manufacture) + National 5 Grade C in English	BBCC (incl. t least one of Design and Manufacture, Art & Design, Media, Music, Photography, Graphic Communication, Design and Manufacture) + National 5 Grade C in English	BCC (incl. at least one of Design & Technology: Product Design, Art & Design, Music, Photography, Media, Graphic Communication, Moving Image Arts) + GCSE Grade C/4 in English	✓	✓
BA (Hons) English & Film (QP33)	ABBB (incl. English at Grade B)	BBBC (incl. English at Grade B)	BBC (incl. English)	N/A	N/A
BA (Hons) Film (P303)	AABB* (incl. English or other literary subject °)	BBCC* (incl. English or other literary subject °)	BBC* (incl. English or other literary subject °)	N/A	N/A
BA (Hons) Journalism* (P500)	ABBB (incl. English)	BBCC (incl. Grade B in English)	BBC (incl. Grade C in English or other literary subject)	✓	✓
BA (Hons) Marketing with Digital Media* (N5P3)	BBBC	BCCC	CCC	N/A	N/A
BA (Hons) Mass Communications* (W121)	BBCC (incl. English or other literary subject °)	CCCC (incl. English or other literary subject °)	CCD (incl. English or other literary subject °)	✓	✓
BA (Hons) Mass Communications, Advertising & Public Relations* (W123)					
BA (Hons) Television (Advanced Entry)* (P301)	N/A	N/A	N/A	N/A	✓
BA (Hons) Photography (W640)	BBBC*	BCCC*	CCC*	✓*	✓*

✓ Entry into a later year is possible; for example with specific college qualifications, please check the course-specific webpage for full details www.napier.ac.uk/do-media.

° Literary subjects include: Modern Studies, History, Psychology, RMPS, Latin, Sociology, Theology, Media Studies, Politics, Classics, Philosophy, Geography, A Level Government and Politics, A-level Classical Civilisation, A-level Drama.

* Portfolio required.

‡ Placement available.

† Access for all

Applicants that meet our Widening Access policy will be given an offer based on our minimum entry requirements. Please check your eligibility at www.napier.ac.uk/UG-entry

Coming from college

For specific HNC/HND entry requirements please check the course-specific webpage. To find out more about coming from college please visit www.napier.ac.uk/UG-comingfromcollege

Coming from outside the UK?

To check your specific country's academic and English language requirements go to www.napier.ac.uk/your-country

LAW

- **We are a top 5 UK modern university for Law**

(The Times/Sunday Times Good University Guide 2025).

- Our courses are accredited by the Law Society of Scotland and provide a broad foundation in the law of Scotland, enabling you to seek qualification as a solicitor in Scotland or pursue a wide variety of other options.
- Our graduates are employed at some of Scotland's leading law firms and organisations, including the Crown Office and Procurator Fiscal Service.



www.napier.ac.uk/do-law



The lecturers within our small and friendly department have a wide range of sector-relevant experience, and you will study all the subjects required by the Law Society of Scotland to enable you to seek qualification as a solicitor. Our law clinic – an entirely student-run organisation supported by Anderson Strathern – provides free legal advice to the public and is accredited by the Faculty of Advocates Free Legal Services Unit. It provides opportunities to advise real clients.”

Professor Richard Whitecross,
Head of Subject.



The time I have spent at Edinburgh Napier University has been so enjoyable. **From the campus staff and facilities to meeting fellow students, it has been a fantastic place to study law. I have been offered countless opportunities, such as the Law Clinic, and been provided with great support during my time here. Ultimately, I could not have asked for a better experience.”**

Josh Binnington, Year 4, LLB (Hons)



““

I loved the range of optional modules we were offered on top of the traditional Scots

law classes. I always felt supported by the lecturers – they were always on hand to answer any questions or just to provide moral support and encouragement. Getting to study in the capital of Scotland is an experience I will forever be grateful for. Particularly for law students, you will be studying in the home of the Supreme Courts of Scotland and the Scottish Parliament.”

Corrin Frances Miller, Associate (Corporate), CMS. Graduated 2019, LLB (Hons).

““

I chose Edinburgh Napier because I thought this would be the perfect

environment to learn and grow. It is also inclusive and diverse, welcoming everyone from any background which I think is extremely important. I have really enjoyed interacting and sharing ideas with my peers and the lecturers are enthusiastic about teaching, which really helps me stay motivated.”

Helena Christiansen, Year 3, LLB (Hons).

CAREERS

GET INTO WHAT YOU'RE INTO

Criminal Lawyer

Intellectual Property Lawyer

Advocate

Civil Servant

Employment Lawyer

Company Secretary

Construction Lawyer

Data Protection Manager

Insolvency Practitioner

Family Lawyer

King's Counsel

Corporate Lawyer

Trading Standards Officer

Commercial Property Lawyer

Competition and Markets Authority Lawyer

(After you've graduated, specialist vocational training or postgraduate study may be required to enter some of these professions).

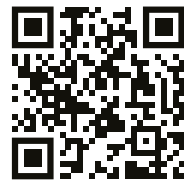
COURSES

LLB (Hons)

LLB Graduate Entry

Completion of the LLB (Ordinary or Honours) is **stage one** of qualifying as a solicitor in Scotland.

Stage two is the Diploma in Professional Legal Practice (DPLP also known as Professional Education and Training Stage 1 or PEAT 1) currently offered by six universities in Scotland



www.napier.ac.uk/do-law

UNDERGRADUATE ENTRY REQUIREMENTS

	YEAR 1 ENTRY			YR 2 ENTRY	YR 3 ENTRY
	SQA (standard)	SQA (minimum)†	A-level		
LLB (Hons) (M114)	ABBB (incl. one of: English, Latin, History, Law, Philosophy, Modern Studies, Government & Politics, Geography, Psychology, Sociology and RMPS). ESOL can be accepted as required subject at Grade A only	BBCC (incl. one of: English, Latin, History, Law, Philosophy, Modern Studies, Government & Politics, Geography, Psychology, Sociology and RMPS). ESOL can be accepted as required subject at Grade A only	BBC (incl. to include one of: English, Latin, History, Law, Philosophy, Modern Studies, Government & Politics, Geography, Psychology, Sociology and RMPS)	N/A	N/A
LLB Graduate Entry (M100)	N/A	N/A	N/A	✓	N/A

✓ Entry into a later year is possible; for example with specific college qualifications, please check the course-specific webpage for full details www.napier.ac.uk/do-law.

† Access for all

Applicants that meet our Widening Access policy will be given an offer based on our minimum entry requirements. Please check your eligibility at www.napier.ac.uk/UG-entry

Coming from college

For specific HNC/HND entry requirements please check the course-specific webpage. To find out more about coming from college please visit www.napier.ac.uk/UG-comingfromcollege

Coming from outside the UK?

To check your specific country's academic and English language requirements go to www.napier.ac.uk/your-country

MARKETING

- Study cutting-edge marketing theory and get connected to practice through placements and our strong industry links.
- You'll explore different aspects of marketing and gain the business and creative skills you need for a career in this exciting sector.
- Many of our courses are accredited by the Institute of Data and Marketing (IDM) and by the Chartered Institute of Marketing (CIM).



www.napier.ac.uk/do-marketing



“Our dynamic curriculum means your learning is up to date, while our strong ties to industry give you access to people currently working in the field. Our staff either have first-hand industry experience or are research-led, and they work with our computing colleagues to ensure you are being taught by the experts for the digital media side of your course. Placements are a vital part of our courses and you'll have the opportunity to undertake a six-month work placement during trimester two of your third year, as well as opportunities to study abroad.”

Professor Anna Watson,
Head of Subject.

“I have thoroughly enjoyed the modules that embraced creativity and provided opportunities to explore diverse avenues of digital content creation, storytelling, and strategic marketing techniques. **In my final year, my dissertation supervisor provided me with valuable feedback and guidance throughout the process, and I truly believe that his mentoring pushed my work further, enriched by his experience and expertise in the field.**”

Álvaro de la Torre Lázaro, Year 4, BA (Hons) Marketing with Digital Media.



“

The interactive courses and the practical learning opportunities made

my course an incredibly rewarding and enjoyable experience. The professors and tutors encouraged active participation and engagement and I found it a great combination of theory and practical skills. **The time to undertake a work placement was definitely a great advantage and I received job offers due to the fact that I had previous work experience through it.**”

Whitney Branch, Go-to-Market Specialist / Brand Specialist for Fossil Group. Graduated 2021, BA (Hons) Marketing with Digital Media.

“

I would highly recommend this course which combines professional and

academic experiences. **As a dyslexic student who struggles with exams, I found the innovative assessments one of the greatest advantages, as many of them are centred around more practical formats, such as reports and video submissions.** And these practical skills are important for a placement or the live project option in your penultimate year.”

Eilidh Muir, Year 4, BA (Hons) Marketing Management.

CAREERS

GET INTO WHAT YOU'RE INTO

Media Buyer

Advertising Director

Digital Communications Officer

Business Development Manager

Marketing Executive

Sponsorship Manager

Head of Sales

Brand Manager

Digital Marketing Co-ordinator

Market Researcher

Copywriter

Account Executive

International Marketing Manager

Web and Content Editor

Digital Analyst

(After you've graduated, specialist vocational training or postgraduate study may be required to enter some of these professions).

COURSES

BA (Hons) Intercultural Business Communication & Marketing Management*

BA (Hons) Marketing Management

BA (Hons) Marketing with Digital Media

BA (Hons) Business Management with Marketing

BA (Hons) International Festival Event Management and Marketing

* no accreditation



www.napier.ac.uk/do-marketing

UNDERGRADUATE ENTRY REQUIREMENTS

	YEAR 1 ENTRY			YR 2 ENTRY	YR 3 ENTRY
	SQA (standard)	SQA (minimum)†	A-level		
BA (Hons) Intercultural Business Communication & Marketing Management* (N801)	BBBC	BCCC	CCC	✓	N/A
BA (Hons) Marketing Management* (N500)	BBBC	BCCC	CCC	✓	✓
BA (Hons) Marketing with Digital Media* (N5P3)				N/A	N/A
BA (Hons) Business Management with Marketing* (N2N5)	BBBB	BCCC	BCC	✓	✓
BA (Hons) International Festival & Event Management and Marketing* (N801)	BBBC	BCCC	CCC	✓	N/A

✓ Entry into a later year is possible; for example with specific college qualifications, please check the course-specific webpage for full details www.napier.ac.uk/do-marketing

Placement available.

† Access for all
Applicants that meet our Widening Access policy will be given an offer based on our minimum entry requirements. Please check your eligibility at www.napier.ac.uk/UG-entry

Coming from college
For specific HNC/HND entry requirements please check the course-specific webpage. To find out more about coming from college please visit www.napier.ac.uk/UG-comingfromcollege

Coming from outside the UK?
To check your specific country's academic and English language requirements go to www.napier.ac.uk/your-country

MUSIC

- **We are a top 10 UK modern university for Music** (The Guardian University Guide 2025 and Complete University Guide 2025).
- Follow pathways that reflect your specialist interests in performance, composition, production, or areas such as education, management and research.
- Develop your creative and scholarly intentions with music as the primary medium for exploration and expression across a wide range of genres.



www.napier.ac.uk/do-music



Delivered by a diverse range of industry and research-experienced lecturers, our innovative, practical teaching will give you critical insight into the music industries. You will explore music in practical and contextual perspectives and domains to develop your practical, analytical, and critical thinking skills and gain experience in performance. We have outstanding facilities and the latest industry-relevant software. We're also one of the few music departments in the UK to offer an undergraduate module in Music Therapy."

Renée Stefanie, Lecturer and Programme Leader.



I saw this course about three years before applying and knew straight away it was my first option. I'd heard a lot of great things about it, as well as about the University. It has really opened my mind to a plethora of music and the concepts behind it. I've been thrown into a world of possibilities I had never explored, especially when it came to performance and composition. And I've met the most amazing, talented people!"

Rosie Sullivan, Year 3, BA (Hons) Music.



The course is giving me a taste of many different areas of the music industry, while allowing me to specialise and grow in the areas I want to pursue further. **As a drummer, I've found the performance classes very important. The skills I'm learning are extremely helpful for creating better performances but, more importantly, it allows networking with other students on a personal and musical level. I've found that's helped me to develop my own style as I learn how I play with other people.**"

James Kealy, Year 2, BA (Hons) Music.



As someone who came to writing music pretty late, **my time at Edinburgh Napier gave me my first chance to really explore composition with some great tuition and performance opportunities.**"

Anna Meredith MBE, Composer. One of the most established British composers of her generation, Anna has won many awards and much acclaim for her innovative work straddling the different worlds of contemporary classical, art pop, electronica, sonic installations and film scoring. She was awarded an MBE for services to music in 2019.

CAREERS

GET INTO WHAT YOU'RE INTO

Performer

Composer

Songwriter

Musicologist

Music Therapist

Radio Producer

Music Teacher

Instrumental Tutor

Artist Manager

Producer

Audio Engineer

Arts Administrator

Foley Artist

A&R Coordinator

Music Distribution Manager

Tour Manager

Session Musician

(After you've graduated, specialist vocational training or postgraduate study may be required to enter some of these professions).

COURSES

BA (Hons) Music



www.napier.ac.uk/do-music



This course creates its own strong music scene/community in Edinburgh. I still work and connect with fellow students from it. I chose it because it offered more variety than other courses and loved the diversity of projects I was able to participate in. I primarily studied composition, but I was also in several bands and involved with other departments of the creative campus. The lecturers genuinely care, and guidance was always available whether that was regarding sound engineering, instrument technique, performing etiquette or advice on creative well-being.”

Bethany Anderson, Producer, songwriter and performer, Graduated 2020, BA (Hons) Music.

UNDERGRADUATE ENTRY REQUIREMENTS

	YEAR 1 ENTRY			YR 2 ENTRY	YR 3 ENTRY
	SQA (standard)	SQA (minimum)†	A-level		
BA (Hons) Music (W303) ‡	ABBB* (incl. English or a literary subject °)	ABCC* (incl. English or a literary subject °)	BBC* (incl. English or a literary subject °)	√*	√*

√ Entry into a later year is possible; for example with specific college qualifications, please check the course-specific webpage for full details www.napier.ac.uk/do-music.
 ° Literary subjects include Modern Studies, History, Psychology, RMPS, Latin, Sociology, Theology, Media Studies, Politics, Classics, Philosophy, Geography, A-level Government and Politics, A-level Classical Civilisation, A-level Drama.
 ‡ Placement available.
 * Audition is required.

† Access for all
 Applicants that meet our Widening Access policy will be given an offer based on our minimum entry requirements. Please check your eligibility at www.napier.ac.uk/UG-entry

Coming from college
 For specific HNC/HND entry requirements please check the course-specific webpage. To find out more about coming from college please visit www.napier.ac.uk/UG-comingfromcollege

Coming from outside the UK?
 To check your specific country's academic and English language requirements go to www.napier.ac.uk/your-country

NURSING & MIDWIFERY

- **We are a top 10 UK modern university for Nursing** (The Times/ Sunday Times Good University Guide 2025) **and our Midwifery course ranks in the top 10 for teaching in the UK** (National Student Survey 2024).
- In Scotland, we are the only provider of all four fields of nursing (Adult, Child, Learning Disabilities, Mental Health) and midwifery.
- We provide a vibrant teaching environment for over 2,500 students, ensuring you gain the skills and qualifications needed to become a Nursing and Midwifery Council registrant when you graduate.



www.napier.ac.uk/do-nursing



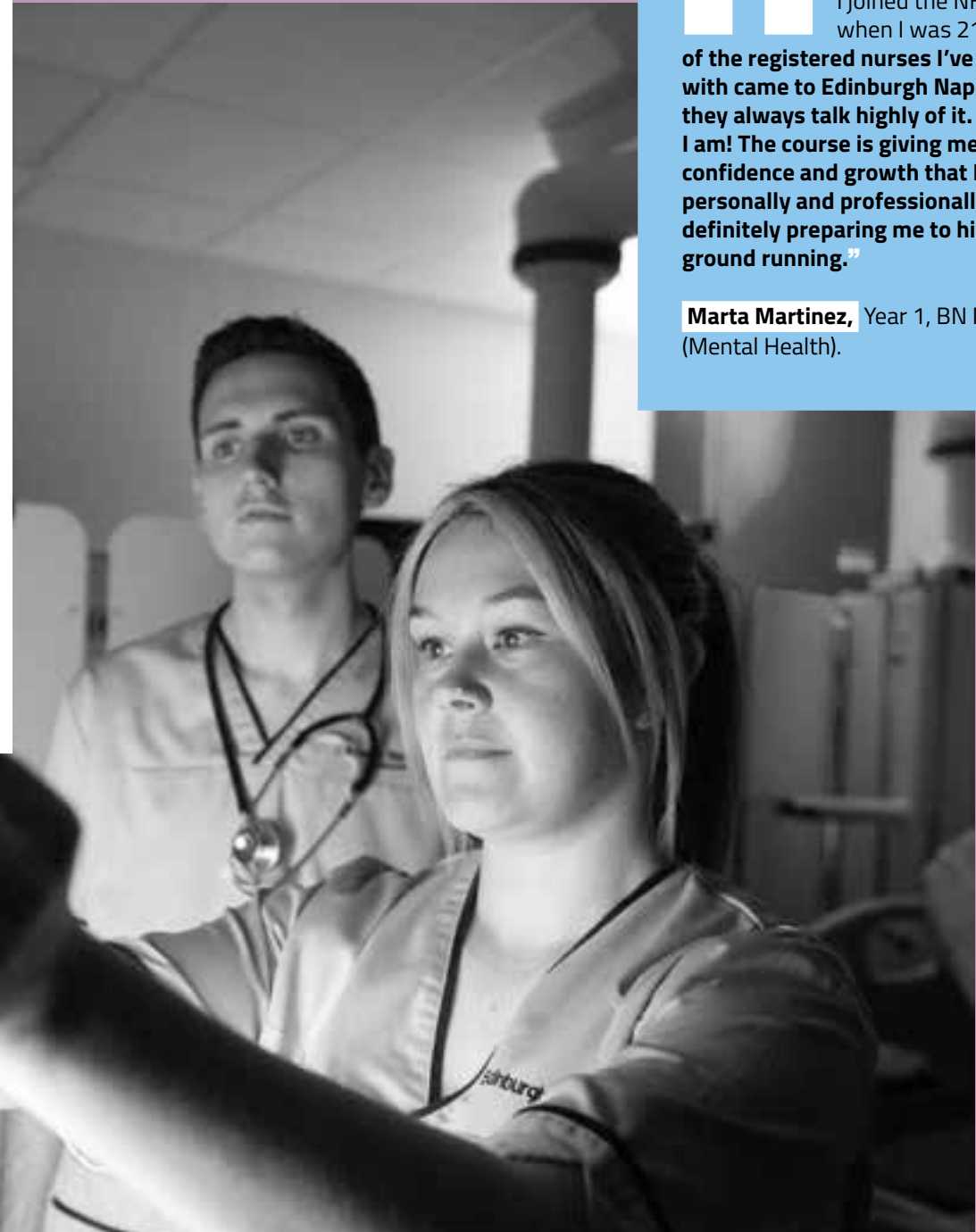
We offer a nursing programme which covers the full fields of practice, so you can apply to be a nursing student in mental health, learning disabilities, adult health or child health. If you are interested in becoming a midwife, we also offer a Bachelor of Midwifery programme. **Edinburgh Napier boasts an excellent purpose-built Simulation and Clinical Skills Centre, run by a specialist team of health professionals. It covers several practice areas – from community and critical care to general and labour wards. These facilities will help you gain experience relevant to all employers. Plus, our links with local healthcare providers can provide placements where you can put theory into practice in the real world.**

Stuart Martin, Lecturer (and Mental Health Nurse).



I've always wanted to look after people, and I joined the NHS when I was 21. **Most of the registered nurses I've worked with came to Edinburgh Napier and they always talk highly of it. So here I am! The course is giving me the confidence and growth that I need, personally and professionally. It is definitely preparing me to hit the ground running.**

Marta Martinez, Year 1, BN Nursing (Mental Health).





My university experience was the perfect starting point for my career.

I ended up getting a job on one of the wards where I had previously been on placement. I'm currently a Staff Nurse on an inpatient surgical ward at the Royal Hospital for Children and Young People.

The Sighthill campus is a great place to learn, with lots of study space and the clinical skills centre. The mixture of placement time and academic studies meant you could see how the theory and skills translated to the real-world healthcare environment."

Chelsea Oliphant, Staff Nurse, NHS Lothian. Graduated 2020, Bachelor of Nursing (Child Health).



Edinburgh Napier was my only choice when it came to applying for university – as Scotland's biggest provider of training for Midwifery it just made sense! The teaching staff are very supportive and understand the constraints of managing theory work and a placement at the same time. I've learned to not underestimate my power as a student midwife, and the importance of my work – it feels special to say that I'm training to be a midwife here."

Ella Bendall, Year 2, BM Midwifery.

CAREERS

GET INTO WHAT YOU'RE INTO

Staff Nurse

Community Learning Disability Nurse

Midwife

Neonatal Staff Nurse

Charge Nurse

Health Visitor

School Nurse

District Nurse

Community Mental Health Nurse

Clinical Nurse Specialist

Sexual Health Nurse

Delivery Suite Co-ordinator

Infection Control Nurse

Clinical Nurse Manager

Advanced Nurse Practitioner

Addiction Nurse

Lecturer

(After you've graduated, specialist vocational training or postgraduate study may be required to enter some of these professions).

COURSES

BN Nursing (Adult)

BN Nursing (Child Health)

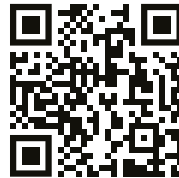
BN Nursing (Learning Disabilities)

BN Nursing (Mental Health)

BM Midwifery

POST-QUALIFICATION COURSES

BSc Nursing Studies



www.napier.ac.uk/do-nursing

UNDERGRADUATE ENTRY REQUIREMENTS

	YEAR 1 ENTRY***			YR 2 ENTRY	YR 3 ENTRY
	SQA (standard)	SQA (minimum)†	A-level		
BN Nursing* (Adult) (B740)	BBC (preferably incl. English or other literary subject° AND a science subject°°) + National 5 Grade C in Maths + National 5 Grade C in English AND a Science (if not studied at Higher)	BCC (preferably incl. English or other literary subject° AND a science subject°°) + National 5 Grade C in Maths + National 5 Grade C in English AND a Science (if not studied at Higher)	BC (preferably incl. English or other literary subject° AND a science subject°°) + GCSE Grade C/4 in Maths + GCSE Grade C/4 in English AND a Science (if not studied at A-Level)	N/A	N/A
BN Nursing* (Child Health) (B731)					
BN Nursing* (Learning Disabilities) (B761)					
BN Nursing* (Mental Health) (B760)					
BM Midwifery* (B720)	BBBC (incl. English AND Biology OR Human Biology) + National 5 Grade C in Maths	BBCC (incl. English AND Biology OR Human Biology) + National 5 Grade C in Maths	BCC (incl. Biology, Life & Health Sciences OR Applied Science AND a literary subject°) + GCSE Grade C/4 in Maths + GCSE Grade C/4 in English (if not studied at A-Level)		
BSc Nursing Studies* (Top Up)	You will be required to be a registered nurse or have a relevant health or social care qualification. On entering the programme, you will be allocated advanced standing based on existing qualifications/education. To check the equivalence of your qualification or experience, email shortcourses@napier.ac.uk				

- ° Literary subjects include: English/English Literature, History, Modern Studies, Religious, Moral & Philosophical Studies/Christian Theology, Psychology, Geography, Sociology, Health and Social Care, Law.
- °° Science subjects include: Biology / Human Biology, Chemistry, Physics.
- *** All of the nursing courses require completion of the computer based Confident Caring Assessment (CCA) in addition to school qualifications
- ‡ All courses have compulsory placements.

† Access for all
 Applicants that meet our Widening Access policy will be given an offer based on our minimum entry requirements. Please check your eligibility at www.napier.ac.uk/UG-entry

Coming from college
 For specific HNC/HND entry requirements please check the course-specific webpage. To find out more about coming from college please visit www.napier.ac.uk/UG-comingfromcollege

Coming from outside the UK?
 To check your specific country's academic and English language requirements go to www.napier.ac.uk/your-country

SPORT & EXERCISE SCIENCES

- We have exclusive partnerships with Scottish FA, Scottish Rugby and Scottish Gymnastics and helped to found the Mountain Bike Centre of Scotland.
- We are the biomechanics partner for the R&A, the governing body of golf for most of the world.
- Our environmental chamber is the largest facility of its kind in Scotland, and can replicate high-altitude conditions.



www.napier.ac.uk/do-sport

“Whether you want to help sufferers of long-term illnesses keep moving or train elite athletes, we have courses to suit anyone passionate about the subject. **Our exclusive partnerships with elite sport organisations ensure that what you learn in the classroom – from lecturers who are also coaches – is at the cutting edge of sports science. You’ll use our specialist facilities from Year 1, helping you gain essential skills to make an impact, while through volunteering and work-based learning opportunities you can test your knowledge and experience in a real working environment.**”

Margarida Dias-Scoon,
Lecturer in Biomechanics.



“My placement during my 2nd year was a really valuable opportunity and an unforgettable experience for sure. I have worked with post-stroke survivors to help them recover and maintain a good quality of life. **I really enjoy the practical classes and working in groups, which I feel is developing my team-player skills. Lecturers and tutors are incredibly helpful and I’ve always received feedback and support when I needed it.**”

Liza Seibak, Year 3, BSc (Hons)
Physical Activity and Health.



It's great to be immersed in a subject that I'm interested in. I went to college before I joined

Edinburgh Napier and it was helpful to join this course at the beginning of 2nd year. **What I'm enjoying most is the practical applied aspects, such as how to run physiological tests, and using the specialist equipment and lab facilities. All the staff have been very helpful; you can tell the lecturers are really interested in the material and enjoy teaching it.**

Murdo McNamee, Year 3, BSc (Hons) Sport & Exercise Science.



The practical nature of the course is really important because you're encouraged to

go away and learn how to apply the equipment to different athletes; that element of it really prepares you for the applied environment that most sports science jobs are in. I went straight on to study a masters in Sport Performance Enhancement at Napier, which is when I started looking to build experience in strength and conditioning. I secured an internship at SRU while I was studying and then I was offered this role, and my lecturers were really helpful in supporting me to manage both."

Uti Oussellam, Assistant Strength and Conditioning Coach, Scottish Rugby Union. Graduated 2015, BSc (Hons) Sport & Exercise Science.

CAREERS

GET INTO WHAT YOU'RE INTO

Sports Therapist

Strength and Conditioning Coach

Exercise Physiologist

Performance Director

Personal Trainer

Schools' Activity Co-ordinator

Club Development Officer

Sports Coach

Elite Athlete

Gym Manager

Outdoor Education Manager

Community Coach

Performance Pathways Manager

Health Referral Co-ordinator

(After you've graduated, specialist vocational training or postgraduate study may be required to enter some of these professions).

COURSES

BSc (Hons) Physical Activity & Health

BSc (Hons) Sports Coaching

BSc (Hons) Sport & Exercise Science
(including advanced entry)

BSc (Hons) Football Coaching,
Performance & Development



www.napier.ac.uk/do-sport

UNDERGRADUATE ENTRY REQUIREMENTS

	YEAR 1 ENTRY			YR 2 ENTRY	YR 3 ENTRY
	SQA (standard)	SQA (minimum) [†]	A-level		
BSc (Hons) Physical Activity & Health [‡] (C6C8)	BBBC Including Science : Bio/Human Bio/Chem/ Physics/Psych/PE (cannot accept Environmental Science) + National 5 Grade C in Maths (excl. Lifeskills, Functional Maths Skills Level 2)	BCCC Including Science : Bio/Human Bio/ Chem/ Physics/Psych/PE (cannot accept Environmental Science) + National 5 Grade C in Maths (excl. Lifeskills, Functional Maths Skills Level 2)	CCC (incl. a science subject (Biology, Chemistry, Physics, Psychology, PE, Sports Science & the Active Leisure Industry or Sports Studies) + GCSE Grade C/4 in Maths	✓	✓
BSc (Hons) Sports Coaching (C6R4)					
BSc (Hons) Football Coaching, Performance & Development (C6R5) [°]					
BSc (Hons) Sport & Exercise Science (C600)					

✓ Entry into a later year is possible; for example with specific college qualifications, please check the course-specific webpage for full details www.napier.ac.uk/do-sport.

Some courses are available for part-time study. Please check the course-specific webpage.

[°] In addition to the above academic requirements, specific Scottish FA awards are required. Please see website for full details.

[‡] Placement available.

† Access for all

Applicants that meet our Widening Access policy will be given an offer based on our minimum entry requirements. Please check your eligibility at www.napier.ac.uk/UG-entry

Coming from college

For specific HNC/HND entry requirements please check the course-specific webpage. To find out more about coming from college please visit www.napier.ac.uk/UG-comingfromcollege

Coming from outside the UK?

To check your specific country's academic and English language requirements go to www.napier.ac.uk/your-country

TOURISM, HOSPITALITY, FESTIVAL & EVENT MANAGEMENT

- We are a top 5 UK modern university and a top 10 UK university for Hospitality, Event Management and Tourism

(The Guardian University Guide 2025).

- Studying with us you will benefit from industry-informed teaching and a wealth of experts who we partner with.
- Our visiting professors include leaders in tourism and hospitality and Directors from all the key Edinburgh Festivals.



www.napier.ac.uk/do-tourism



Through our courses you will develop leadership, creativity and management practice skills which will help you to succeed in this dynamic, varied and exciting sector. **You will learn from leading professionals and expert academics, and gain real-world experience with flourishing tourism and hospitality businesses and long-established festivals and events. We offer an optional 24-week work placement on most programmes and there are opportunities to study abroad through international exchanges and work on live projects with local organisations across all subject areas.**

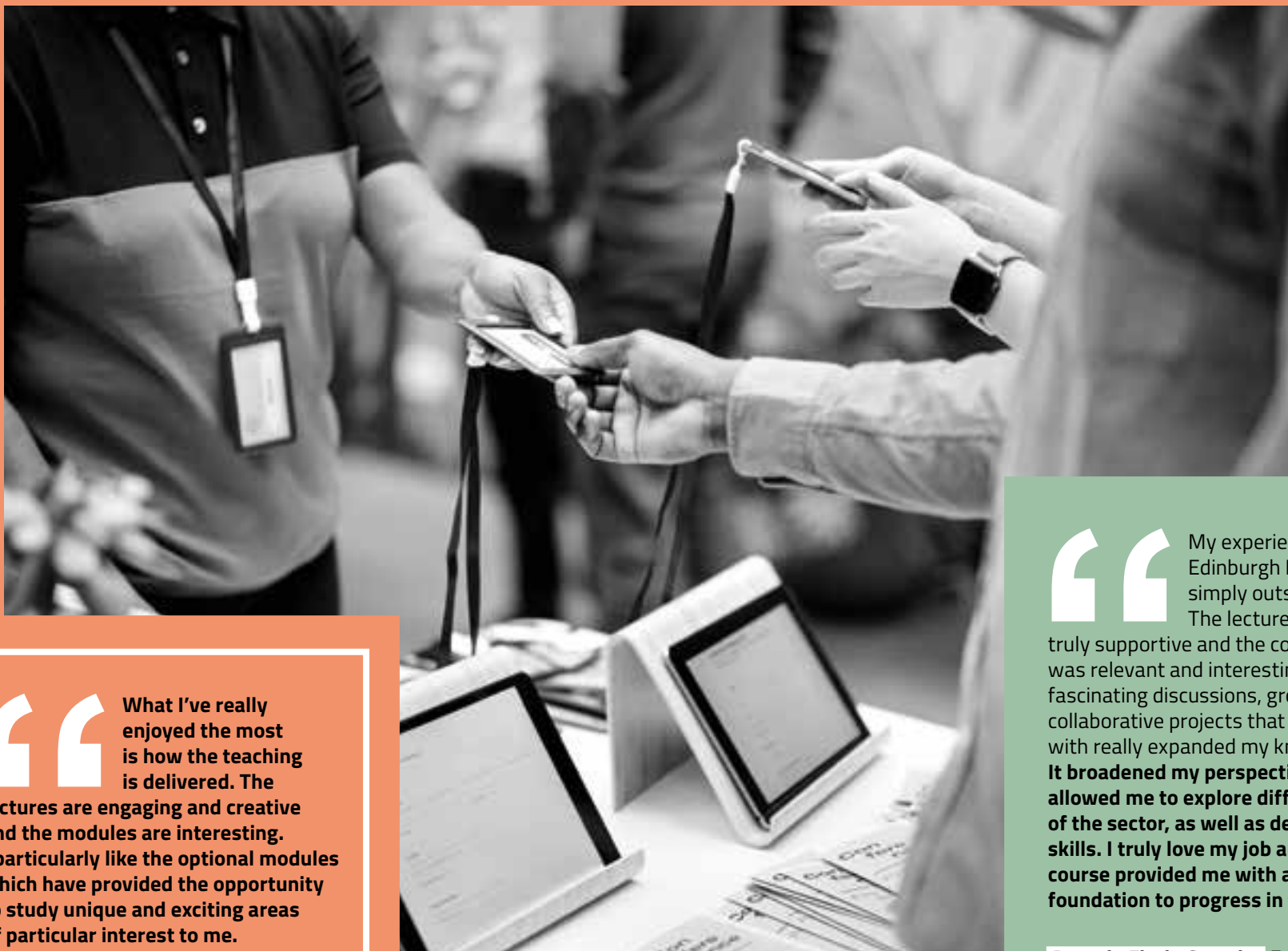
Dr Louise Todd, Interim Head of Subject.



My course gives an insight into many different topics within the event sector and provides a wide breadth of knowledge. **As a multi-faceted degree it allows you to consider a variety of careers within the industry. All the tutors have been very knowledgeable in their subjects, and what I've enjoyed most so far is the practical experience, such as being able to run my first event with my second year group.**

Piero Marcuccilli, BA (Hons) International Festival & Event Management.





What I've really enjoyed the most is how the teaching is delivered. The lectures are engaging and creative and the modules are interesting. I particularly like the optional modules which have provided the opportunity to study unique and exciting areas of particular interest to me.

The lecturers and tutors are extremely kind and supportive, helping you to stay on track which has been a big help to my academic development."

Pooja Choudhary, Year 2, BA (Hons) International Tourism Management.



My experience at Edinburgh Napier was simply outstanding! The lecturers were truly supportive and the content was relevant and interesting. The fascinating discussions, group work and collaborative projects that I was involved with really expanded my knowledge. **It broadened my perspectives, and allowed me to explore different areas of the sector, as well as develop new skills. I truly love my job and feel the course provided me with a strong foundation to progress in this field."**

Antonio Florin Casariu, Front Office Supervisor, Intercontinental Edinburgh The George. Graduated 2022, BA (Hons) International Hospitality Management with Language.

CAREERS

GET INTO WHAT YOU'RE INTO

Festival Director

Head of Programming

Ticketing Manager

Theme Park Manager

Conference Centre Manager

Events Officer

Visitor Experience Consultant

Hotel Manager

Airport Manager

Volunteer Co-ordinator

Tourism Development Officer

Restaurant Manager

Airline Operations Manager

Marketing Manager

Concert Promoter

(After you've graduated, specialist vocational training or postgraduate study may be required to enter some of these professions).

COURSES

BA (Hons) Intercultural Business Communication & Tourism Management

BA (Hons) International Tourism Management

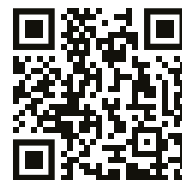
BA (Hons) International Tourism & Airline Management

BA (Hons) International Hospitality Management

BA (Hons) International Hospitality Management and Festival & Events

BA (Hons) International Festival & Event Management

BA (Hons) International Festival Event Management and Marketing



www.napier.ac.uk/do-tourism

UNDERGRADUATE ENTRY REQUIREMENTS

	YEAR 1 ENTRY			YR 2 ENTRY	YR 3 ENTRY
	SQA (standard)	SQA (minimum)†	A-level		
BA (Hons) Intercultural Business Communications & Tourism Management* (N802)	BBBC	BCCC	CCC	✓	N/A
BA (Hons) International Festival & Event Management and Marketing*					
BA (Hons) International Festival & Event Management* (N820)	BBBC	BCCC	CCC	✓	✓
BA (Hons) International Hospitality Management* (N220)					
BA (Hons) International Hospitality Management and Festival & Events* (NN88)					
BA (Hons) International Tourism Management* (N800)					
BA (Hons) International Tourism & Airline Management* (N893)					

✓ Entry into a later year is possible; for example with specific college qualifications, please check the course-specific webpage for full details www.napier.ac.uk/do-tourism.

* Placement available.

† Access for all

Applicants that meet our Widening Access policy will be given an offer based on our minimum entry requirements. Please check your eligibility at www.napier.ac.uk/UG-entry

Coming from college

For specific HNC/HND entry requirements please check the course-specific webpage. To find out more about coming from college please visit www.napier.ac.uk/UG-comingfromcollege

Coming from outside the UK?

To check your specific country's academic and English language requirements go to www.napier.ac.uk/your-country

GRIT GRAFT GUMPTION

MUST BE NAPIER



WHAT YOU NEED TO KNOW

What do I need to apply for the course I want to study?

You'll need qualifications, a personal statement and a reference. For some specific courses you may also need to:

- Come to an interview or audition;
- Submit an art/design portfolio;
- Provide evidence of relevant work or voluntary experience when applying for vocational courses such as Nursing.

If English is not your first language, you will normally need to provide evidence of your English language skills through qualifications or a Secure English Language Test.

We call these our entry requirements.

Students from the UK and Republic of Ireland should apply by the application deadline of 28 January 2026 as applications made after this date cannot always be considered. International applicants should apply as early as possible and by 29 June 2026 at the latest.

What qualifications and grades do I need?

The qualifications or grades you need will vary by course and may also depend on whether you are a widening access student. In this prospectus we list our Year 1 Scottish Higher entry requirements in two ways – our standard and our minimum entry requirements. Both reflect the grades you will need to achieve by the time you enter the University, however, the minimum entry requirements only apply if you are a widening access student.

Example:

BSc (Hons) Biomedical Science

Year 1 Standard Entry Requirement:

BBBB including Human Biology, Biology, Chemistry or Physics

Year 1 Minimum Entry Requirement:

BBCC including Human Biology, Biology, Chemistry or Physics

We also list any specific subjects you must have studied by the time you enter the University to be considered for entry to the programme.

If you have already achieved the entry requirements which apply to you, you may receive an unconditional offer from the University. This means the place is yours if you want it, although there may be other steps you need to complete, such as a Protecting Vulnerable Groups (PVG) check or medical requirements, depending on the course you have applied to. Alternatively, if you need to achieve further qualifications to meet the entry requirements you may receive a conditional offer from the University. These conditions will be the academic qualifications you need to achieve in your current studies to get your place confirmed.

You should also remember that:

- Only Higher Grade C passes or above are counted towards your Higher tally. For Advanced Highers only Grade D or above is counted;
- Where you have achieved an Advanced Higher at Grade D this equates to a B-pass at Higher. An Advanced Higher Grade C or above equates to an A-pass at Higher;
- Unless you are a widening access student, where you apply with both a Higher and Advanced Higher in the same subject, we will only count the subject once, and will use the highest grade (or equivalent grade) achieved when reaching our decision. For widening access applicants we will count all Higher and Advanced Higher grades when calculating a student's achievement, even where these are in the same subject, however, you must have achieved the required grades in a minimum of three different subjects at Higher (or equivalent) in order to qualify for entry;
- The majority of our courses also allow entry directly into year 2 or 3 of study with a relevant HNC or HND qualification. Our course webpages will tell you which qualifications are accepted and any specific grades you are required to achieve within your HNC/D qualification.

Am I a widening access student?

We aim to identify each applicant's full talent and potential, and we look beyond grades to do this as part of our commitment to addressing the current under-representation of certain groups (widening access students) within higher education in Scotland.

We consider you to be a widening access student if you:

- Have spent time in care;
- Are a young carer: young adult carers are people aged 16–25 who care, unpaid, for a family member or friend with an illness or disability, mental health condition or an addiction;
- Have taken part in and receive support from LEAPS, LIFT OFF, Aspire North or Focus West;
- Have completed a Scottish Wider Access Programme (SWAP);
- Are an eligible student within the Schools for Higher Education Programme;
- Have Government recognised refugee or asylum status;
- Live in a target postcode area which identifies you as living in an area of high deprivation (most deprived 20% in Scotland) as defined by the Scottish Index of Multiple Deprivation. Go to simd.scot/#/2020 and enter your postcode to see whether you live in a target postcode area.

If you meet one of the above criteria, the entry requirements that apply to you are our minimum entry requirements, which reflect the minimum academic grades required to succeed on your chosen programme of study.

HOW TO APPLY

Full-time courses

Applying for our full-time undergraduate courses is done through the Universities and Colleges Admissions Service (UCAS) website (ucas.com). You should use the Edinburgh Napier institution code – ENAP E59 – along with the code of the course you'd like to study.

Part-time courses and online courses

Are you a UK student and want to study part-time? Or online? To do this, you'll have to go through our website. Just visit the page of your chosen course and hit the 'apply' button.

www.napier.ac.uk/UG-apply

Got any questions?
We have a great team on hand to help answer your questions about applying and entry requirements, or if you are an international student, you may have questions about visas.

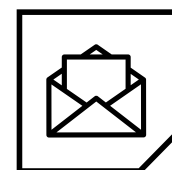
The best way to contact us is through our online enquiry form or by phoning us:

 www.napier.ac.uk/ask

 **+44 (0)333 900 6040**



Applying for September 2026. Applications close 14 January 2026 or 30 June 2026 for international students. UCAS will forward your application on to us.



We will review your qualifications, personal statement and supporting references. Our Admissions policies, which you can find online, provide advice about how we select.
www.napier.ac.uk/UG-applicationadvice



You will receive a response with either an unconditional offer, a conditional offer, or informing you that unfortunately your application has been unsuccessful. We make offers from November to mid-May.

Remember, even if you don't get the grades you need for your first-choice course, Clearing may be an opportunity to find a spot on a similar course. Head to **www.napier.ac.uk/clearing**

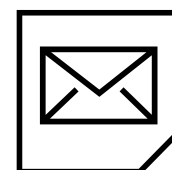


If you receive an offer you will have the opportunity to visit us on campus to learn more about our academics, students and facilities, and get all the information you need to make your decision on our offer. Or if you're overseas, you can talk to our International Team either in your country or online.

Now would be the time to **make Edinburgh Napier your first choice.**



If your offer is conditional, we will confirm your place when your outstanding conditions are met, which could include obtaining certain qualifications.



You will be sent information about your timetable and induction in August before commencing your studies in September.

ALTERNATIVE QUALIFICATIONS



In addition to the qualifications listed in the Study Areas section, we pride ourselves on accepting a wide range of alternative qualifications, including: Approved access courses, Irish Leaving Certificate, International Baccalaureate and Foundation Apprenticeships. To find the entry requirements applicable to you, please check our website.

HNC/HND

A large number of our students choose to go to college and study a range of qualifications before joining us. If you choose to study an HNC or HND qualification and are looking to study the same or similar subject with us, you will generally be able to articulate directly onto your chosen degree programme and be eligible to start in year 2 or year 3. For full details on what HNC/D courses articulate onto our degrees, the grades needed, and all the excellent support we have available, please see our website: www.napier.ac.uk/UG-comingfromcollege

Associate Students

The Associate Student Scheme allows you to study for your HND at one of our partner Colleges while guaranteeing your place at Edinburgh Napier University in third year (conditions apply). As an Associate Student of Edinburgh Napier you have a personal guarantee of a place with us on a number of degree

programmes within other School of Computing, Engineering & the Built Environment and The Business School.

In Computing our partners are Borders College, Dundee & Angus College, Edinburgh College, Fife College, Forth Valley College, and West Lothian College. For Engineering and Built Environment courses our partners are Borders College, Edinburgh College, Fife College, Forth Valley College and West Lothian College. For Business our partner is Edinburgh College. Contact your local partner College to apply for an Associate Student place.

BTEC (Business and Technology Education Council)

Edinburgh Napier accepts BTEC Nationals either as one equivalent qualification or alongside additional A-Levels, depending on the degree and entry requirements. It is normally considered for entry onto a related course and is increasingly gaining popularity as an alternative covering a whole range of academic levels.

Many of our degree programmes accept the BTEC Level 3 Extended Diploma with the standard 18-units being equivalent to three A-Levels.

Applicants should check our website for up-to-date minimum grade requirements for their subject of interest.

Foundation Apprenticeships

Edinburgh Napier accepts applications from students who apply having studied a Foundation Apprenticeship which offer you an excellent opportunity to undertake valuable work-based learning alongside other qualifications. This ensures you gain the necessary skills, knowledge and experience to prepare you for entry.



We will accept the Foundation Apprenticeship for entry to all courses across the University and completion of this qualification would normally, as a minimum, equate to one SQA Higher, although in some subject areas the qualification may receive additional credit towards entry.

Where specific subjects at Higher or National 5 are required for entry to a degree programme, the Foundation Apprenticeship would not ordinarily replace this requirement.

T-Level qualifications

Edinburgh Napier is supportive of T-Level qualifications. The overall grade required for entry may vary depending on the course you

have applied for, however, students will typically be asked to obtain a Merit to gain entry to the majority of our courses, with a Pass (C or above) for courses that ask for CCC at A-level. Please note, if your course requires a specific subject at A-level/Higher you should contact Admissions to confirm your T-Level meets this requirement, prior to submitting your UCAS application.



FEES AND FINANCE



These pages provide fees and funding information but if you need more details please contact us:

www.napier.ac.uk/fees

+44(0) 333 900 6040

www.napier.ac.uk/ask

Student Funding Bodies:

Scotland: www.saas.gov.uk

England: www.gov.uk/student-finance

N. Ireland: www.studentfinancenir.co.uk

Republic of Ireland: www.saas.gov.uk

Wales: www.studentfinancewales.co.uk

Students from Scotland

Fees (full time): If you live in Scotland and satisfy certain residency requirements your tuition fees will normally be paid for you by the Student Awards Agency for Scotland (SAAS). You must apply to SAAS each year to ensure your tuition fees are paid. If you are not eligible for SAAS support fees, tuition fees are currently £1,820 per year.

Fees (part time): If you are studying part time and meet the SAAS eligibility criteria you can apply for a Part-time Fee Grant (PTFG) to help cover the cost of tuition fees each year. The amount you are entitled to is dependent upon the number of credits you are studying and the level.

Living costs (not nursing): To help cover your living costs you may also be eligible for support from SAAS in the form of a bursary and/or Living Cost Loan.

Nursing students: As well as SAAS support to cover tuition fees for all eligible Nursing Students, there is also a non-income assessed bursary totalling £10,000 per year, in addition to additional grants depending on your personal circumstances.

For more information visit the Students Awards Agency for Scotland:

www.saas.gov.uk

Students from UK (outside Scotland) and Republic of Ireland

Fees: If you normally live in England, Northern Ireland, Wales, Channel Islands, Isle of Man or the Republic of Ireland (ROI), you are likely to be assessed as liable to pay the Rest of UK/ROI tuition fee rate, regardless of the subject you are studying. Fees for those starting in 2026 are £9,535 per year. You should NOT have to pay tuition fees up front – you can apply for a tuition fee loan to cover the cost from your relevant student funding body.

Fee waiver: The majority of undergraduate honours degrees in Scotland are four years in length, whilst across the other nations in the UK they are usually three. If you are looking to join us and your degree will take three or four years to complete, Edinburgh Napier will only charge Rest

of UK/ROI students £9,535 per year for three years of study with us. This means for those on a four year degree we automatically provide you with a fee waiver. This will typically be applied in your final year of studies except where you undertake an exchange abroad or work placement where the fee waiver will be applied during the year this takes place. If you are planning to study one of our degrees that usually takes five years to complete (e.g. Integrated Masters) you will only pay fees for four years of study with us with a fee waiver applied either in the final year of studies or an earlier year should you undertake study abroad or a work placement.

Living costs: To assist with covering your general living costs you may also be eligible for support from your funding body which will usually issue living cost loans, bursaries and/or grants – these vary depending on your student funding.

Bursaries and scholarships: In addition to any funding from your student funding body, you may also be eligible for funding from us. We provide a generous package of cash award bursaries, up to £3,000 per year. This means you could receive up to £12,000 in bursaries (money you do not have to pay back), in addition to the £9,535 fee waiver for your fourth year of study.

Our main bursaries are:

Access Bursary – up to £2,000 per year, available to all eligible students with an approximate household income of £42,600 or less.

Merit Bursary – £1,000 per year, available to any Rest of UK/ROI student achieving BBB or higher in their A-levels (or equivalent qualifications) or H1,H1,H2,H2 in the Irish Leaving Certificate.

For more information, visit www.napier.ac.uk/study-with-us/bursaries

FEES, FINANCE AND VISAS

Students from the European Union

As of January 2020, the UK officially left the European Union which resulted in some changes to student finances for those coming from the EU.

EU students (excluding Republic of Ireland)

EU students who do not hold settled or pre-settled status will usually be eligible to pay the Overseas tuition fee. Please consult your course page on our website to confirm your fee amount. To assist self-funding EU domiciled students the University offers a range of scholarship and bursaries, for full details please consult our website.

www.napier.ac.uk/UG-EUfees

Republic of Ireland students

Students from the Republic of Ireland, who have normal residency in Ireland will be eligible to pay tuition fees of £9,535 per year, which is aligned with the fee for students from the Rest of UK. Please see pages 43 and 163 for full details of fee waivers and bursary schemes available for both Rest of UK and Republic of Ireland students.

International students

Fees: The amount of tuition fees for our undergraduate courses varies depending on your course. Please see the course pages on our website for the confirmed 2026 tuition fee rates when available.

If your fees are more than £6,500 and you need a Confirmation of Acceptance of Studies (CAS) to apply for your student visa, we require a pre-payment of £5,000 before you will receive your CAS. If your fees are less than £6,500, we will require advance payment in full. For further information on fees, see:

www.napier.ac.uk/internationalfees

Scholarships: We offer a variety of financial support, including scholarships, bursaries and grants. These are awarded for a wide variety of reasons and have differing eligibility. For more details, please visit:

www.napier.ac.uk/UG-INTfunding

All students – changes to tuition fees

Please note that tuition fees are subject to change and there may be an annual increment in the cost of tuition fees while you are at the University, taking into account the following circumstances:

- Any increases set or prescribed by regulatory bodies (other than the University), such as the Student Awards Agency for Scotland (SAAS) and the UK Government; and/or
- Changes to the cost of delivering our programmes.

Factors taken into account include, inflationary measures such as the retail price index (RPI), projected increases in university costs, changes in the level of grant from the Scottish Funding Council, costs of provision of teaching, supervision and course-related facilities.

Online students

Tuition fees for our online degrees are payable directly to the University. Please see the course listing on our website for more information on fees for online courses.

Visas

International and EU/EEA students looking to study with us in 2026/27 will need to have immigration permission. This will usually be through the Student Visa route or by the EU settlement scheme.

Please note that the Student Visa is the new visa which has replaced the previous Tier 4 (General) student visa. To assist you in applying for your visa or to answer any immigration questions you may have, we have a dedicated Visa and International Support team.

For full details and support materials relating to visas and immigration, please visit: www.napier.ac.uk/UG-visas

**For further information about
our tuition fees see
www.napier.ac.uk/fees**

Student Fees Team

☎ +44 (0) 333 900 6040

🌐 www.napier.ac.uk/ask



ADMISSIONS INFORMATION

Universities and Colleges Admissions Service (UCAS)

Applications for all our full-time undergraduate courses are processed through the centralised Universities and Colleges Admissions Services (UCAS) system. The application process is the same whether you are coming from school, college or an independent applicant. You'll need the Edinburgh Napier institution code, which is ENAP E59, along with the course code of your chosen programme of study.

Apply online at: www.ucas.com

Guidance on the application process and all course codes are listed on the UCAS website. You can also find useful information on its website on how to track progress of your application once it has been submitted.

Applications for part-time study are made online via our website from your chosen course information page. Find your chosen course and click the apply button.

Our entry requirements

You will find information on entry requirements for each course outlined on the relevant subject page of this prospectus and on our website. However, it's not possible to list all the qualifications we accept in this prospectus. If you would like to know how your qualifications fit our requirements, please see the full course listings on our website. Or contact us for guidance on entry requirements and to discuss your options.

Our admissions policy

The University is committed to ensuring we are accessible to the widest range of students who can benefit from higher education. We seek to admit any student who has the potential to succeed and benefit from our

programmes. Visit our website, or contact us for a copy of our Admissions Policy and Contextual Admissions Policy which explain how we consider each application we receive.

Widening access team

We support a wide range of applicants from all backgrounds and diverse learning paths. Get in touch with our team to see how we can help you start your journey into higher education: www.napier.ac.uk/ask

English language requirements

If English is not your first language you may need proof of an English language qualification. If you do not hold an approved English language qualification you may be required to sit an English language test, such as IELTS. To find out if you need to sit an English language test, visit: www.napier.ac.uk/your-country

International students

We welcome applications from all over the world. If you are applying from outside the EU, it is best to apply as soon as possible to give yourself enough time to make all the necessary arrangements for your visa, and to organise your travel and accommodation. The UCAS application deadline for non-UK and Republic of Ireland applicants is 29 June 2026. Country-specific requirements can be found at: www.napier.ac.uk/your-country

More information

We have plenty of useful information on our website to help answer any questions you may have on our admissions process, specific courses and any other general enquiries. Please go to: www.napier.ac.uk/undergraduate

For any questions on admissions or international enquiries, please complete our online enquiry form at www.napier.ac.uk/ask



UCAS

For help on course application and tracking, contact:

📞 UK: 0371 468 0468

📞 International: +44 (0) 330 3330 230

🌐 www.ucas.com



COURSE INDEX

ACCOUNTING & FINANCE 50-55

BA (Hons) Accounting
BA (Hons) Accounting with Corporate Finance
BA (Hons) Financial Services

ACTING 56-61

BA (Hons) Acting & English
BA (Hons) Stage & Screen Acting
BA (Hons) Stage and Screen Acting (advanced entry)

BIOLOGICAL SCIENCES 62-67

BSc (Hons) Animal & Conservation Biology
BSc (Hons) Applied Microbiology
BSc (Hons) Biological Sciences
BSc (Hons) Biomedical Science
BSc (Hons) Marine & Freshwater Biology

BUILDING & SURVEYING 68-73

BSc (Hons) Architectural Technology
BSc (Hons) Building Surveying
BSc (Hons) Real Estate Surveying
BSc (Hons) Quantity Surveying

BUSINESS & MANAGEMENT 74-79

BA (Hons) Business Management
BA (Hons) Business Management with Entrepreneurship
BA (Hons) Business Management with Human Resource Management
BA (Hons) Business Management with Marketing
BSc (Hons) Informatics for Business
BA (Hons) International Business Management
BA (Hons) Intercultural Business Communication and Marketing Management
BA (Hons) Intercultural Business Communication and Tourism Management

COMPUTING 80-87

BSc (Hons) Animation for Games
BEng (Hons) Computing
BSc (Hons) Computer Science / Computer Science (Artificial Intelligence)
BEng (Hons) Cybersecurity & Forensics
BSc (Hons) Data Science
BSc (Hons) Digital Media & Interaction Design
BSc (Hons) Digital Media & Interaction Design Global
BSc (Hons) Games Development
BEng (Hons) Network Engineering & Cybersecurity
BEng (Hons)/MEng Software Engineering
BSc (Hons) Sound Design
BSc (Hons) User Experience (UX) Design
BSc (Hons) Web Design & Development

CRIMINOLOGY, PSYCHOLOGY & SOCIOLOGY 88-93

BA (Hons) Criminology
BSc (Hons) Policing & Criminology
BA (Hons) Psychology or BSc (Hons) Psychology
BA (Hons) Psychology with Sociology
BA (Hons) Social Sciences

DESIGN & PHOTOGRAPHY 94-99

BSc (Hons) Digital Media & Interaction Design
BSc (Hons) Digital Media & Interaction Design Global
BDes (Hons) Graphic Design
BDes (Hons) Interior & Spatial Design
BA (Hons) Photography
BDes (Hons) Product Design
BSc (Hons) Sound Design
BSc (Hons) User Experience (UX) Design

ENGINEERING 100-105

BEng (Hons) Civil Engineering
MEng Civil Engineering
MEng Civil & Transportation Engineering
BEng (Hons) Electrical & Electronic Engineering
MEng Electrical & Electronic Engineering
BEng (Hons) Energy & Environmental Engineering
BEng (Hons) Mechanical Engineering
MEng Mechanical Engineering

ENGLISH 106-111

BA (Hons) English
BA (Hons) Acting & English
BA (Hons) English & Film

FILM, JOURNALISM & MEDIA 112-117

BSc (Hons) Digital Media & Interaction Design
BSc (Hons) Digital Media & Interaction Design Global
BA (Hons) English & Film
BA (Hons) Film
BA (Hons) Journalism
BA (Hons) Marketing with Digital Media
BA (Hons) Mass Communications
BA (Hons) Mass Communications, Advertising and Public Relations
BA (Hons) Photography
BA (Hons) Television (advanced entry)

LAW 118-123

LLB (Hons)
LLB Graduate Entry

MARKETING 124-129

BA (Hons) Intercultural Business Communications & Marketing Management
BA (Hons) Marketing Management
BA (Hons) Marketing with Digital Media

MUSIC 130-135

BA (Hons) Music

NURSING & MIDWIFERY 136-141

BM Midwifery
BN Nursing (Adult)
BN Nursing (Child Health)
BN Nursing (Learning Disabilities)
BN Nursing (Mental Health)
BSc Nursing Studies

SPORT & EXERCISE SCIENCES 142-147

BSc (Hons) Football Coaching, Performance & Development
BSc (Hons) Physical Activity & Health
BSc (Hons) Sports Coaching
BSc (Hons) Sport & Exercise Science (including advanced entry)

TOURISM, HOSPITALITY, FESTIVAL & EVENT MANAGEMENT 148-153

BA (Hons) Intercultural Business Communication & Tourism Management
BA (Hons) International Tourism Management
BA (Hons) International Tourism & Airline Management
BA (Hons) International Hospitality Management
BA (Hons) International Hospitality Management and Festival & Events
BA (Hons) International Festival & Event Management
BA (Hons) International Festival Event Management and Marketing



Disclaimers

1. The University endeavours to deliver courses and programmes of study in accordance with the description set out in this prospectus. The University's prospectus is produced at the earliest possible date in order to provide maximum assistance to individuals considering applying for a course of study offered by the University. The University makes every effort to ensure that the information contained in the prospectus is accurate but it is possible that some changes will occur between the date of printing and the start of the academic year to which it relates.

Please note that the University's website is the most up to date source of information regarding courses and facilities and we strongly recommend that you always visit the website before making any commitments.

2. Although reasonable steps are taken to provide the programmes and services described, the University cannot guarantee the provision of any course or facility and the University may make variations to the contents or methods of delivery of courses, discontinue, merge or combine courses and introduce new courses if such action is reasonably considered to be necessary by the University. Such circumstances include (but are not limited to) industrial action, lack of demand, departure of key staff, changes in legislation or Government policy, withdrawal or reduction of funding or other circumstances beyond the University's reasonable control.

3. If the University discontinues any courses, it will use its reasonable endeavours to provide a suitable alternative course. In addition, courses may change during the course of study and in such circumstances the University will normally undertake a consultation process prior to any such changes and seek to ensure that no student is unreasonably prejudiced as a consequence of any such change.

4. The University does not accept responsibility, and excludes any liability for damage to students' property (other than through the negligence of the University, its staff or agents), or for the consequences of any modification or cancellation of any course, or part of a course, offered by the University but will take into consideration the effects on individual students and seek to minimise the impact of such effects where reasonably practicable.

5. The University cannot accept any liability for disruption to its provision of educational or other services caused by circumstances beyond its control, but the University will take all reasonable steps to minimise the resultant disruption to such services.

University rules, regulations and policies

As a condition of enrolment, all students will be required to abide by and submit to the University's Rules, Regulations and Policies, including Student Conduct Regulations, Academic Regulations, Library and Computing Regulations and Health and Safety Rules. These may be viewed at: www.napier.ac.uk/regulations or may be requested by contacting: www.napier.ac.uk/ask. Our terms and conditions are available on my.napier.ac.uk.

Equal Opportunities

Edinburgh Napier University is committed to providing learning opportunities for all and is aiming to create an environment in which students are selected solely on the basis of merit. It is committed to equality of opportunity for all and will not unlawfully discriminate on any grounds.

Data Protection

Edinburgh Napier University processes personal data in compliance with the Data Protection Act 2018. Please visit staff.napier.ac.uk/dpstatements for more information.

Sustainability

At Edinburgh Napier University we are committed to reducing the environmental impact of our activities. With a dedicated Sustainability Office, working with all students and staff, we are striving to create an even more environmentally aware ethos. For further information, contact:

sustainabilityoffice@napier.ac.uk

Edinburgh Napier University is a registered Scottish charity. Registration number SC018373.

Designed, produced, photographed and published by Marketing & External Relations, Edinburgh Napier University.

Our thanks to all students, graduates and staff who agreed to appear in this publication.

© Edinburgh Napier University 2025



FIND OUT MORE

www.napier.ac.uk/undergraduate



Keep in touch

@EdinburghNapierUniversity

@EdinburghNapier

Edinburgh-Napier-University

@EdinburghNapier

@EdinburghNapier

EdinburghNapierUni



Edinburgh Napier
UNIVERSITY

Open Days

2025

Saturday 20 September

Saturday 1 November

REGISTER NOW

www.napier.ac.uk/openday

