

A guide for
international
students 2026

Welcome to Edinburgh Napier University

Edinburgh is one of the best cities in the world to be a student. Beautiful and buzzing yet compact and safe, Edinburgh is ranked the 2nd best student city in the UK (QS Best Student Cities 2025).

Edinburgh scores highly in QS Best Student Cities for its student mix, reflecting the city's vibrant international student community. This highlights the rich cultural diversity of Scotland's historic capital.

With that in mind, throughout this guide, quotes from our students and graduates tell you all about their experiences of living in Edinburgh and studying at Edinburgh Napier University.

From accommodation to public transport, seeing the sights, and what's on campus – we've got it covered. In this guide, you'll also find a full course listing and other practical information to help make your journey from future student to Edinburgh Napier student a smooth one.



Get all the information you need at
napier.ac.uk/international

Index

Edinburgh	4
Scotland	10
Our location	12
International Alumni	14
Campuses	16
Craiglockhart	16
Sighthill	18
Merchiston	20
ENU International College	22
Accommodation	24
What you can study	26
Employability	38
Research	40
Support	42
Applying	44
English language	46
Visas	47
Finances	48
Follow us	50
Contact us	52



#1 modern university in Scotland

THE World University Rankings 2025

#1

university in Edinburgh for student satisfaction

National Student Survey 2020-2024

Edinburgh Napier University

We have around 4,000 international students on campus from more than 100 countries. Who better to describe the Edinburgh Napier experience?

Throughout this guide, you'll find our students talking about what they love about their life in Scotland.

Top Scottish modern university

for both research power and research impact

REF 2021

97%

of our graduates are in work or further study 15 months after graduation

HESA 2021/22

over 4,000 international students

on campus from more than 100 countries

Nearly 700

start-ups have been supported by our in-house business incubator



Edinburgh

**Capital
city of
Scotland**

**More than
60,000**
students call
Edinburgh home

A UNESCO World
Heritage Site,
home to
Edinburgh Castle
and 900+
historic sites

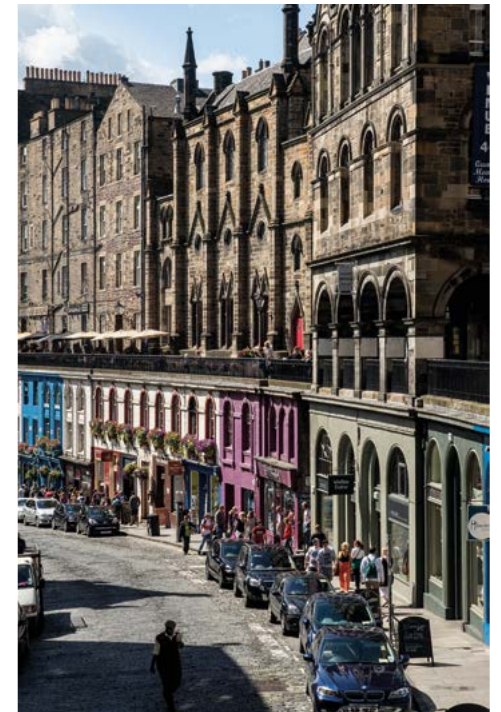
**2nd
best city**
in the UK
for students

QS Best Student Cities 2025

**Home to
the world's
largest arts
festival**

**Voted best
city in the
world**

Time Out Index 2022

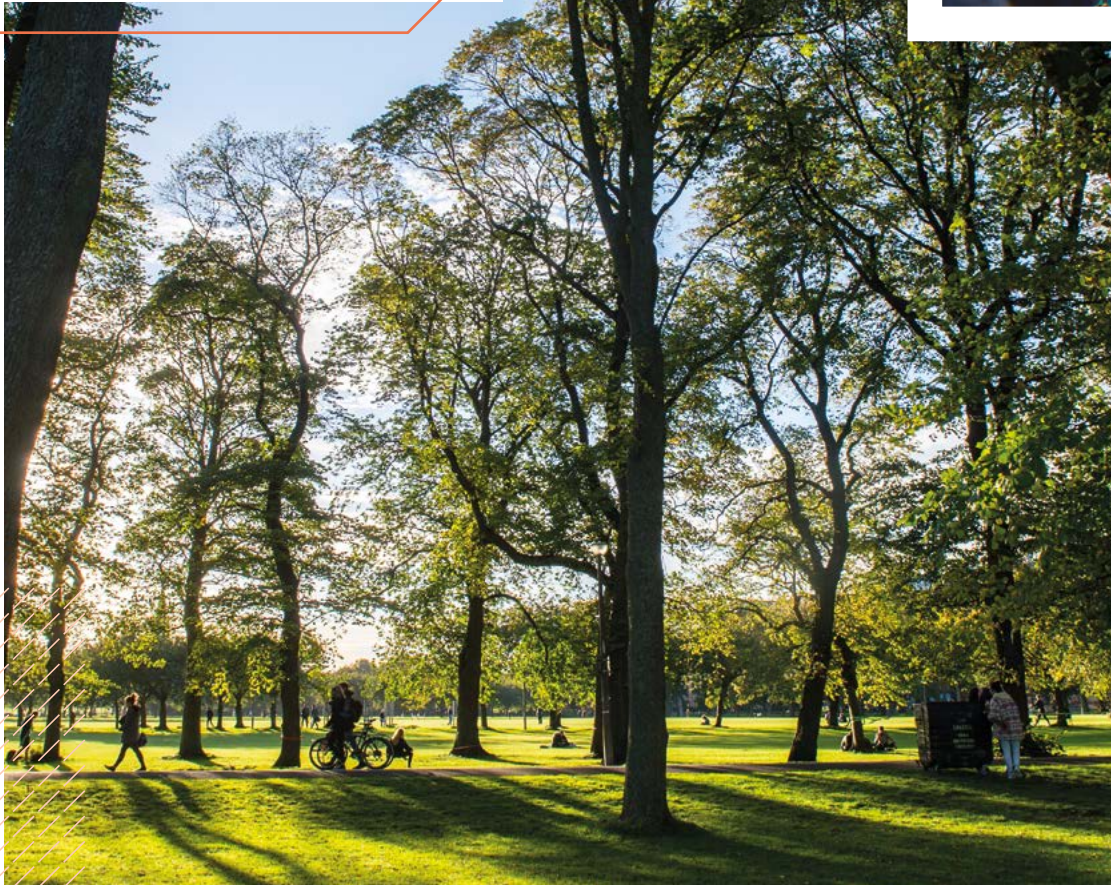


“ The city is modern but has a lot of touches of old historic buildings at the same time and I think that's what makes Edinburgh so beautiful. I like that Scotland has a rich culture and so many beautiful traditions. Also driving around Scotland you see some of the most mind-blowing and almost artistic views along the way.

Daniah, Bahrain

“ What I love most about Edinburgh are the views – especially at Princes Street Gardens. It is my favourite place to sit and have my own time – in the summer I hope to relax on the grass with my friends. The old buildings enhance the beauty of this city.

Anum, Pakistan



“ The city’s stunning landscapes, lovely architecture and festivals add to the university experience, making it memorable and inspiring.

Javier, Colombia



“ My favourite place in Edinburgh has to be either the Scott monument or up at Arthur’s Seat. The Scott monument is just so beautiful, especially at Christmas when it lights up in different colours! And the view from Arthur’s Seat is just gorgeous. It really is a stunning place and walking up with some friends is so much fun! In Edinburgh you get both the benefits of a city life as well as having nature elements close. It really is the best of both worlds.

Siri Marlene, Norway



Scotland

“ Many great places can be easily reached from Edinburgh by car, train or coach. Glasgow, St Andrews and Stirling are worth seeing and nearby. My highlight so far was the trip to the Highlands and the Isle of Skye. I was mesmerised by the beauty of this place with its iconic castles, mountains, lakes (called lochs in Scotland) and waterfalls!

Lisa, Germany

“ There's so much to explore here! Scotland has so many beautiful places to visit and you can easily take a train to anywhere else in the UK. In addition, there are many cheap flights to other countries in Europe. It's great being able to easily explore so many beautiful places.

Ansley, USA



Our location

Study in the best location

Wherever you are in the world, Scotland and Edinburgh are closer than you think. Once you are here, there's easy access to major UK cities by train, and all of Scotland at your fingertips, with free bus travel for under 22's.

Edinburgh Airport offers services to over 150 worldwide destinations, as well as daily flights to London (taking under an hour). Here are some approximate flight times to Edinburgh from other major global centres:

- **Amsterdam 1.5 hours**
- **Berlin 2 hours**
- **New York 7.5 hours**
- **Beijing 9 hours**
- **Dubai 7 hours***
- **Islamabad 10.5 hours***
- **Accra 11 hours***
- **Lagos 11 hours***
- **Mumbai 12 hours***
- **Bangkok 14 hours***
- **Rio de Janeiro 14 hours***

*not direct



What about getting around Edinburgh?



BUS

The Edinburgh bus network is first class for getting you around, with over 50 different routes crossing all over the city. Our favourite is the number 36, which connects all three of our campuses to the city centre.



TRAM

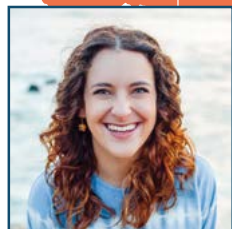
Our Sighthill campus is the furthest from the city centre but is still just a 20-minute tram ride from the main shopping area. And the very same tramline takes you all the way to the airport.



BIKE

Thanks to its superb network of bike paths, you can reach many parts of Edinburgh on safe, traffic-free cycle routes.

International Alumni



Sydney Chasin
Founder & CEO at Chasin' Dreams Farm,
 BA (Hons) Financial Services with Entrepreneurship (2016)



Monica Louise Lindqvist Arvidson
HR Technology Consultant at Norgesgruppen,
 BA (Hons) Business Management (2010)

Norway

Germany

Saudi Arabia

Nigeria

Ghana

Brazil



Ilou John
Contract Management Administrator at European Centre for Medium-Range Weather Forecasts,
 MSc International Business Management (2022)

Singapore



Beto Petroni
Head of Communications & PR at RecargaPay,
 MSc Marketing & Events Management (2014)



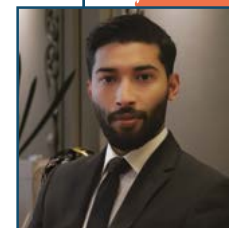
Prince Akowuah Aning
PhD Lecturer at Ashesi University College,
 MSc Business Management (Entrepreneurship) (2015)



Chinaza Medelene Okorie
Co-Founder & Lead Developer at The Playwork Dreams Ltd,
 BEng (Hons) Software Engineering (2016)



Fawaz Alruwaili
Advanced Cybersecurity expert at Confidential Careers,
 BEng (Hons) Computer Security & Forensics (2014); MSc Advanced Security & Digital Forensics (2016)



Syed Azmat Hussain Babar
Associate Lawyer at the Office of the Attorney General for Pakistan,
 LLB (Hons) (2024)

We have over 165,000 alumni in 183 countries with new graduates joining the community each year. Imagine where an Edinburgh Napier education could take you!

Craiglockhart Campus

Home to:
The Business School

Top 5 UK modern university for **Law**

#1 UK modern university for Accounting and Finance

The Times & Sunday Times Good University Guide 2025

90%
satisfaction for
academic support

National Student Survey 2024

Facilities include:

- Iconic 200-seat Lindsay Stewart lecture theatre
- A stunning park-like setting with cycle paths and bike storage facilities
- Coffee shop and cafeteria

“ The thing I love the most about Edinburgh Napier is my campus at Craiglockhart – it is beside Craiglockhart Hill and is surrounded by nature. Best of all, it has one of the best views of the city!

Anam, UAE

Explore all
our campuses
virtually:



Sighthill Campus

Home to:
School of Applied Sciences
School of Health & Social Care

Facilities include:

- Sports and exercise science labs
- Environmental chamber to simulate high-altitude conditions
- Biotech labs
- Simulation and Clinical Skills Centre
- Five-storey Learning Resource Centre with views over the city
- [EN]GAGE gym and sports hall
- Coffee shop and cafeteria

“Sighthill may be the furthest from the city centre but for me it is the ‘mother’ of all three campuses: sport facilities, laboratories, a large cafeteria and lounge area with an incredible five-storey library featuring the most stunning views!

Sofia, Greece

Top 5
modern university
for **Psychology**

The Times/Sunday Times Good
University Guide 2025

100%
overall satisfaction
in **Psychology** and
**Biomedical
Sciences**

National Student Survey 2024

Merchiston Campus

Home to:
School of Arts & Creative Industries
School of Computing, Engineering
& the Built Environment

Facilities include:

- 500-seat Jack Kilby Computing Centre open 24/7 in trimesters 1 and 2
- Professional music, TV, radio, design and photography studios
- Industry-standard newsroom
- Specialist CodeLab with games development kits and NVIDIA-enhanced machines
- User Experience Sensorium lab, with eye tracking and facial expression analysis software
- Digital media labs, an Internet of Things lab and a Cisco networking lab
- Robotics and Automated Manufacturing lab
- Coffee shop and cafeteria



“ Among all the facilities, the Jack Kilby Computing Centre (JKCC), which is open 24/7, is my favourite. I have never been somewhere that has computers available all day. The JKCC also has a lot of study areas which students can use to have group discussions – it’s fantastic. I love it here!

Huan, China

#1

UK modern
university for
Computer Science

The Times & Sunday Times Good
University Guide 2025

Top 10

UK modern
university for
Journalism

The Guardian University Guide 2025

Edinburgh Napier University International College

Opened in 2024, Edinburgh Napier University International College (ENUIC) is an embedded on-campus college for international students to start their studies at Edinburgh Napier University.

The International College is located in our historic city centre Merchiston campus, with easy access to student accommodation.

The International College offers undergraduate and postgraduate pathway courses which include an integrated focus on English language acquisition, academic skills, community building and acculturation. Successful completion of these pathway courses allows students to progress onto a range of undergraduate and postgraduate degrees at Edinburgh Napier University.



Students can choose to study: Foundation Nursing, International Stage One, International Stage Two, or an International Incorporated Master's.

International Foundation Year in Nursing your first step towards becoming a registered nurse in the UK. Gain the skills, confidence and knowledge to start your nursing degree at Edinburgh Napier University.

International Stage One is the equivalent to the first year of a four-year Scottish undergraduate degree, developing your English language skills and academic knowledge.

International Stage Two is the equivalent to the second year of a four-year Scottish undergraduate degree, with advanced subject specific modules and extra English language skills.

International Stage Two is the equivalent to the second year of a four-year Scottish undergraduate degree, with advanced subject specific modules and extra English language skills.

International Incorporated Master's is an integrated postgraduate pathway over one or two terms to support students to progress onto their chosen master's degree.

UNDERGRADUATE COURSES

International Foundation Year in Nursing

HEALTH & SOCIAL CARE

- BN Adult Nursing

International Stage One

ARTS AND CREATIVE INDUSTRIES

- BA Mass Communications
- BA Mass Communications with Advertising and Public Relations

BIOSCIENCES

- BSc (Hons) Biomedical Science
- BSc (Hons) Biological Science
- BSc (Hons) Applied Microbiology

BUSINESS

- BA (Hons) Business Management
- BA (Hons) Marketing Management
- BA (Hons) Accounting
- BA (Hons) Accounting with Corporate Finance
- BA (Hons) International Festival and Event Management
- BA (Hons) International Hospitality Management
- BA (Hons) International Tourism and Airline Management
- BA (Hons) International Tourism Management
- BA (Hons) Financial Services

COMPUTING

- BEng (Hons) Computer Systems and Networks
- BEng (Hons) Computing
- BEng (Hons) Cybersecurity and Forensics
- BSc (Hons) Computer Science
- BSc (Hons) Computer Science (AI)
- BEng (Hons) Software Engineering
- BSc (Hons) Games Development

DIGITAL MEDIA

- BSc (Hons) Web Design and Development
- BSc (Hons) Digital Media and Interaction Design
- BSc (Hons) User Experience (UX) Design

ENGINEERING

- BEng (Hons) Civil Engineering
- BEng (Hons) Civil and Transportation Engineering
- BEng (Hons) Electrical and Electronic Engineering
- BEng (Hons) Energy and Environmental Engineering
- BEng (Hons) Mechanical Engineering

International Stage Two

BUSINESS

- BA (Hons) Business Management

COMPUTING

- BEng (Hons) Computer Systems and Networks
- BEng (Hons) Computing
- BEng (Hons) Cybersecurity and Forensics
- BSc (Hons) Computer Science
- BSc (Hons) Computer Science (AI)
- BEng (Hons) Software Engineering
- BSc (Hons) Games Development

POSTGRADUATE COURSES

International Incorporated Master's

ARTS AND CREATIVE INDUSTRIES

- MA Journalism
- MA Sports Journalism
- MSc Publishing
- MA Heritage and Exhibition Design
- MA Design for Interactive Experience

BUSINESS

- MSc International Business Management
- MSc International Human Resource Management
- MSc Accounting
- MSc International Finance
- MSc Global Hospitality Management
- MSc International Tourism Destination Management
- MSc International Heritage and Cultural Tourism Management
- MSc International Festival and Event Management
- MSc Intercultural Business Communication
- MSc Global Logistics and Supply Chain Management

COMPUTING

- MSc (Hons) Computing
- MSc (Hons) Computing (Web Development)

HEALTH & SOCIAL CARE

- MSc Healthcare Management
- MPH Master of Public Health

For more information on our International College pathways and how to apply, visit: www.napier.ac.uk/internationalcollege



University Accommodation

Our student accommodation is affordable, modern, centrally located and within easy access of our campuses. Most rooms are en-suite, and you'll have a double bed, a desk and high-speed Wi-Fi. You'll share a kitchen and living space with a communal smart TV and have access to a central laundry.

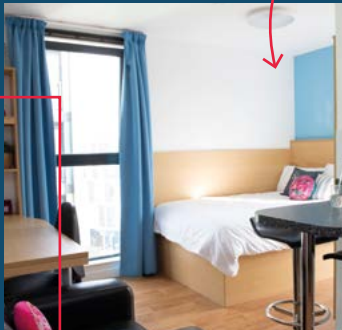
All our accommodation is comfortable and conveniently located – you'll find supermarkets, bars, restaurants and cinemas are all nearby.

- **Guaranteed** for all undergraduate students coming to Edinburgh Napier University for their first time and longer than 1 trimester
- **Three sites** in the city centre (**Bainfield, Orwell Terrace and Slateford Road**)
- **Apply online** as soon as you have firmly accepted your unconditional offer

Standard rooms from
£197.61
per week



For more information on university accommodation, visit:
www.napier.ac.uk/accommodation



Private Accommodation

As an alternative to living in our accommodation, you could rent a flat from a private landlord. Our accommodation office will support and advise you on private accommodation, from where best to start looking and how to deal with tenancy agreements, to making sure you choose a great neighbourhood.

There are often a lot of people looking for student properties in Edinburgh, so we recommend starting your search as soon as you can. Rent will vary depending on the size, location and condition of the flat. All students will have to pay gas and electricity bills. You may also want to factor in other costs including mobile phone, internet (wifi) and a TV license or any streaming services, as these will not be included.

If you are a full-time student you may be exempt from paying council tax, but you must register for an exemption.

The council may offer a 25% discount if all but one of the adults living at the property are students. Or a 100% exemption if the property is occupied solely by students.

For more information on calculating an approximate monthly budget, please refer to Finances, p. 48.



We have put together a lot of useful information about private accommodation at:
www.napier.ac.uk/privateaccommodation



“ The lecturers are skilled in their areas of specialty and very approachable. Considering the fact that I come from a different part of the world, the staff have been incredibly helpful and patient. This has made studying at Edinburgh Napier so much easier than I thought it may be.

Titilayo, Nigeria

What you can study

Please note that course information can change. For the most up-to-date course information, please visit www.napier.ac.uk/courses or contact us directly (see Contact Us p. 53).



Find details of all our courses at
www.napier.ac.uk/study-areas

Accounting & Finance

Award	Programme	Length	Start date
UNDERGRADUATE			
BA (Hons)	Accounting	4 years	Sep
BA (Hons)	Accounting with Corporate Finance	4 years	Sep
BA (Hons)	Financial Services	4 years	Sep
POSTGRADUATE			
MSc	Accounting	1-1.5 years	Sep/Jan
MSc	International Finance	1-1.5 years	Sep/Jan

Acting

Award	Programme	Length	Start date
UNDERGRADUATE			
BA (Hons)	Acting & English	4 years	Sep
BA (Hons)	Stage & Screen Acting (advanced entry)	2 years	Sep
POSTGRADUATE			
MFA	Acting for Stage and Screen	2 years	Sep
MFA	Directing	2 years	Sep

Biological Sciences

Award	Programme	Length	Start date
UNDERGRADUATE			
BSc (Hons)	Animal & Conservation Biology	4 years	Sep
BSc (Hons)	Applied Microbiology	4 years	Sep
BSc (Hons)	Biological Science	4 years	Sep
BSc (Hons)	Biomedical Science	4 years	Sep
BSc (Hons)	Marine & Freshwater Biology	4 years	Sep
POSTGRADUATE			
MSc	Biomedical Science	1-1.5 years	Sep/Jan
MSc	Drug Design & Biomedical Science	1-1.5 years	Sep/Jan
MSc	Medical Biotechnology	1-1.5 years	Sep/Jan
MSc	Pharmaceutical & Analytical Science	2 years	Jan
MSc	Wildlife Biology & Conservation	1-1.5 years	Sep/Jan

Building & Surveying

Award	Programme	Length	Start date
UNDERGRADUATE			
BSc (Hons)	Architectural Technology	4 years	Sep
BSc (Hons)	Building Surveying	4 years	Sep
BSc (Hons)	Quantity Surveying	4 years	Sep
BSc (Hons)	Real Estate Surveying	4 years	Sep
POSTGRADUATE			
MSc	Architectural Technology & Sustainable Building Performance	1 year	Sep
MSc	Construction Project Management	1-1.5 years	Sep/Jan
MSc	Environmental Sustainability	1-1.5 years	Sep/Jan
MSc	Real Estate Management & Investment	1-1.5 years	Sep/Jan

Business & Management

Award	Programme	Length	Start date
UNDERGRADUATE			
BA (Hons)	Business Management	4 years	Sep
BA (Hons)	Business Management with Entrepreneurship	4 years	Sep
BA (Hons)	Business Management with Human Resource Management	4 years	Sep
BA (Hons)	Business Management with Marketing	4 years	Sep
BA	Business Management with Sustainability (Top-up) (Online)	12-24 months	Sep/Jan/June
BSc (Hons)	Informatics for Business	4 years	Sep
BA (Hons)	Intercultural Business Communication and Marketing Management	4 years	Sep
BA (Hons)	Intercultural Business Communication and Tourism Management	4 years	Sep
BA (Hons)	International Business Management	4 years	Sep
POSTGRADUATE			
MSc	Business Analytics	1 year	Sep
MSc	Business Management	1-1.5 years	Sep/Jan
MSc	Digital Transformation & Management	1 year	Sep
MSc	Global Hospitality Management (Extended)	21-24 months	Sep/Jan
MSc	Global Logistics and Supply Chain Analytics	1-1.5 years	Sep/Jan
MSc	Human Resource Management	1 year	Sep
MSc	Intercultural Business Communication	1 year	Sep
MSc	International Business Management	1-1.5 years	Sep/Jan
MSc	International Human Resource Management	1-1.5 years	Sep/Jan
MSc	Real Estate Management & Investment	1-1.5 years	Sep/Jan
MBA	Business Analytics (Online)	21-33 months	Sep/Jan
MBA	MBA (Business Leadership and Practice)	2 years	Sep/Jan
MBA	MBA (Strategic Project Management)	2 years	Sep/Jan

Computing

Award	Programme	Length	Start date
UNDERGRADUATE			
BSc (Hons)	Animation for Games	4 years	Sep
BEng (Hons)	Computing	4 years	Sep
BSc (Hons)	Computer Science	4 years	Sep
BSc (Hons)	Computer Science (Artificial Intelligence)	4 years	Sep
BEng (Hons)	Computer Systems & Networks	4 years	Sep
BEng (Hons)	Cybersecurity & Forensics	4 years	Sep
BSc (Hons)	Data Science	4 years	Sep
BSc (Hons)	Digital Media & Interaction Design	4 years	Sep
BSc (Hons)	Digital Media & Interaction Design Global	4 years	Sep
BSc (Hons)	Games Development	4 years	Sep
BSc (Hons)	Informatics for Business	4 years	Sep
BEng (Hons)	Software Engineering	4 years	Sep
MEng	Software Engineering	5 years	Sep
BSc (Hons)	Sound Design	4 years	Sep
BSc (Hons)	User Experience (UX) Design	4 years	Sep
BSc (Hons)	Web Design & Development	4 years	Sep
POSTGRADUATE			
MSc	Artificial Intelligence and Data Science	1-1.5 years	Sep/Jan
MSc	Business Information Technology	1-1.5 years	Sep/Jan
MSc	Computing	1-1.5 years	Sep/Jan
MSc	Computing with Professional Placement	2 years	Sep/Jan
MSc	Cyber Security	1-1.5 years	Sep/Jan
MSc	Cyber Security (Distance Learning)	2.5-4 years	Sep/Jan
MSc	Data Science	1 year	Jan
MSc	Digital Technologies for Smart Cities	1-1.5 years	Sep/Jan
MSc	Robotics and Autonomous Systems Engineering	1-1.5 year	Sep/Jan
MSc	Sound Design	1-1.5 year	Sep/Jan
MSc	User Experience Design	1-1.5 year	Sep/Jan

Criminology, Psychology & Sociology

Award	Programme	Length	Start date
UNDERGRADUATE			
BA (Hons)	Criminology	4 years	Sep
BSc (Hons)	Policing & Criminology	4 years	Sep
BA (Hons)/ BSc (Hons)	Psychology	4 years	Sep
BA (Hons)	Psychology with Sociology	4 years	Sep
BSc (Hons)	Psychology and Sociology	4 years	Sep
BA (Hons)	Social Sciences	4 years	Sep
POSTGRADUATE			
MSc	Applied Criminology & Forensic Psychology	1 year	Sep
MSc	Applied Forensic Psychology	1 year	Sep
MSc	Crime and Justice in Practice	1 year	Sep
MSc	Social Research and Policy	1 year	Sep

Design, Photography & Advertising

Award	Programme	Length	Start date
UNDERGRADUATE			
BSc (Hons)	Digital Media & Interaction Design	4 years	Sep
BDes (Hons)	Graphic Design	4 years	Sep
BDes (Hons)	Interior & Spatial Design	4 years	Sep
BA (Hons)	Photography	4 years	Sep
BDes (Hons)	Product Design	4 years	Sep
POSTGRADUATE			
MSc	Creative Advertising	1 year	Sep
MA	Design for Interactive Experience	1 year	Sep
MFA	Design for Interactive Art & Experiences	2 years	Sep
MSc	Design Research	1 year	Sep
MA/MFA	Heritage and Exhibition Design	1-2 years	Sep
MA	Service Design	1 year	Sep

Engineering

Award	Programme	Length	Start date
UNDERGRADUATE			
BEng (Hons)	Civil Engineering	4 years	Sep
MEng	Civil Engineering	5 years	Sep
MEng	Civil & Transportation Engineering	5 years	Sep
BEng (Hons)	Electrical & Electronic Engineering	4 years	Sep
MEng	Electrical & Electronic Engineering	5 years	Sep
BEng (Hons)	Energy & Environmental Engineering	4 years	Sep
BEng (Hons)	Mechanical Engineering	4 years	Sep
MEng	Mechanical Engineering	5 years	Sep
POSTGRADUATE			
MSc	Advanced Materials Engineering	1-1.5 years	Sep/Jan
MSc	Advanced Mechanical Engineering	1 year	Sep/Jan
MSc	Advanced Structural Engineering	1-1.5 years	Sep/Jan
MSc	Automation & Control	1-1.5 years	Sep/Jan
MSc	Data Engineering (Online)	21-33 months	Sep/Jan
MSc	Digital Technologies for Smart Cities	1 year	Sep/Jan
MSc	Environmental Sustainability	1-1.5 years	Sep/Jan
MSc	Renewable Energy	1-1.5 years	Sep/Jan
MSc	Robotics and Autonomous Systems Engineering	1 year	Sep/Jan
MSc	Transport Planning & Engineering	1-1.5 years	Sep/Jan

English, Creative Writing & Publishing

Award	Programme	Length	Start date
UNDERGRADUATE			
BA (Hons)	Acting & English	4 years	Sep
BA (Hons)	English	4 years	Sep
BA (Hons)	English & Film	4 years	Sep
Certificate of credit English as a Foreign Language		1 year	Sep
Certificate of credit English as a Foreign Language		8 months	Jan

POSTGRADUATE

MA	Creative Writing	1 year	Sep
MSc	Publishing	1 year	Sep
MA	Writing Popular Fiction*	1 year	Sep

Film, Journalism & Media

Award	Programme	Length	Start date
UNDERGRADUATE			
BSc (Hons)	Digital Media & Interaction Design	4 years	Sep
BA (Hons)	English & Film	4 years	Sep
BA (Hons)	Film	4 years	Sep
BA (Hons)	Journalism	4 years	Sep
BA (Hons)	Marketing with Digital Media	4 years	Sep
BA (Hons)	Mass Communications	4 years	Sep
BA (Hons)	Mass Communications, Advertising and Public Relations	4 years	Sep
BA (Hons)	Photography	4 years	Sep
BA (Hons)	Television (advanced entry)	1 year	Sep
POSTGRADUATE			
MFA	Advanced Film Practice	2 years	Sep
MA	Creative Documentary Filmmaking (Distance Learning)	2 years	Sep
MFA	Directing	2 years	Sep
MA	Film	1 year	Sep
MA	Journalism	1 year	Sep
MA	Sports Journalism	1 year	Sep
MSc	Publishing	1 year	Sep
MA	Screenwriting	1 year	Sep

*This course is run with a US partner, Seton Hill University.

Health & Social Care

Award	Programme	Length	Start date
POSTGRADUATE			
MSc	Clinical Exercise Physiology	1 year	Sep
MSc	Clinical Healthcare Technology	3 years	Sep
MSc	Healthcare Management	1-1.5 years	Sep/Jan
MSc	Master of Public Health	1 year	Jan
MSc	Occupational Therapy (pre-registration)	2 years	Jan
MSc	Physiotherapy (pre-registration)	2 years	Jan
MSc	Public Health (Online)	2 years	Jan

Law

Award	Programme	Length	Start date
UNDERGRADUATE			
LLB/LLB (Hons)	Law	4 years	Sep
LLB	Law – Graduate Entry	2 years	Sep

Marketing

Award	Programme	Length	Start date
UNDERGRADUATE			
BA (Hons)	Business Management with Marketing	4 years	Sep
BA (Hons)	Intercultural Business Communication and Marketing Management	4 years	Sep
BA (Hons)	International Festival Event Management and Marketing	4 years	Sep
BA (Hons)	Marketing Management	4 years	Sep
BA (Hons)	Marketing with Digital Media	4 years	Sep
POSTGRADUATE			
MSc	Creative Advertising	1 year	Sep
MSc	International Marketing	1 year	Sep
MSc	International Marketing (Dual Degree)	1 year	Sep
MSc	International Marketing with Tourism	1 year	Sep
MSc	International Marketing with Tourism (Dual Degree)	1 year	Sep

MSc	Marketing	1-1.5 years	Sep/Jan
MSc	Marketing with Digital Strategy	1-1.5 years	Sep/Jan
MSc	Marketing with Festival & Event Management	1-1.5 years	Sep/Jan
MSc	Marketing with Sustainability	1 year	Sep/Jan

Music

Award	Programme	Length	Start date
UNDERGRADUATE			
BA (Hons)	Music	4 years	Sep
POSTGRADUATE			
MA	Music	1 year	Sep
Msc	Sound Design (Distance Learning)	18-30 months	Sep/Jan

Nursing

Award	Programme	Length	Start date
UNDERGRADUATE			
BN	Nursing Adult Health	3 years	Sep
BN	Nursing Child Health	3 years	Sep
BN	Nursing Mental Health	3 years	Sep
BN	Nursing Learning Disabilities	3 years	Sep
BSc	Nursing Studies	1 year	Sep

Sport & Exercise Sciences

Award	Programme	Length	Start date
UNDERGRADUATE			
BSc (Hons)	Football Coaching, Performance and Development	4 years	Sep
BSc (Hons)	Physical Activity & Health	4 years	Sep
BSc (Hons)	Sport & Exercise Science	4 years	Sep
BSc (Hons)	Sports Coaching	4 years	Sep
POSTGRADUATE			
MSc	Applied Sport Science	1 year	Sep
MSc	Clinical Exercise Physiology	1 year	Sep

Teaching

Award	Programme	Length	Start date
POSTGRADUATE			
PgDip	Career Guidance & Development	1 year	Sep
PGDE	Education (Biology, Chemistry, English, Mathematics, Physics)	1 year	Aug

Tourism, Hospitality, Festival & Event Management

Award	Programme	Length	Start date
UNDERGRADUATE			
BA (Hons)	Intercultural Business Communication and Tourism Management	4 years	Sep
BA (Hons)	International Festival & Event Management	4 years	Sep
BA (Hons)	International Festival & Event Management and Marketing	4 years	Sep
BA (Hons)	International Hospitality Management	4 years	Sep
BA (Hons)	International Hospitality Management and Festival & Events	4 years	Sep
BA (Hons)	International Tourism Management	4 years	Sep
BA (Hons)	International Tourism & Airline Management	4 years	Sep
POSTGRADUATE			
MSc	Global Hospitality Management (Extended)	21-24 months	Sep/Jan
MSc	International Festival & Event Management	1-1.5 years	Sep/Jan
MSc	International Marketing with Tourism	1 year	Sep
MSc	International Marketing with Tourism (Dual Degree)	1 year	Sep
MSc	International Tourism Destination Management	1-1.5 years	Sep/Jan
MSc	Marketing with Festival & Event Management	1-1.5 years	Sep/Jan



“The course itself is absolutely wonderful. It has been everything I expected so far. There is a good mix of lectures and practical work, and the teaching staff are all really supportive. They are extremely welcoming, and you can tell right away that they really want you to succeed.

Lauren, USA

Employability

At Edinburgh Napier we teach you your chosen subject and ensure you have essential employability skills too. One of the main ways we do this is through real-world experience and work placement opportunities embedded throughout your course.

Our Employability & Careers team is on-hand to help with:

- one-to-one career guidance
- professional development workshops
- interview technique support
- work placements

97%
of our graduates
are in work or
further study
15 months after
graduation.

(HESA 2021/22)

Our Enterprise hub, Bright Red Triangle, provides free, lifelong support to students, staff, and alumni to help them develop enterprise skills, increase entrepreneurial activity, and capture new opportunities. We offer expert business advice, 24/7 access to a co-working space at our Startup Studio in Bainfield, and a diverse range of programmes, workshops, and events designed to support and inspire entrepreneurial journeys.

www.brightredtriangle.co.uk

“ I would highly recommend a placement to others. It is an excellent opportunity to gain work experience, expand your network, develop in-demand skills, and apply the theoretical knowledge gained from your degree.

Dheeraj, Curacao

Our courses are created in collaboration with industry. Here are just some of the partners who accredit, recognise and work with us to deliver our programmes.



Research

You can study a range of research degrees with us, all of which provide training in research, enhance your employment opportunities and allow you to develop advanced skills and expertise in a specific area of interest.

We offer Masters by Research (MRes), MPhil, PhD and DBA options. Find out more on our website.

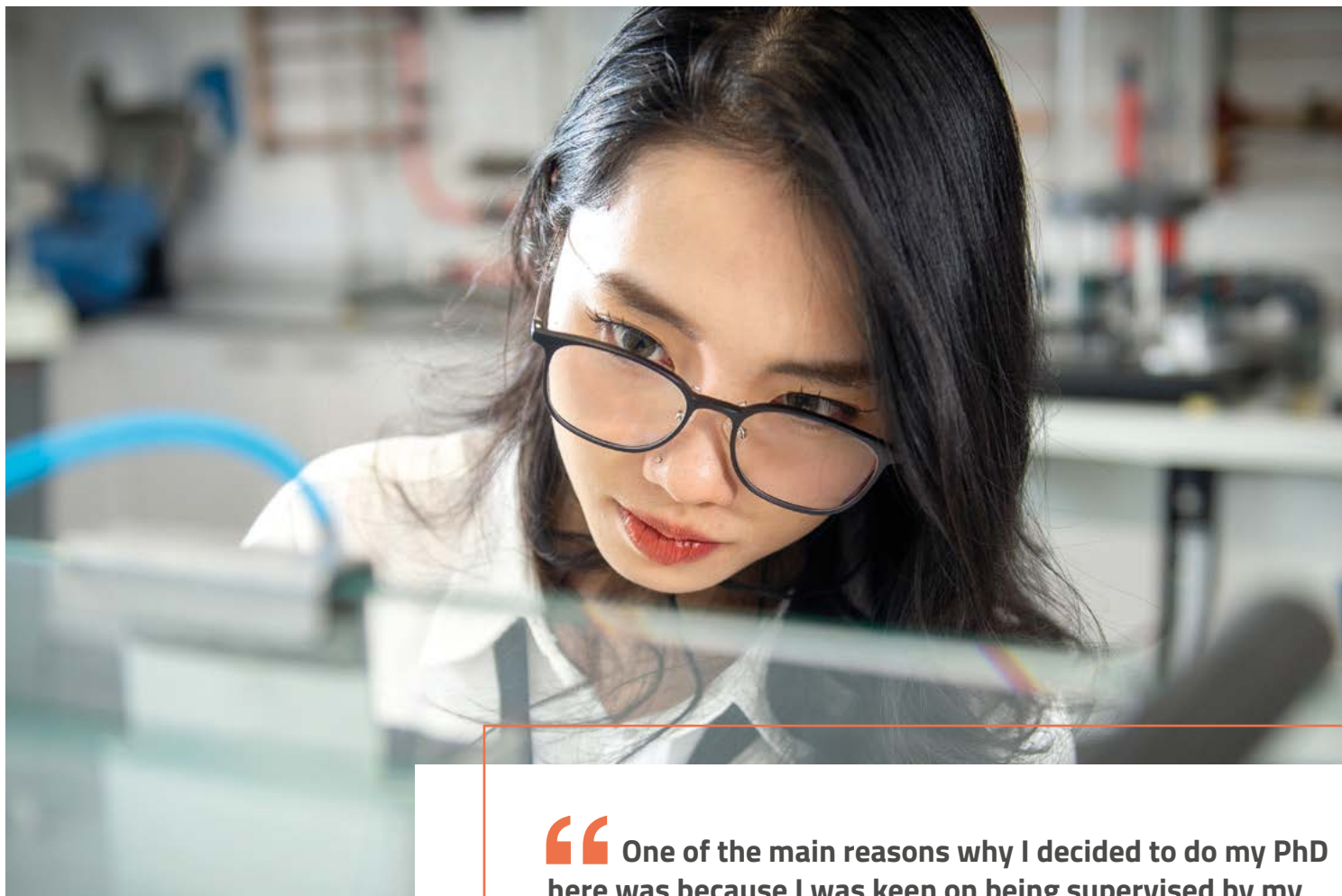
Our researchers aim to deliver outward-looking research that transforms communities.

Currently our researchers are:

- Developing biodegradable seaweed alternatives to chemical plastics
- Leading cyber security and systems engineering research including digital forensics, blockchain technology, optimised solutions, big data and robotics
- Creating United Nations resources to help cities around the world harness the benefits of digital technology
- Assessing natural ecosystems capable of capturing and storing carbon, leading to two conversation projects in Kenya



www.napier.ac.uk/research



“ One of the main reasons why I decided to do my PhD here was because I was keen on being supervised by my lecturers from my master’s programme (which was also at Edinburgh Napier) since their unfaltering support and guidance would really help me develop my research skills. So far, it has been a wonderful journey and I cannot thank my supervisory team and the University enough.

Pankhuri, India

Support

What support services are available at Edinburgh Napier University?

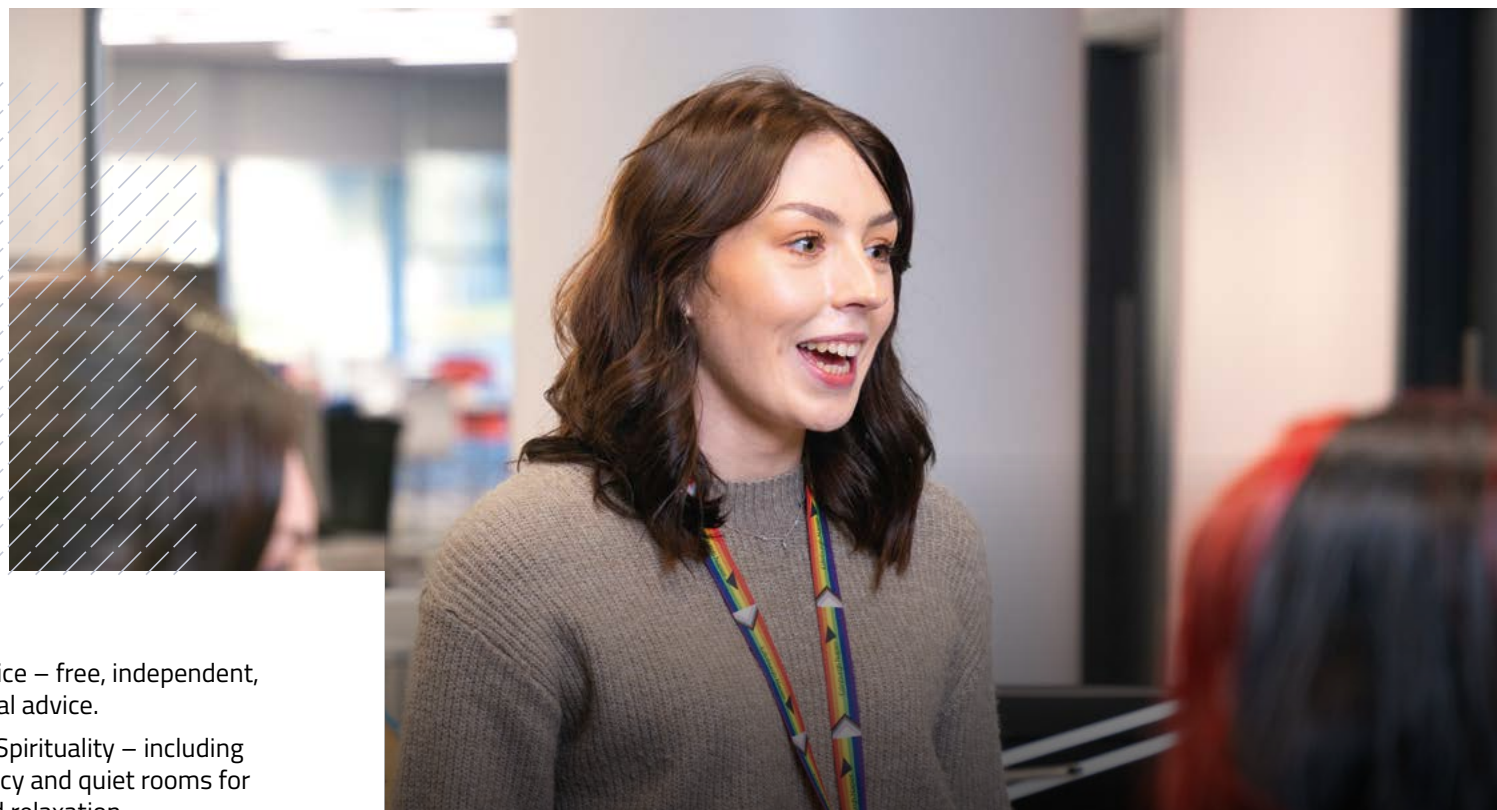
We're here to support you throughout your entire student journey, from initial research, admissions and visa applications to enrolment, counselling, advice and graduation.

This support includes:

- Your own personal development tutor (PDT) – your first point of contact for any academic or personal issues.
- Academic Skills – helping you develop the skills to succeed at university.
- English for Academic Purposes – English language support before and during your degree.
- Counselling and Mental Wellbeing – dedicated and qualified counsellors and mental health advisors.
- Employability & Careers – preparing you for successful careers through professional skills development.
- ENSA Advice – free, independent, confidential advice.
- Faith and Spirituality – including a Chaplaincy and quiet rooms for prayer and relaxation.
- Disability Inclusion – we welcome students of all ages, backgrounds and abilities, and support those with temporary or long-term health conditions, disabilities and additional needs.
- Visa & International Support – advice before and during your studies, including help with visas and immigration.



www.napier.ac.uk/support



“ It is very nice to have a personal tutor in my programme who I can go to with any concerns and questions. I was also surprised by the amount of resources that are available for students. The libraries and computer labs are fully equipped with up-to-date research material, software and programmes that we might need for any of our courses.

Jennifer, Canada



Applying

What are the entry requirements?

Entry requirements vary from course to course. You can find specific entry requirements for your country on our website:

www.napier.ac.uk/your-country

If your country is not listed, please contact us and we will be happy to share the specific requirements with you.

If English is not your first language you may also need to undertake an approved English language test. Find out more:

www.napier.ac.uk/english-language

How do I apply for undergraduate study?

All applications for our undergraduate courses are handled by the University and College Admissions Service (UCAS):

www.ucas.com

This is a central UK application system and you can apply for five different course choices in one application.

How do I apply for postgraduate study?

Applications for postgraduate study are made directly to the University using our online application system.

Apply online by choosing your course from our website. It is important to note that many of our postgraduate programmes have start dates in both September and January. The majority of our postgraduate courses do not have a strict application deadline. Some of our most popular programmes have limited places and you should aim to submit your applications as soon as possible after the course opens. You will be advised how to secure your place once we make you an offer.

Many of the postgraduate courses have an option to start in January. Are there advantages to this?

For a January start date you will generally study from January-April, then break for the summer. You'll study again from September-December and complete your degree from January-April the following year. There are several advantages to starting your programme in January, including being in Edinburgh over the summer to take advantage of the city's famous festivals. You'll also be able to use the summer to find valuable part-time or full-time work, work experience or an internship to boost your career. A handful of our postgraduate courses also start in June, which has similar advantages to beginning your course in January. Check your chosen programme on our website to find possible start dates.

Who can help me with my application?

Our International Team is here to help you all the way. However, we also have offices in China, India, Malaysia, Nigeria, Pakistan and the USA and a network of local representatives across the globe who can offer you advice and assistance on applying to study with us. You can find their details on our website:

www.napier.ac.uk/your-country

Edinburgh sounds great, but I would rather study online. Can I do that?

If you need the flexibility to study at any time, place and pace, many of our Global Online courses give you the opportunity to study for an internationally recognised Edinburgh Napier degree from home - wherever you are in the world.

Our online courses have been designed to help you achieve your career goals without compromising professional and personal commitments. You won't need a visa and many of the courses allow you to study at your own pace within the trimester.

You can find out everything you need to know about this option at

www.napier.ac.uk/online

English language

English is not my first language. Can you help me improve my English language skills before I join?

Yes. Our English for Academic Purposes pre-sessional courses support you to improve your English. We offer short (6-12 weeks) and long-term (8-12 months) English courses starting at different points in the year to help you to meet our English language requirements.

The course will include both online and on-campus teaching modes. It is designed to help you quickly adapt to student life in Edinburgh, become familiar with local culture, and settle in smoothly as a new student.

For students looking for a greater level of language support, our embedded on-campus international college provides three different pathways that progress onto a selection of Edinburgh Napier undergraduate and postgraduate degrees. For more information about this option, please see p. 22 or visit www.napier.ac.uk/internationalcollege

Is there any English language support available once I've joined the University?

We offer support right through your time with us, with English language and study skills workshops as well as individual appointments available free of charge to all enrolled international students. These include writing workshops, discussion and presentation skills workshops, individual help sessions and Language Cafes.

Visit www.napier.ac.uk/my-english-language for more information about our pre-sessional and in-sessional courses.



Visas

Do I need a visa to study at Edinburgh Napier University?

International students, including EU/EEA students but excluding Republic of Ireland students, looking to study with us in 2025/26 will need to have immigration permission.

What do I need to get a Student Visa?

Visa requirements typically include:

- an unconditional offer to a full-time bachelors, masters or research degree in the UK;
- a Confirmation of Acceptance for Studies (CAS) from the University confirming your offer, academic qualifications and English language level;
- total tuition fees and nine months of living costs held in your bank account for a 28-day period.

UK Visas and Immigration may update this information periodically so check our website for up-to-date requirements.



Can someone help me with my visa application?

Of course. Our trained immigration advisors sit in our Visa & International Support team and are happy to help you with all questions related to visas.

They can give you lots of advice about completing the Student Visa application before coming to the UK and also offer appointments and drop-in sessions while you are enrolled to assist you through your journey as a student.



www.napier.ac.uk/visas-immigration

Finances

How much does it cost to study at Edinburgh Napier?

At the time of going to press, we're still in the process of setting international fees for 2025/26. Please refer to our website where detailed tuition fee information will be made available as soon as possible:

www.napier.ac.uk/internationalfees

Note that tuition fees are subject to change and there may be an annual increment in the cost of tuition fees while you are at the University.

How do I pay my fees?

If you're paying your own fees you will pay your fees directly to the University. You will need to pay a deposit of around £6,000 (depending on the region you're from) to secure your place on the course. You may be able to pay your fees in instalments depending on your course and payment method.

If your fees are being paid by a sponsor, you can either pay these direct to the University or your sponsor can be invoiced for the cost of your tuition each year. For more information, visit our website.

Are there any scholarships available to reduce my costs?

We offer a variety of scholarships and discounts to help fund your studies. For information on these and how you can apply, head to the website:

www.napier.ac.uk/bursaries

How much does it cost to live in Edinburgh?

For UK student visas, the required monthly maintenance funds for living costs outside London are £1,136 per month (up to a maximum of 9 months). This amount is separate from tuition fees and applies to international students. UK Visas and Immigration will require you to show this in your Student Visa application.

In our experience, living costs in Edinburgh are similar or a bit higher than this amount, but students have great opportunities to receive discounts in shops, cinemas, theatres, museums and much more.

Will I be able to work during my studies?

Yes, getting a part-time job is a great way to keep the cost of living in Edinburgh down while studying.

There are lots of opportunities for part-time work in the city. The University runs a Student Ambassador programme which will allow you to become more involved in university life while making extra money. Within Edinburgh itself, there are opportunities for part-time work – retail, hospitality (restaurants, cafés and bars), tourism (hotels, tours and museums), cinemas, theatres, call centres and other office-based work. Our Employability & Careers team can help you work on your CV when you enrol at the University and will be able to assist you with looking for part-time work.

Remember, if you are studying with us on a visa, check the regulations for the maximum number of hours that you can work per week. For students at degree level or above this is up to 20 hours per week during term time.



MONTHLY BUDGET PLANNER*

Rent.....	£600-£1,200	Contents insurance.....	£15
Food.....	£200-£300	Social/hobbies.....	£200
Gas/electricity.....	£100-£200	Mobile phone.....	£25-£60
Internet (wifi)	£30-£40	TV Licence/ streaming services.....	£30-£40
Bus/tram pass.....	£54		

We estimate that you might spend £1,023 to £2,043 per month if you are a single student. The amount you spend largely depends on the type of accommodation you choose.

Check our full advice on our website: www.napier.ac.uk/cost-of-living







*estimated costs at time of print.

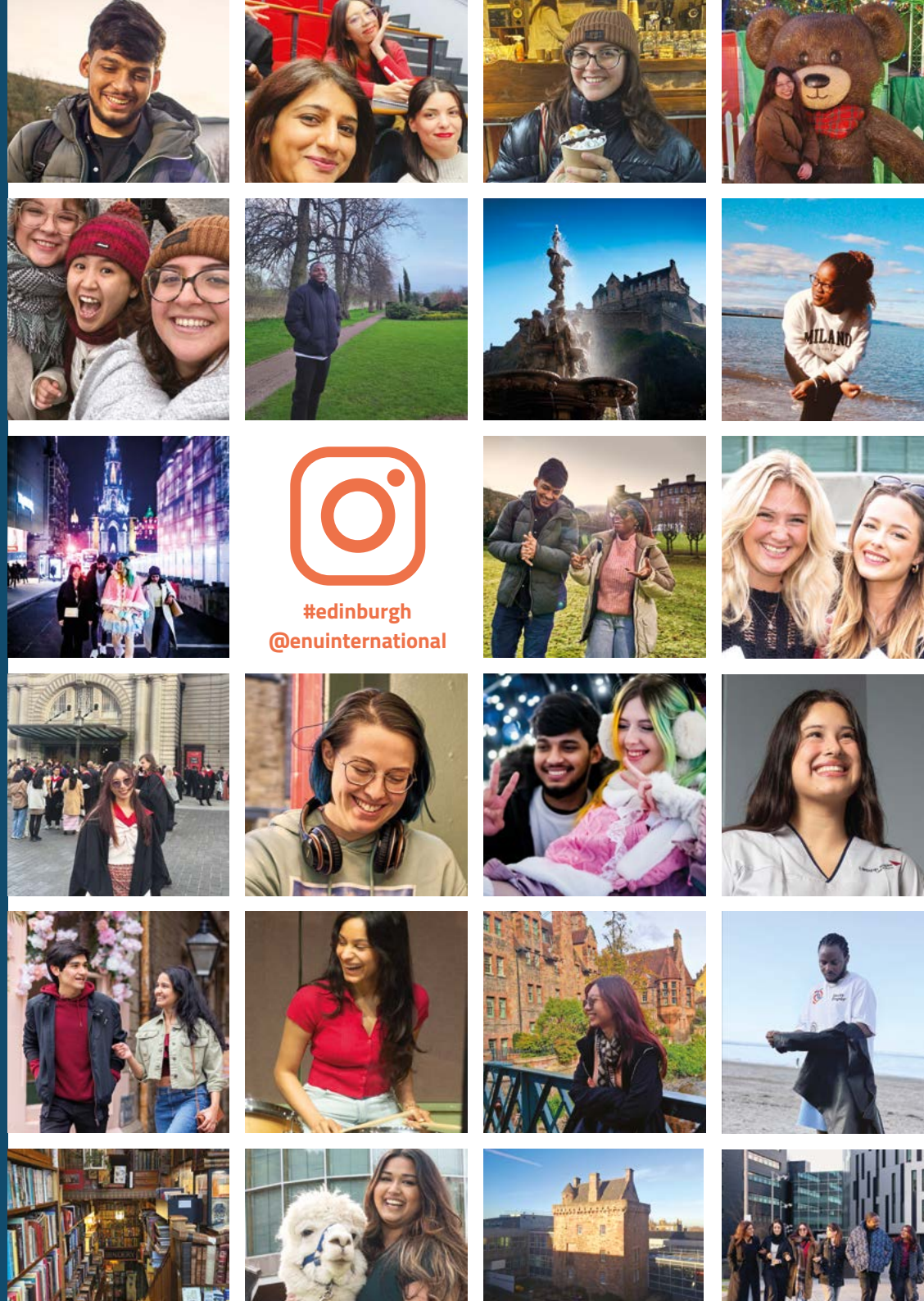
Ready, Set, Go!

Ahead of your arrival, we will send you a pre-arrival guide to help prepare you for your travel to Edinburgh and the university.

Look out for international student induction sessions in September and January to meet other students and learn more about making your university experience enjoyable and successful.

www.napier.ac.uk/international

 [@EdinburghNapierUniversity](#)
 [@EdinburghNapier](#)
 [@EdinburghNapier](#)
 [@Edinburgh-Napier-University](#)
 [@EdinburghNapier](#)
 [@EdinburghNapierUNI](#)



Contact us

We are here to offer you help with your student visa, assistance with your application or to discuss English language support. With overseas offices in China, India, Malaysia, Nigeria, Pakistan and the USA, local representatives, and our International Team travelling to a city near you, we are here to help you every step of the way, in person and online.



Online enquiries

www.napier.ac.uk/enquire



Ask a student:

www.napier.ac.uk/askourstudents

Call us: **+44 (0)333 900 6040**

Register your interest:
www.napier.ac.uk/international

All information correct at time of publication (August 2025). Please note that the University's website is the most up-to-date source of information regarding courses and facilities.

Edinburgh Napier is a registered Scottish charity.
Reg. no. SC018373.

**A university
journey you'll
remember.**

www.napier.ac.uk

