



Edinburgh Napier  
UNIVERSITY

# STEP *FORWARD*



Advance with  
a Masters.



# FOLLOW YOUR PASSION TODAY TO BECOME TOMORROW'S EXPERT.

Stepping into a postgraduate degree at Edinburgh Napier University is an opportunity to grow your skills and knowledge and go further in your field.

Expand your thinking with innovative courses, research-led teaching and industry experience to graduate with the confidence to succeed.

In this guide, you'll find information and links to get your application started. You'll also meet a student, academic and alum who'll share their postgraduate experience at Edinburgh Napier University.

Edinburgh Napier  
UNIVERSITY

## » Meet our people

**“Through my Masters, my critical thinking has improved enormously and now I feel more confident. Because of the confidence I have gained from my Masters programme, I feel like I am limitless and that I can do whatever I want to do now. ”**

**Adedoyin Ijiwole**  
MSc Healthcare  
Management, 2021



# » EXPAND YOUR OPPORTUNITIES

A postgraduate degree gives you more than just knowledge. We equip you with the tools to boost your academic skills and apply your expertise in your career.

## Academic skills support

If you're returning to study after a break, or just want to sharpen your skills, we offer workshops and one-to-one guidance to get you feeling confident and prepared for everything, from academic writing to planning for exams.

## Employer Engagement

Our Employer Engagement Team is dedicated to connecting the University with industry. Look out for regular employer presentations to keep you up-to-date with the latest opportunities

and see where your expertise can take you in your career.

## Bright Red Triangle

Bright Red Triangle is our hub for innovation and enterprise, providing advice, mentoring and facilities for you to explore, test and develop your business ideas. Whether you want to become an innovator or a freelancer, start your own company, or change the

**Find out more:**  
[napier.ac.uk/PGYourOpportunities](http://napier.ac.uk/PGYourOpportunities)

# » Meet our people

**“ The University has a great learning skills team, and you can book an appointment when it suits you to discuss things like referencing. It's really useful to brush up on these skills, especially if you've had a break from education.”**

**Emma-Leigh Quinn**  
MSW Social Work, 2021





## » Meet our people

**“ Postgraduate study is a new way to help yourself stand out a bit more. There are a whole host of options, modes of delivery, ways of doing it.**

**If you love learning and want to keep going, there’s something for you. ”**

**Dr Sarah Borthwick**  
Lecturer, The Business School



## » DETERMINE YOUR FUTURE

**Our experienced Career and Skills Development Team can help you to plan your future and progress your career. Here’s how we can help you to secure your perfect job.**

### **One-to-one guidance**

Book an appointment to speak to one of our dedicated Careers Development Consultants. You can talk about a specific opportunity or work with a coach to discuss how to achieve your career goals.

### **Application help**

Job applications can be daunting, but we’ve got you covered at every step. Our team can help you sharpen your CV, practise your interview skills, and prepare in our mock assessment centres.

### **Workshops and resources**

We run a variety of workshops to hone your CV and cover letters, share relevant career opportunities and build your professional skills. If you prefer, you can also access our advice online at any time.



# » HONE YOUR APPLICATION

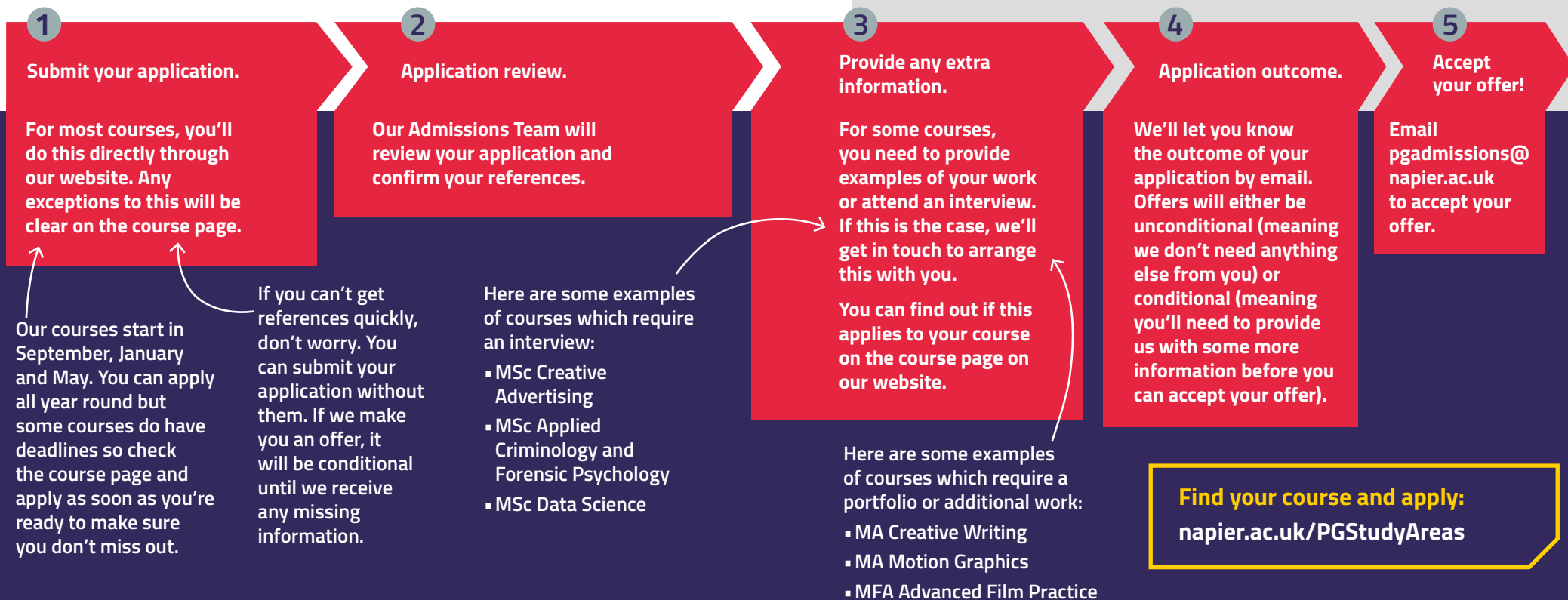
There are just a few steps to apply for your postgraduate course. We'll be on hand to support you all the way, starting with explaining how the process works and a few useful tips.

When you're ready to start, you can check the entry requirements and apply on the course webpage.

**“ At Masters level, you get the chance to take something that you had some interest in and really take it to the next level. ”**

**Dr Sarah Borthwick**

## Here's what you can expect:



## Before you apply:

Make sure you have these documents ready:

1. Your degree certificate with your final grade, or an academic transcript.
2. An academic reference, or an employer reference if you've been out of education for more than three years.
3. Your personal statement.

**Tip:** If you don't meet the standard entry criteria, don't be put off applying altogether. Many courses are willing to consider relevant work experience as well.

**Tip:** A good personal statement will show that you've researched the course and how it fits your experience and future plans. Make sure you keep it to one side of A4 paper!

# >> UNDERSTAND YOUR FINANCES

## How much will postgraduate study cost me?

Tuition fees for a full-time, one-year postgraduate course for a student from the UK start at £6,525\*. If you study part-time, you'll pay per module. The cost of a 20 credit module starts at £990.

Exact fee information is available on every course's webpage.

## How can I fund my studies?

To help with your tuition fees and living costs, you can apply for a loan. You'll need to apply to the funding body in the country you're from and they will assess how much you're eligible to borrow.

Some courses, including MSW Social Work, Masters in Nursing/Midwifery and Teaching qualifications, have different funding criteria. Each course page has the full information.

**Find out more:**  
[napier.ac.uk/PGFeesAndFunding](http://napier.ac.uk/PGFeesAndFunding)

Here are the different funding bodies you may apply to, with the maximum amount you'll be able to borrow from them:

SCOTLAND	
Student Awards Agency for Scotland (SAAS)	Up to £10,000
ENGLAND	
Student Finance England	Up to £10,609
WALES	
Student Finance Wales	Up to £13,000
NORTHERN IRELAND	
Student Finance NI	Up to £5,500

## How will I pay back the loan?

You'll pay your loan back as a percentage of your income once your salary is high enough. The threshold varies depending on the funding body you borrow from.

## Here are some of your options for financial advice and support during your studies:

### Payment plans

To help you manage the cost, you can set up a payment plan and pay your fees in instalments across the course of your studies.

### Childcare Fund

If you have children, you might be eligible for funding towards the cost of childcare to enable you to attend your course.

### Discounts

Edinburgh Napier Alumni get a 20% discount on tuition fees. Check our website for the full terms and conditions.

If you are paying your own tuition, and your fees are above £6,500 a year, you are eligible for a £500 discount if you pay the full amount 30 days before you matriculate.

Full-time students may be entitled to discounted/full council tax exemption dependent upon their circumstances.

### Discretionary Fund

If you find yourself in financial difficulty, the University has a fund you can apply to for help with living costs.

Distance learning bursary: A £500 bursary for any student on a UK distance learning postgraduate course.

### Recruitment support

Our Graduate Recruitment Team can help you to find the right job for your needs, whether that's work to support your studies or bolster your experience.

### Help and advice

Our Student Funding Team hold drop-in sessions every week at all three campuses, so you can talk through your options.

**Find out more:**  
[napier.ac.uk/PGFinanceSupport](http://napier.ac.uk/PGFinanceSupport)

**// Plan, plan and do even more planning. I would encourage everyone to get their finances and their employment sorted out before they start to allow the first few weeks at University to be about getting to know the course. //**  
**Emma-Leigh Quinn**

8 \* Fees are subject to change. Check [napier.ac.uk](http://napier.ac.uk) for the most up to date information.





# » DISCOVER OUR CAMPUSES

We're based across three unique campuses, putting us (and you) at the heart of Edinburgh. You'll usually be based at one campus, but you're free to use all of our campuses and facilities.

All our campuses have cafes, a library, and group and private study spaces. Email us to arrange a visit:

[studentrecruitment@napier.ac.uk](mailto:studentrecruitment@napier.ac.uk)

## Craiglockhart

This will be your campus if you'll be studying:

- Accounting & Finance
- Business & Management
- Marketing & Sales
- Tourism, Hospitality & Events

## Merchiston

This will be your campus if you'll be studying:

- Acting
- Building & Surveying
- Computing
- Design & Photography
- Engineering
- English & Publishing
- Film, Journalism & Media
- Music

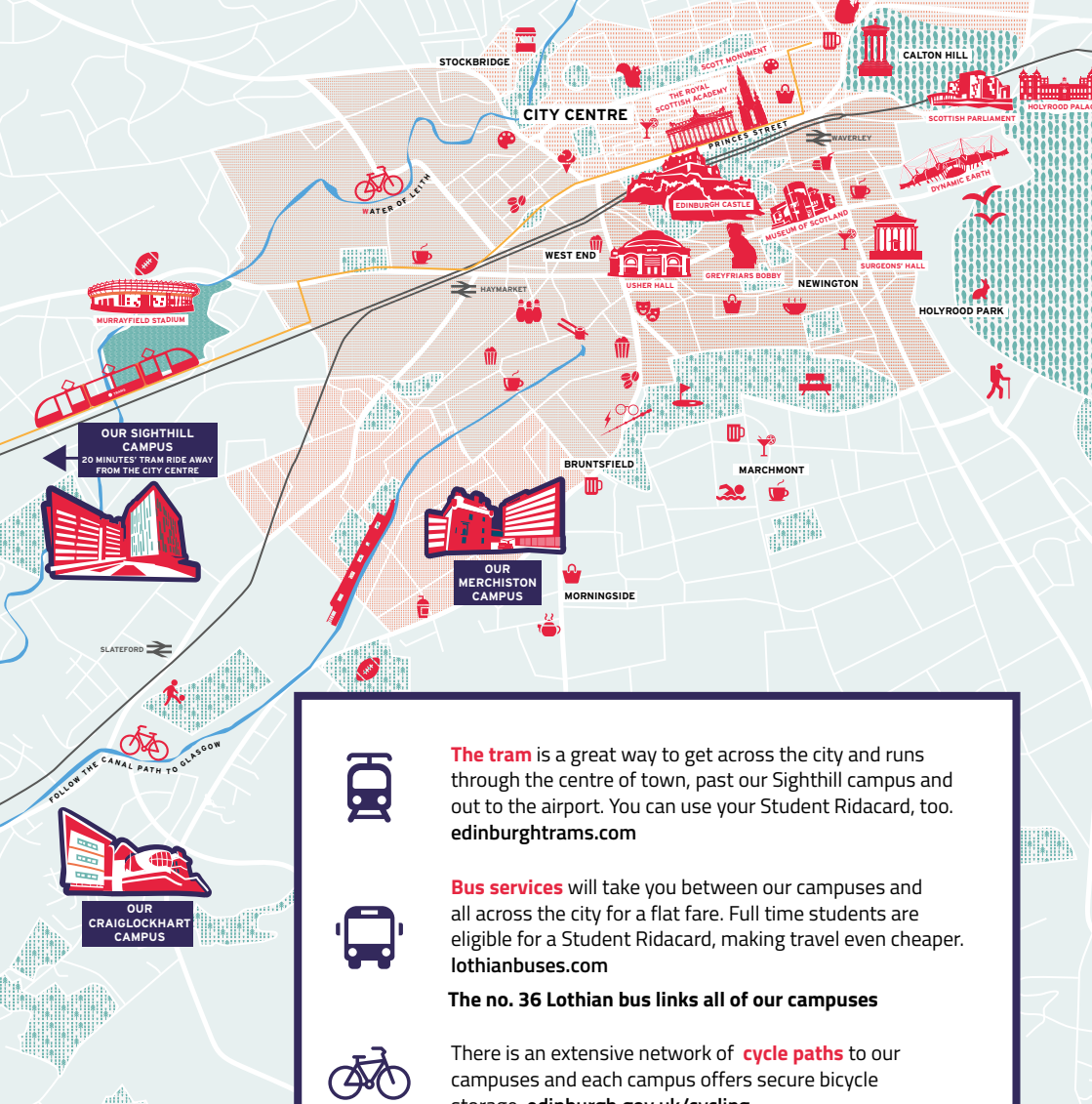
## Sighthill

This will be your campus if you'll be studying:

- Biosciences
- Criminology, Psychology & Sociology
- Health & Social Care
- Nursing & Midwifery
- Sport & Exercise Sciences
- Teaching







The **tram** is a great way to get across the city and runs through the centre of town, past our Sighthill campus and out to the airport. You can use your Student Ridacard, too. [edinburghtrams.com](http://edinburghtrams.com)



**Bus services** will take you between our campuses and all across the city for a flat fare. Full time students are eligible for a Student Ridacard, making travel even cheaper. [lothianbuses.com](http://lothianbuses.com)

**The no. 36 Lothian bus links all of our campuses**



There is an extensive network of **cycle paths** to our campuses and each campus offers secure bicycle storage. [edinburgh.gov.uk/cycling](http://edinburgh.gov.uk/cycling)



The **airport** is situated west of the city centre and offers flights to more than 150 destinations across four continents. [edinburghairport.com](http://edinburghairport.com)



Waverley and Haymarket **train** stations offer access to the whole of the UK and on to Europe. [networkrail.co.uk](http://networkrail.co.uk)



Edinburgh is so compact that it's easy to get around on foot!

Edinburgh Napier University is a registered Scottish charity. Registration Number SC018373

## » EXPLORE YOUR OPTIONS

Join one of our postgraduate events to hear more about making your application, funding your studies, and to chat to academics about what you'll be learning.

**Register here for the latest opportunities:**  
[napier.ac.uk/PGMeetUs](http://napier.ac.uk/PGMeetUs)

**"I attended an open day, spoke to the tutors who ran the course and had a little look round. I was able to see that this is a world-class institution and it made my decision so much easier."**

**Ross Bunyan**  
MSc Biomedical Science, 2017







**GET  
READY  
TO TAKE  
ON THE  
WORLD.**

**[napier.ac.uk/postgraduate](https://napier.ac.uk/postgraduate)**

