



Edinburgh Napier
UNIVERSITY

STEP *FORWARD*



Advance with
a Masters.



FOLLOW YOUR PASSION AND ADVANCE WITH A MASTERS.

A postgraduate degree from Edinburgh Napier gives you so much more than a degree.

Our innovative courses and industry-led teaching mean you'll graduate with the skills, experience and network to build the future you want in the field you care about most.

In this guide, you'll find the information and links you need to get started towards making your Masters happen. We're here to help you take your next step forward.

Edinburgh Napier
UNIVERSITY

» Meet our people

“Through my Masters, my critical thinking has improved enormously and now I feel more confident. Because of the confidence I have gained from my Masters programme, I feel like I am limitless and that I can do whatever I want to do now.”

Adedoyin Ijiwole
MSc Healthcare
Management



» GROW YOUR OPPORTUNITIES

We're here to help your plans for the future take shape. There's support available at each step, from getting up to speed with studying at postgraduate level, to introductions into the industry you want to work in.

Academic skills support

If you're returning to study after a break, or just want to sharpen your skills, we offer workshops and one-to-one guidance to get you feeling confident and prepared for everything, from academic writing to planning for exams.

Employer Engagement

Our Employer Engagement Team is dedicated to connecting the University with a wide range of industries. Look out for regular employer presentations to keep you up-to-date with the latest

opportunities and see where your expertise can take you in your career.

Bright Red Triangle

Bright Red Triangle is our hub for innovation and enterprise, providing advice, mentoring and facilities for you to explore, test and develop your business ideas. Whether you want to become an innovator or a freelancer, start your own company, or change the world for the better, Bright Red Triangle is the community for you.

Find out more: brightredtriangle.co.uk

Find out more:

www.napier.ac.uk/PGYourOpportunities



» Meet our people

“ My Masters at Edinburgh Napier was a really good stepping point into my career because it allowed me to really focus on finding the things that I enjoy doing, it also allowed me to learn about stuff that I don't. I had some really good lecturers and advisers, specifically for my dissertation. She was amazing, we still talk to this day.”

Jordan Barnhart
MSc Creative Advertising



» Meet our people

“ At Edinburgh Napier, I got the confidence to take that chance on my future and I now work for myself. It’s a big commitment, but once you do it and start your studies, you just have to put the effort in. Give it a try, it’s worth it. ”

Ricky Callaghan
MSc Computing (User Experience)



» BUILD YOUR FUTURE

Our experienced Career and Skills Development Team can help you to plan your future and progress your career. Here’s how we can help you to secure your perfect job.

One-to-one guidance

Book an appointment to speak to one of our dedicated Careers Development Consultants. You can talk about a specific opportunity or work with a coach to discuss how to achieve your career goals.

Application help

Job applications can be daunting, but we’ve got you covered at every step. Our team can help you sharpen your CV, practise your interview skills, and prepare in our mock assessment centres.

Workshops and resources

We run a variety of workshops to hone your CV and cover letters, share relevant career opportunities and build your professional skills. If you prefer, you can also access our advice online at any time.



» HONE YOUR APPLICATION

There are just a few steps to apply for your postgraduate course. We'll be on hand to support you all the way, starting with explaining how the process works and a few useful tips.

When you're ready to start, you can check the entry requirements and apply on the course webpage.

Tip: If you don't meet the standard entry criteria, don't be put off applying altogether. Many courses are willing to consider relevant work experience as well.

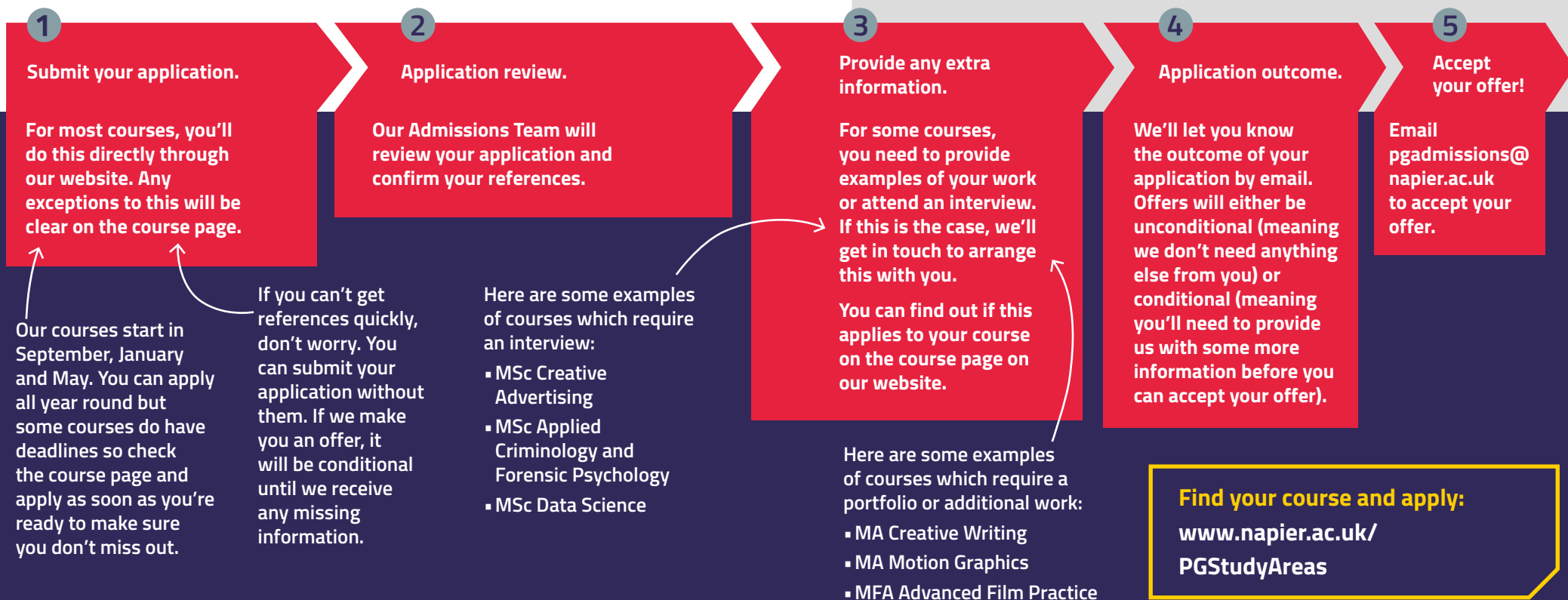
Before you apply:

Make sure you have these documents ready:

- | | | |
|--|---|-----------------------------|
| 1. Your degree certificate with your final grade, or an academic transcript. | 2. An academic reference, or an employer reference if you've been out of education for more than three years. | 3. Your personal statement. |
|--|---|-----------------------------|

Tip: A good personal statement will show that you've researched the course and how it fits your experience and future plans. Make sure you keep it to one side of A4 paper!

Here's what you can expect:



>> UNDERSTAND YOUR FINANCES

How much will postgraduate study cost me?

Tuition fees for a full-time, one-year postgraduate course for a student from the UK start at £6,720*.

Exact fee information is available on every course's webpage. For any specific information regarding fees, you can contact fees@napier.ac.uk

How can I fund my studies?

To help with your tuition fees and living costs, you can apply for a loan. You'll need to apply to the funding body in the country you're from and they will assess how much you're eligible to borrow.

Some courses, including MSW Social Work, Masters in Nursing/Midwifery and Teaching qualifications, have different funding criteria. Each course page has the full information.

Find out more:

www.napier.ac.uk/PGFeesAndFunding

Here are the different funding bodies you may apply to, with the maximum amount you'll be able to borrow from them:

SCOTLAND	
Student Awards Agency for Scotland (SAAS)	Up to £10,000
ENGLAND	
Student Finance England	Up to £11,222
WALES	
Student Finance Wales	Up to £17,430
NORTHERN IRELAND	
Student Finance NI	Up to £5,500

How will I pay back the loan?

You'll pay your loan back as a percentage of your income once your salary is high enough. The threshold varies depending on the funding body you borrow from.

Here are some of your options for financial advice and support during your studies:

Payment plans

To help you manage the cost, you can set up a payment plan and pay your fees in instalments across the course of your studies.

Childcare Fund

If you have children, you might be eligible for funding towards the cost of childcare to enable you to attend your course.

Discounts

Edinburgh Napier Alumni get a 20% discount on tuition fees. Check our website for the full terms and conditions.

If you are paying your own tuition, and your fees are above £6,500 a year, you are eligible for a £500 discount if you pay the full amount 30 days before you matriculate.

Full-time students may be entitled to discounted/full council tax exemption dependent upon their circumstances.

Discretionary Fund

If you find yourself in financial difficulty, the University has a fund you can apply to for help with living costs.

Distance learning bursary

A £500 bursary for any student on a UK distance learning postgraduate course.

Recruitment support

Our Graduate Recruitment Team can help you to find the right job for your needs, whether that's work to support your studies or bolster your experience.

Help and advice

Our Student Funding Team hold drop-in sessions every week at all three campuses, so you can talk through your options.

Find out more:

www.napier.ac.uk/PGFinanceSupport





» DISCOVER OUR CAMPUSES

We're based across three unique campuses, putting us (and you) at the heart of Edinburgh. You'll usually be based at one campus, but you're free to use all of our campuses and facilities.

All of our campuses feature an impressive library, a cafe and a range of private and group study spaces to make use of during your studies.

Email us to arrange a visit:

studentrecruitment@napier.ac.uk

Craiglockhart

This will be your campus if you'll be studying:

- Accounting & Finance
- Business & Management
- Marketing & Sales
- Tourism, Hospitality & Events

Merchiston

This will be your campus if you'll be studying:

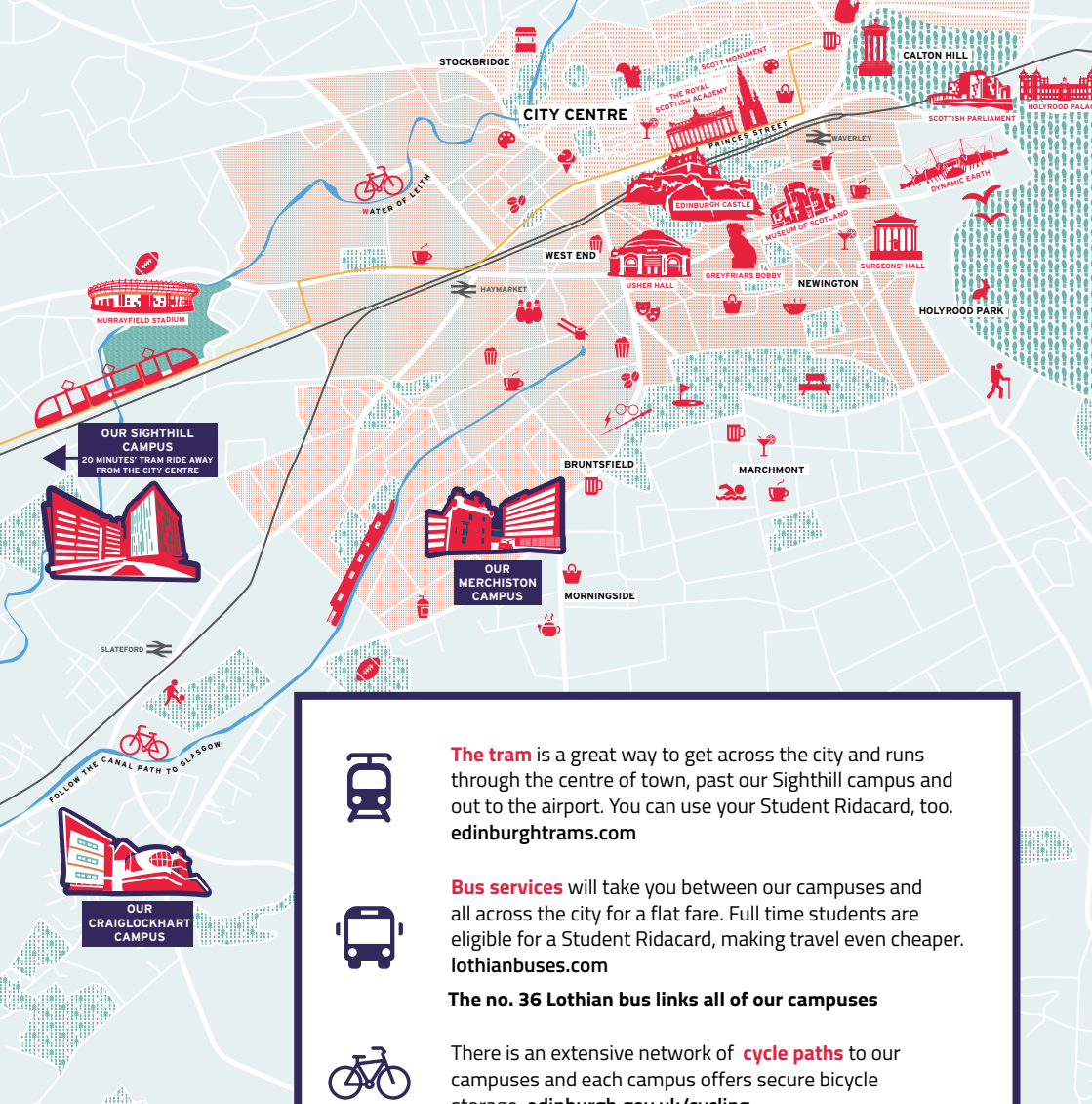
- | | |
|---|--|
| <ul style="list-style-type: none"> ▪ Acting ▪ Building & Surveying ▪ Computing | <ul style="list-style-type: none"> ▪ Design & Photography ▪ Engineering ▪ English & Publishing ▪ Film, Journalism & Media ▪ Music |
|---|--|

Sighthill

This will be your campus if you'll be studying:

- Biosciences
- Criminology, Psychology & Sociology
- Health & Social Care
- Nursing & Midwifery
- Sport & Exercise Sciences
- Teaching





The **tram** is a great way to get across the city and runs through the centre of town, past our Sighthill campus and out to the airport. You can use your Student Ridacard, too. edinburghtrams.com



Bus services will take you between our campuses and all across the city for a flat fare. Full time students are eligible for a Student Ridacard, making travel even cheaper. lothianbuses.com

The no. 36 Lothian bus links all of our campuses



There is an extensive network of **cycle paths** to our campuses and each campus offers secure bicycle storage. edinburgh.gov.uk/cycling



The **airport** is situated west of the city centre and offers flights to more than 150 destinations across four continents. edinburghairport.com



Waverley and Haymarket **train** stations offer access to the whole of the UK and on to Europe. networkrail.co.uk



Edinburgh is so compact that it's easy to get around on foot!

Edinburgh Napier University is a registered Scottish charity. Registration Number SC018373

» EXPLORE YOUR OPTIONS

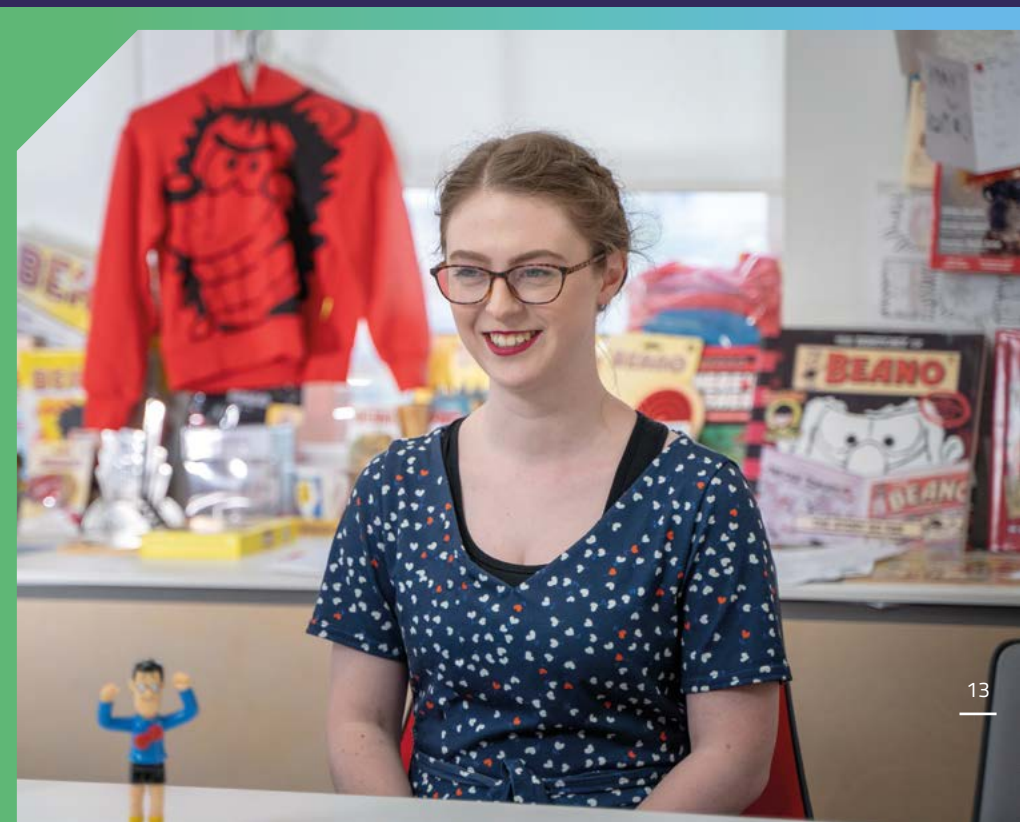
Join one of our postgraduate events to hear more about making your application, funding your studies, and to chat to academics about what you'll be learning.

Register here for the latest opportunities:

www.napier.ac.uk/PGMeetUs

"I attended an open day, spoke to the tutors who ran the course and had a little look round. I was able to see that this is a world-class institution and it made my decision so much easier."

Ross Bunyan
MSc Biomedical Science, 2017





**GET
READY
TO TAKE
ON THE
WORLD.**

www.napier.ac.uk/postgraduate

