

# Edinburgh

## Getting around our campuses and city



**Bus services** will take you all across the city and for a flat fare. Full time students are eligible for a Student Ridacard, making travel even cheaper. [www.lothianbuses.com](http://www.lothianbuses.com)



There is an extensive network of **cycle paths** to our campuses and each campus offers secure bicycle storage. [www.edinburgh.gov.uk/cycling](http://www.edinburgh.gov.uk/cycling)



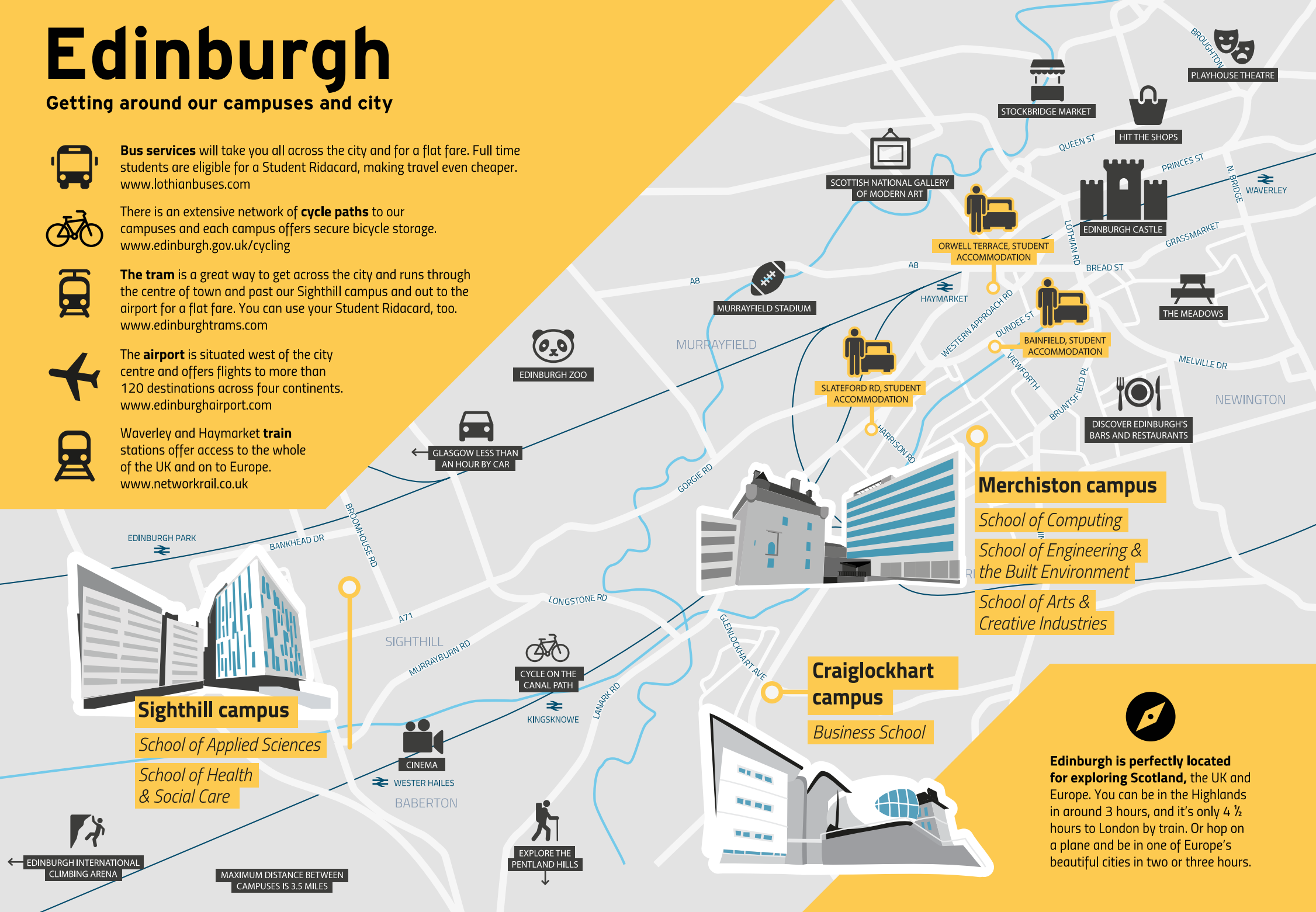
**The tram** is a great way to get across the city and runs through the centre of town and past our Sighthill campus and out to the airport for a flat fare. You can use your Student Ridacard, too. [www.edinburghtrams.com](http://www.edinburghtrams.com)



The **airport** is situated west of the city centre and offers flights to more than 120 destinations across four continents. [www.edinburghairport.com](http://www.edinburghairport.com)



Waverley and Haymarket **train** stations offer access to the whole of the UK and on to Europe. [www.networkrail.co.uk](http://www.networkrail.co.uk)



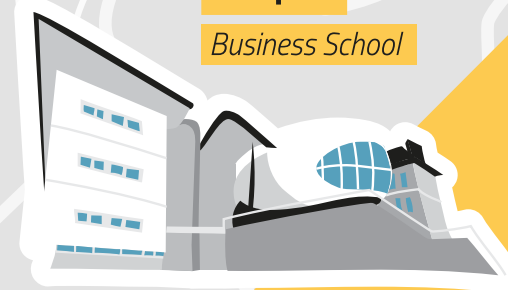
### Sighthill campus

School of Applied Sciences  
School of Health & Social Care



### Merchiston campus

School of Computing  
School of Engineering & the Built Environment  
School of Arts & Creative Industries



### Craiglockhart campus

Business School



**Edinburgh is perfectly located for exploring Scotland**, the UK and Europe. You can be in the Highlands in around 3 hours, and it's only 4 ½ hours to London by train. Or hop on a plane and be in one of Europe's beautiful cities in two or three hours.

← EDINBURGH INTERNATIONAL CLIMBING ARENA

MAXIMUM DISTANCE BETWEEN CAMPUSES IS 3.5 MILES

EXPLORE THE PENTLAND HILLS

← GLASGOW LESS THAN AN HOUR BY CAR